



Originally published as:

Grünthal, G., Wahlström, R. (2012): The European-Mediterranean Earthquake Catalogue (EMEC) for the last millennium. - *Journal of Seismology*, 16, 3, 535-570

DOI: <http://doi.org/10.1007/s10950-012-9302-y>

The European-Mediterranean Earthquake Catalogue (EMEC) for the last millennium

Gottfried Grünthal & Rutger Wahlström

Received: 10 October 2011 / Accepted: 20 March 2012 / Published online: 28 April 2012

Abstract The catalogue by Grünthal *et al.* (J Seismol 13:517–541, 2009a) of earthquakes in central, northern, and north-western Europe with $M_w \geq 3.5$ (CENEC) has been expanded to cover also southern Europe and the Mediterranean area. It has also been extended in time (1000–2006). Due to the strongly increased seismicity in the new area, the threshold for events south of the latitude 44°N has here been set at $M_w \geq 4.0$, keeping the lower threshold in the northern catalogue part. This part has been updated with data from new and revised national and regional catalogues. The new Euro-Mediterranean Earthquake Catalogue (EMEC) is based on data from some 80 domestic catalogues and data files and over 100 special studies. Available original M_w and M_0 data have been introduced. The analysis largely followed the lines of the Grünthal *et al.* (J Seismol 13:517–541, 2009a) study, i.e., fake and duplicate events were identified and removed, polygons were specified within each of which one or more of the catalogues or data files have validity, and existing magnitudes and intensities were converted to M_w . Algorithms to compute M_w are based on relations provided locally, or more commonly on those derived by Grünthal *et al.* (J Seismol 13:517–541, 2009a) or in the present study. The homogeneity of EMEC with respect to M_w for the different constituents was investigated and improved where feasible. EMEC contains entries of some 45,000 earthquakes. For each event, the date, time, location (including

focal depth if available), intensity I_0 (if given in the original catalogue), magnitude M_w (with uncertainty when given), and source (catalogue or special study) are presented. Besides the main EMEC catalogue, large events before year 1000 in the SE part of the investigated area and fake events, respectively, are given in separate lists.

Keywords Earthquake catalogue • European Mediterranean region • Unified moment magnitude

1 Introduction

A homogeneous earthquake catalogue with harmonized moment magnitude data with sufficiently low thresholds covering the European-Mediterranean area and long historical time spans up to recent times has been lacking so far. The earthquake catalogue presented here fills this gap. It covers the western part of the Eurasian plate with the seismically highly active plate boundaries, including the Mid-Atlantic ridge down to the Azores, extends in the south to Africa north of the Sahara, in the north to the Arctic Sea, and in the east to the Levant, eastern Turkey, and the Caucasus. This areal coverage gave the name to the catalogue: EMEC - The European-Mediterranean Earthquake Catalogue.

EMEC represents the spatial and temporal extension of CENEC, the unified catalogue of earthquakes in central, northern, and north-western Europe with a threshold of $M_w = 3.5$ (Grünthal *et al.* 2009a, denoted *GWS09* below), which in turn was an improvement, and expansion in time and space, of the Grünthal and Wahlström (2003) catalogue. While CENEC has a southern and western extension to 44°N and 25°W, EMEC goes far beyond these spatial limitations. Temporally CENEC covers about one millennium, i.e., from AD 1000 up to 2004, although for some regions, notably and obviously

G. Grünthal (✉) • R. Wahlström
Helmholtz Centre Potsdam, GFZ German Research Centre for
Geosciences, Section “Seismic Hazard and Stress Field”,
Telegrafenberg,
14473 Potsdam, Germany
e-mail: ggrue@gfz-potsdam.de

R. Wahlström
e-mail: rutger@gfz-potsdam.de

the Atlantic Ocean, the time period of data is significantly shorter. EMEC starts generally also in AD 1000 and extends up to 2006. In certain parts of the central and eastern Mediterranean region, the data allow a start earlier than 1000. Thus earthquakes in the studied area in the years 300-999, located south of latitude 40°N and east of 10°E , and with magnitude $M_w \geq 6.0$, are included in a special file. For several of the domestic catalogues used in CENEC, we could make use of their new versions.

As a suitable magnitude threshold, $M_w = 4.0$ has been chosen for the new area, considering the generally much higher seismic activity. Still a few catalogues and special studies have thresholds above 4. The threshold for the northern part, latitude 44°N and above, remains $M_w = 3.5$ as in *GWS09*. Difficulties in the catalogue preparation began already in accessing several of the catalogues. The conversion of the different strength types in the many catalogues and special studies to M_w was challenging. Special studies denote specific publications with respect to a particular or several earthquakes and usually contain more precise data than the catalogues show. The conversions to M_w were based on local relations or on regressions developed by *GWS09* or in the present study. Although all the area, i.e., the part covered by CENEC and the new extended part, is investigated in a similar way, the description of the analysis is given in more detail for the new, southern part.

As in the previous study, all original data from the different sources were incorporated into a database, including not only tectonic earthquakes but also induced events, explosions, and suspected other non-seismic events of different kinds. A more elaborate technique than described by *Grünthal and Wahlström* (2003) has been applied for the event type discrimination and is described in Chapter 6. The EMEC catalogue is an excerpt from the database of tectonic earthquakes starting in year 1000 or in a limited area even earlier, located within the polygons covering the described area (Chapter 2), and with M_w magnitudes above the specified respective thresholds. If more than one catalogue lists an event, a priority algorithm, described in Chapter 2, decides which entry has been selected for EMEC. EMEC contains about 45,000 earthquakes.

The efforts to generate a homogeneous earthquake catalogue have been concentrated on the harmonization of magnitudes, since no uniform reference system exists for this parameter. There are not only different types of magnitudes, but moreover quite different approaches how, e.g., M_L was/is determined throughout the Euro-Med region, countries or agencies. The other parameters to describe an earthquake are date/time, epicentral location, and depth. Differences in the entries from the Julian and

the Gregorian calendars have been carefully observed to avoid duplications. So have different local times used by different sources in some cases. However, the time of the preferred entry has been kept. The precision of timing is decreasing towards historical periods. The exact timing of a millennium of data is not of utmost importance in seismicity studies. An extensive search for fake events includes, besides identifying non-seismic events, corrections of time and location where needed. Besides this, the harmonization is focussed on magnitudes (M_w). A special chapter is dedicated to the uncertainty of parameters.

The completeness of events is homogeneous for certain time periods only. The completeness is not only depending on the magnitude but also substantially vary from region to region. Although the completeness analysis is not part of earthquake cataloguing this issue is attended to in Section 10.

EMEC and its earlier versions have already been the basis for a number of European or regional research projects. To these belong (1) the probabilistic assessment of the tsunami hazard for the coastal regions of the Mediterranean (*Sørensen et al.* 2012) as part of the European project TRANSFER, (2) the probabilistic seismic hazard assessments (PSHA) for Europe in the frame of the project NERIES as a new hybrid zoneless approach (*Chan and Grünthal* 2010), (3) the time-independent and the long-term time-dependent PSHA for the Levant (*Grünthal et al.* 2009c), and (4) the generation of a preliminary European earthquake model for the public private partnership project GEM (*Grünthal et al.* 2010). A version of EMEC representing an earlier processing status has been made available for the European PSHA project SHARE, namely 18,996 events in the time period 1900-2006, representing $> 78\%$ of the total number of events used for this project (cf. Chapter 3.2).

2 The catalogues, special studies, and polygons

Most European countries started compiling their own national electronic earthquake bulletins in the late 1970s and early 1980s, when appropriate computer techniques became available. They were often supplied as printed earthquake lists and/or computer files, and were and are subject to regular or sporadic updates. The some 80 catalogues contributing data to EMEC, as well as the ISC/ISS (below referred to as ISC only) and NEIC bulletins used mostly for part of the Atlantic Ocean, are listed in Table 1. The characteristics of the contributing catalogues are described below.

Special studies on individual earthquakes, earthquake sequences or the seismic activity in more lim-

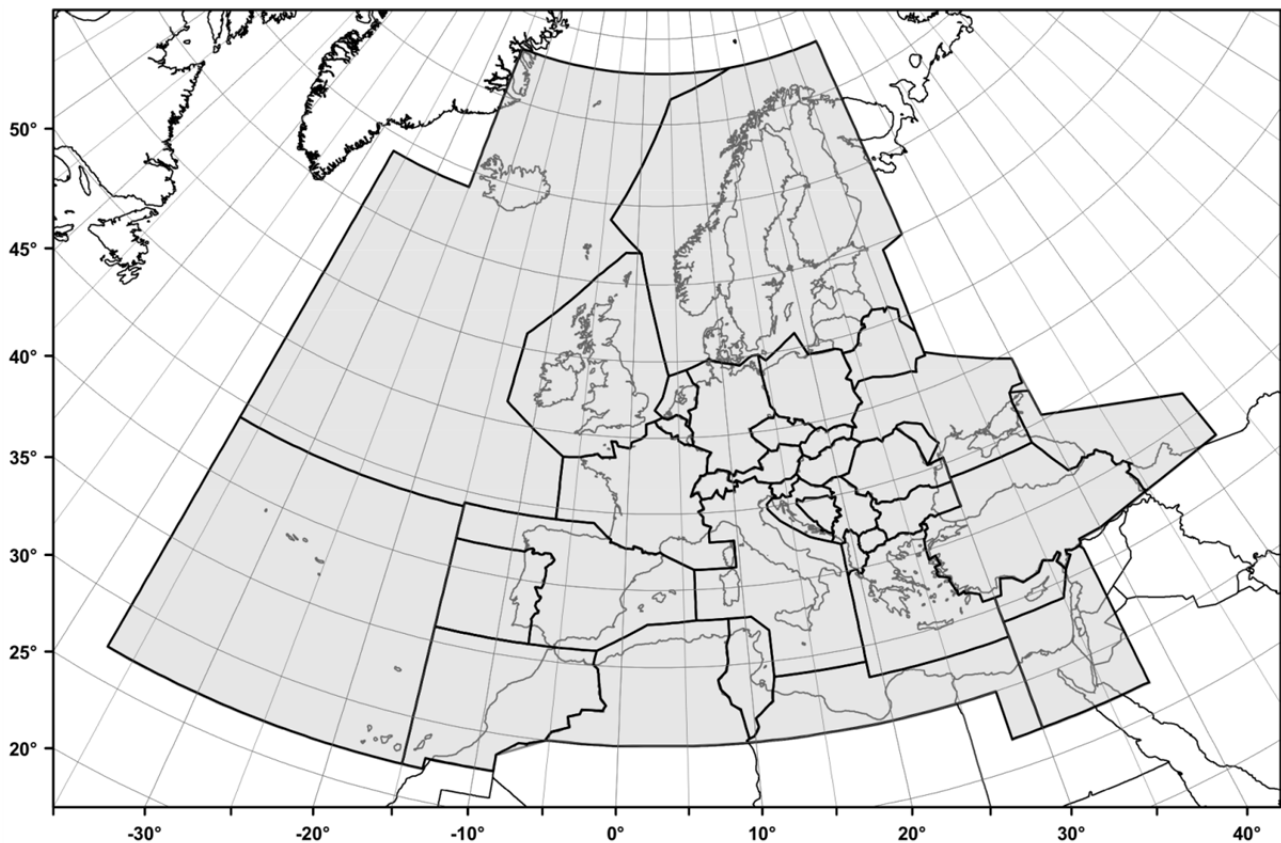


Figure 1. The polygons used for the generation of EMEC. Within each polygon, a certain hierarchy of local catalogues is valid. For details, we refer to the text.

ited geographical areas and time spans give improved and sometimes extended information. The special studies are listed in Table 2.

The investigated area was subdivided into 37 polygons (Table 3; Fig. 1). These are geographical regions which often follow national borders within which respective domestic catalogues have a priority position. Compared to the *GWS09* study, five polygons, which were cut at 44°N latitude, Bosnia/Herzegovina, Croatia, France, Italy, and Serbia/Montenegro, were now extended to cover larger areas. The North Atlantic and Iceland polygon has been extended westward to encompass all the ridge.

Each catalogue has validity in one or more polygons (see Table 1). In each polygon, data from one or more of the catalogues are allowed according to a hierarchy schedule, which can differ for different time periods depending on the span and reliability of the data sets (Table 3). There are many entries in the data file which do not qualify for the catalogue due to the criteria specified in Table 3. Almost all such entries are duplicated by those in allowed catalogues or in special studies. The latter usually have priority over the catalogues.

Exceptions from the catalogue-polygon assignments have been made for events near polygon borders, notably where an entry of catalogue C1 valid in

polygon P1 occurs in polygon P2, whereas an entry for the same event of catalogue C2 valid in polygon P2 occurs in polygon P1. In this case, one of the entries C1 or C2 is allowed. The most notable of these cases is described in Table 3.

In the search for duplicates, special attention was paid to (1) events with entries in more than one polygon, (2) differences between universal and local time (up to several hours), and (3) differences between the Julian and the Gregorian calendars (10 to 12 days) for historical earthquakes. Other data cleaning tasks were performed similarly to *Grünthal and Wahlström* (2003) and *GWS09*.

For several applications of the catalogue, it may be useful to consider also significant earthquakes before the principal starting year of EMEC. These are especially earthquakes within the highest magnitude classes of certain regions. We consider here events before year 1000 in the Aegean region, Cyprus, Sicily, and the Levant.

3 The southern extension of the CENEC area

The EMEC catalogue is, as its forerunners, consistently based on unified M_w magnitudes. Where M_w data are not given in the catalogues, they had to be

derived. Irrespective of the magnitude threshold of any individual catalogue, $M_w = 4.0$ is the lower cut-off for events appearing in the southern part of EMEC, i.e., at latitudes south of 44°N .

3.1 Catalogues based entirely on moment tensor solutions

The backbone for the M_w harmonization are two European data sets based entirely on moment tensor solutions – here called the original M_w . These are the European-Mediterranean Regional Centroid Moment Tensor Solutions (RCMTS) by *Pondrelli et al.* (2002, 2004, 2007, 2011) from 1997 and on, and the Swiss Moment Tensor Solutions (SMTS) from 1999 and on. These M_w magnitudes have highest priority for the most modern part of EMEC (since 1997) and are the basis for harmonization checks. They have been combined with the other parameters of the catalogue. SMTS rank before RCMTS. The two data sets are fully compatible as illustrated in Fig. 2. Harvard Central Moment Tensor Solutions (HCMTS) provide M_w magnitudes to many ISC bulletins events and are therefore introduced for the Mid-Atlantic ridge. HCMTS are also congruent with RCMTS and SMTS data.

3.2 National and regional catalogues in terms of M_w

Several of the national and regional catalogues give M_w magnitudes for all events, namely (countrywise

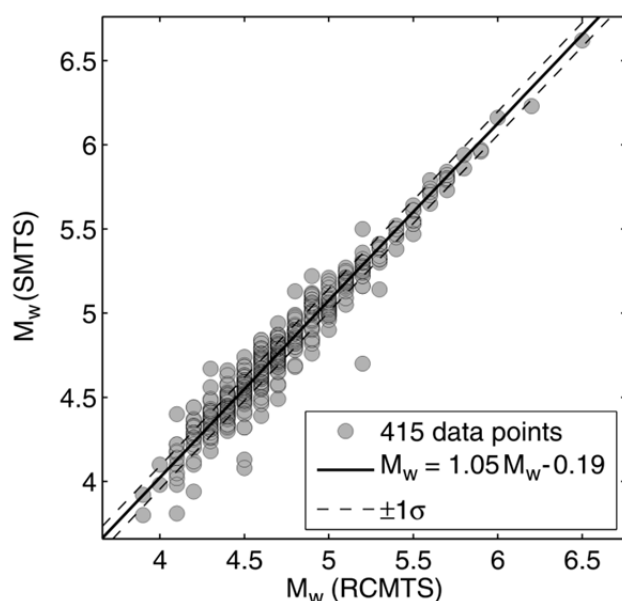


Figure 2. Comparison of M_w of the Swiss Moment Tensor Solutions (SMTS) with M_w from the European-Mediterranean Regional Centroid Moment Tensor Solutions (RCMTS) by *Pondrelli et al.* (2002, 2004, 2007, 2011).

alphabetically following Table 1) *Hamdache et al.* (2010) for Algeria, *Papaioannou* (2001) for the eastern Mediterranean area, *Papazachos et al.* (2003, 2009) and *Roumelioti et al.* (2010, 2011) for Greece, *Martínez Solares* (2003) and *Stich et al.* (2010) for Iberia, *CPTI Working Group* (2004, 2008) for Italy, *Peláez et al.* (2007) for Morocco, *Oncescu et al.* (1999) and *INFP* (2009) for Romania, *Turkish GSHAP catalogue* (2000), *Ambraseys* (2002), and *Kalafat et al.* (2009, 2010) for Turkey, and *Kondorskaya and Ulomov* (1999) for areas of the former USSR. There are also M_w for events from IGN starting in 2004 taken from the EMSC webpage - see Section 3.3. All these sources provide data for the surroundings of the main cataloguing regions as well and have often been used for EMEC also there (see Table 1). Sporadic M_w magnitudes are also given by the ISC bulletins, which are applied for the areas in the Atlantic Ocean, and as supplementary source also, e.g., in the south-eastern Mediterranean. The degree of harmonization in M_w reached by these catalogues is not always sufficient. This is discussed in Chapter 7.

From the *Hamdache et al.* (2010) file, several longitudes (E instead of W) have been corrected. For the project SHARE (cf. Chapter 1), it was agreed to use data from the University of Athens by K. Makropoulos for Greece instead of those mentioned above. These data are not publicly available and therefore not used for EMEC. Their number encompass only approximately one third of that from the sources we used here. *Ambraseys* (2002) gives M_0 , from which M_w is calculated with the *Hanks and Kanamori* (1979) relation. The two Italian catalogues, except for the limited region mentioned below, are restricted to presumed main shocks with $M_w \geq 4$. At least for the older events, the M_w values in the catalogues were assigned by local transformation relations. For modern time data, original M_w from RCMTS and SMTS were compared with each of the M_w sets above which have corresponding data. The outcome is shown in Section 7.1.

Hamdache et al. (2010) provide data for the whole period of the EMEC catalogue. *Papaioannou* (2001) covers 1896-1980, *Papazachos et al.* (2003) up to 1999, *Papazachos et al.* (2009) since 2000, *Roumelioti et al.* (2010) since 1969, *Roumelioti et al.* (2011) in 2006, *Martínez Solares* (2003) 1396-1899, and *Stich et al.* (2010) since 2005. The *CPTI Working Group* (2004, 2008) catalogues give data for Italian earthquakes up to 2002 and 2006, respectively. In the time period 1000-1900, *CPTI Working Group* (2008) give data only in a region of central Italy (see Table 3) and *CPTI Working Group* (2004) were used only outside this region. After 1900, the *CPTI Working Group* (2008) data were used, and since August 2001 also *INGV* (2007) (see Section

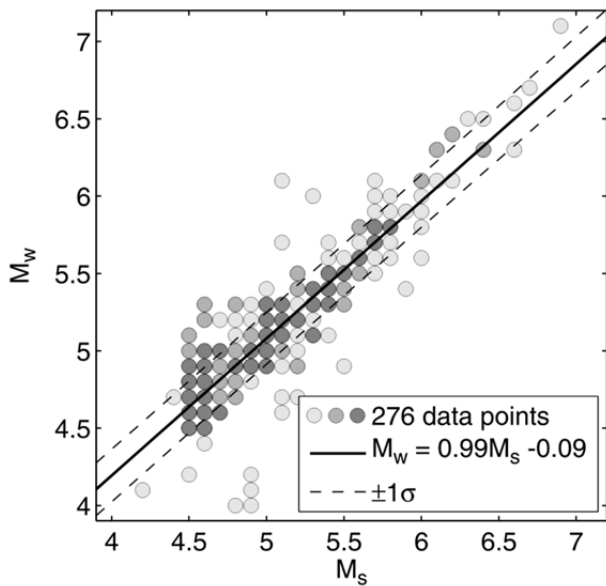


Figure 3. Comparison of M_w from *Papazachos et al.* (2003) vs. M_S from *Sulstarova et al.* (2000). The different grey-shading symbols represent, with increasing darkness, one, two, and three or more data points.

3.3). The *Peláez et al.* (2007) catalogue was used for the time interval 1045-1799 and *Oncescu et al.* (1999) cover the time period up to October 1998, when it is continued by *INFP* (2009). The *Turkish GSHAP catalogue* (2000) has data up to 1999. It has strong similarities to *Papazachos et al.* (2003) for the events west of longitude 30.5°E and we applied it only for Turkey east of 30.5°E up to 1899. The *Ambraseys* (2002) catalogue gives data up to 1999, the *Kalafat et al.* (2010) catalogue for the years 1900-2005, and for 2006 the data were from *Kalafat et al.* (2009). Finally, *Kondorskaya and Ulomov* (1999) provide data up to 1995.

3.3 National and regional catalogues requiring conversion to M_w

M_w is not given for the vast majority of the national and regional catalogues, nor for many special studies. Therefore, M_w has to be derived from other strength measures. The derivation for the different catalogues and special studies is described below. The validity ranges for all derived and used relations are congruent with the data to which they are applied, with only a few data marginally outside the ranges. An exception is the Icelandic catalogues - see Section 7.1.

The algorithms for the calculation of M_w and the hierarchy of strength types from which it is calculated are shown in Table 4. As seen in Table 4, magnitude data have priority over intensity data, but special attention is paid to the historical earthquakes,

where often only the intensity is given. So, the *Glavcheva* (2004) and *BRGM-EDF-IRSN* (2010) catalogues for Bulgaria and France, respectively, and the *Guidoboni and Comastri* (2005) catalogue contain intensities only.

The transformation relations to M_w are given below. Where reliable local formulae exist, these were used, but the majority of the relations were derived either by *GWS09* or in the frame of the present study. Where feasible, a direct comparison with corresponding original M_w values by RCMTS and SMTS was made. These relations are described country- or region-wise in alphabetical order. For relations derived in this study, validity ranges and uncertainties in terms of the 68% confidence bounds for a predicted value based on the chi-square maximum likelihood regression technique presented by *Stromeyer et al.* (2004) are given.

The *Sulstarova et al.* (2000) catalogue for Albanian earthquakes contains events up to 2000, and gives I_0 and M_S magnitudes for each event. The few available original M_w data do not provide a useful M_w - M_S relation, and the conversion to M_w was made by:

$$M_w = 0.995M_S + 0.09 \quad 4 \leq M_S \leq 7 \quad (1)$$

$$\sigma = 0.17 - 0.18$$

obtained by regression of *Papazachos et al.* (2003) M_w vs. *Sulstarova et al.* (2000) M_S (Fig. 3). The uncertainty depends on the residuals between the model and the input data, and the covariance of the regression parameters. The difference between the regression relation and its 68% confidence bounds is approximately one standard deviation σ of a predicted magnitude. For relation (1), $\sigma = 0.17$ and 0.18 denote the lower and upper bounds, respectively.

The *Harbi et al.* (2010) catalogue for eastern Algeria has been paid special cleaning attention, since a certain portion of events have interchanged longitudes (W instead of E; cf. *Hamdache et al.* 2010, Section 3.2 above). Besides an early event lacking size specification, the list of “cleaned” events starts in 1767 and extends beyond 2006. It includes some distinct historical events and gives intensities and various types of magnitudes. We converted intensities to M_w applying:

$$M_w = 0.6 I_{\max} + 0.96 \quad (2)$$

from *Mezcua* (2002), but only to the onshore events assuming epicentral intensity. Relation (2) is only valid for focal depths down to 30 km, but we apply it also to events where no depth is assigned. Actually, there is just one event for which M_w cannot be calculated due to this restriction. Many events have M_S magnitudes, and the non M_S type magnitudes have been converted to M_S . We converted to M_w

using the relations:

$$\begin{aligned} M_w &= 0.796 M_S + 1.280 && \text{for } M_S \geq 5.4 \\ &= 0.585 M_S + 2.422 && \text{for } M_S < 5.4 \end{aligned} \quad (3)$$

by *Bungum et al.* (2003) derived for southern Europe. As for several of the formulae suggested below, the applicability of relations (3) is not proven, but will be tested in the homogenization process of Chapter 7.

Nunes et al. (2004) presented a catalogue for the Azores Islands area for the period 1915-1998. Since the magnitudes are unreliable (J. Batlló, personal communication, 2010), they are taken from *Borges et al.* (2007) or from ISC bulletins. Although normally given highest priority (see Table 3), the *Nunes et al.* (2004) solutions are substituted by the ISC bulletins ones also for the locations in cases where the latter is based on many readings and the two solutions differ considerably.

Glavtović (2009) provided a preliminary catalogue for the Balkans, compiling various sources. M_L magnitudes are given for all events and for each sub-catalogue one of two given transformation formulae from M_L to M_w is applied (see Table 4). This catalogue is related to the BSHAP project on the harmonization of seismic hazard maps for the western Balkan countries, a NATO SPS programme. The *Glavtović* catalogue contains a certain number of duplicates and other inconsistencies, which required some cleaning, including leaving some parts out. It has still been worthwhile to include it in EMEC, since the catalogue covers a large area, for parts of which we have only poor coverage by other sources. It is given the lowest priority in the polygons in which it is applied.

The *Glavcheva* (2004) catalogue contributes events in Bulgaria in the time period 1750-1904. M_w values were calculated from:

$$\begin{aligned} M_w &= 0.0376 M_L^2 + 0.646 M_L + 0.53 \\ \sigma &= 0.29 - 0.34 \end{aligned} \quad (4)$$

derived by *GWS09* for earthquakes in Central Europe sensu lato, after the relation:

$$M_L = 0.72 I_0 + 1.28 \log(h) - 1.13 \quad (5)$$

from *Herak* (1995), with standard errors of estimates 0.38 for M_L , 0.53 for I_0 , and 0.30 for $\log(h)$, was applied to obtain M_L magnitudes. Since relation (4) is very similar to those for quite different parts of the globe, e.g., California (*Uhrhammer et al.* 1996) and western USA (*Bollinger et al.* 1993), cf. *Grünthal and Wahlström* (2003), we feel encouraged to apply it for other regions in Europe as well. The lack of data in recent years prevents a comparison of the

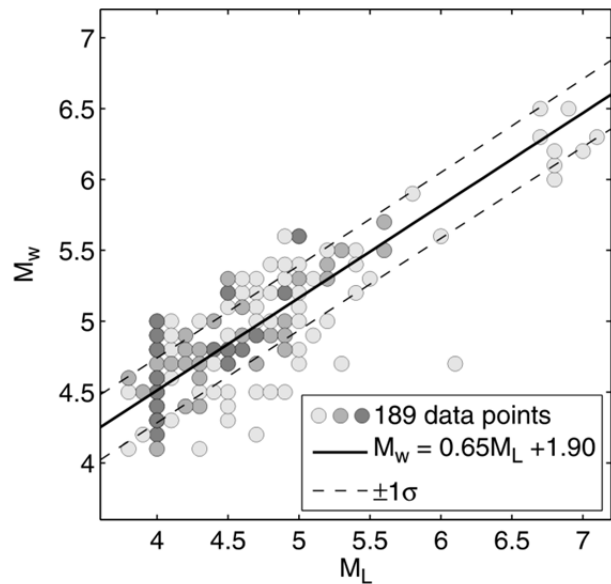


Figure 4. Comparison of M_w from *Kalafat et al.* (2010) vs. M_L from *Godzikovskaya* (2001). For symbol representations, see Fig. 3.

Glavcheva catalogue with original M_w data. This is the case also for several of the catalogues mentioned below. h in relation (5) denotes focal depth in km and is set at 10 km if no value is given.

Godzikovskaya (2001) lists events in the Caucasus from AD 50 to 1997. This catalogue was also used as a supplementary source for eastern Turkey. Lacking original M_w data, the conversion to M_w was made by:

$$\begin{aligned} M_w &= 0.65 M_L + 1.90 && 4 \leq M_L \leq 7 \\ \sigma &= 0.23 - 0.24 \end{aligned} \quad (6)$$

obtained by regression of M_w from *Kalafat et al.* (2010) vs. *Godzikovskaya* (2001) M_L (Fig. 4). Admittedly, the quality of the M_w and M_L of the 189 data pairs is not perfect, but to use this relation seems to be the best way to treat these data. From 1998 and on, data for the Caucasus were taken from ISC bulletins.

The *Shebalin et al.* (1998) catalogue for central and south-eastern Europe is applied, in this study, only for Bulgaria and Macedonia. It contains entries up to 1989. I_0 and M_S values are provided for all events and we have used the intensities and the relations (4) and (5) for the conversion to M_w .

From the *Herak et al.* (1996) catalogue up to 2004 and intended mainly for Croatia, but extended also to several neighbouring countries on the Balkans (see Table 1), original I_0 , I_{max} , and M_L values were all used to convert to M_w . Before 1908, only intensities were considered reliable (see *GWS09*), and from 1908 to 2004, M_L has priority over intensity. Epicentral intensity (I_0) or (exclusive) maximum

felt intensity (I_{\max}) is provided for each felt event. Since many I_{\max} values are given also for events located on land, we make no distinction with I_0 and apply relations (5) and (4) for the M_w calculation whatever intensity type is given. Lacking M_L , M_m has also been used occasionally, and is assumed to have been calibrated with M_L so that identity of the values can be set. The conversion of M_L to M_w follows relation (4).

A catalogue for Cyprus giving intensities was presented by *Galanopoulos and Delibasis* (1965). It extends up to 1963. The relation:

$$M_S = 0.63 I_0 + 0.91 \quad 5 \leq I_0 \leq 11 \quad (7)$$

$$\sigma = 0.70 - 0.74$$

was obtained by regression of data from *Feldman and Amrat* (2007) for the eastern Mediterranean region and combined with relations (3) to yield M_w . *Ambraseys and Adams* (1993) give M_S and/or m_b magnitudes for earthquakes in the Cyprus area in the time period 1890-1990. M_S was converted to M_w applying relations (3) and m_b was converted to M_w with:

$$M_w = 8.17 - \text{SQRT}(42.04 - 6.42 m_b) \quad (8)$$

derived by *GWS09* after *Utsu* (2002) based on global data. *Papazachos and Papaioannou* (1999) give M_S magnitudes for earthquakes in the eastern Mediterranean area, notably Cyprus, in the time period 1896-1997. Relations (3) were used for the magnitude conversion. The earthquakes listed by *Ambraseys et al.* (1994) with epicentres in the SE Mediterranean area polygon were also used in this study. The events occurred in the time period up to 1992 and each event has an M_S , m_b , and/or I_0 value. The conversion to M_w was performed using relations as already described above (see Table 4 for details).

For France we could make use of updated catalogue versions provided by *BRGM-EDF-IRSN* (2010) and *LDG* (2011). The conversions for the catalogues *LDG* (2005) and *LDG* (2011) data followed the routines in *GWS09*, i.e.:

$$M_L = 1.310 M_{L(LDG)} - 1.44 \quad (9)$$

$$\sigma = 0.40 - 0.51 \quad \text{for } M_{L(LDG)} < 4.65$$

$$= M_{L(LDG)} \quad \text{for } M_{L(LDG)} \geq 4.65$$

considering the difference between $M_{L(LDG)}$ by *LDG* (2005) and other Central European M_L magnitudes, combined with relation (4). The *LDG* (2005) catalogue contains $M_{L(LDG)}$ entries for events in 1962-2004. The *LDG* (2011) catalogue was used after 2004. The conversion to M_w for intensity data from *BRGM-EDF-IRSN* (2010) was made by the depth independent master event relation for Central Euro-

pean crustal events given by *Grünthal et al.* (2009b), i.e.:

$$M_w = 0.682 I_0 + 0.16 \quad (10)$$

The *IGN* (2005) catalogue for Iberia, Maghreb, and the nearby water areas of the Atlantic and the Mediterranean, contains epicentral, I_0 , and maximum felt, I_{\max} , intensities, as well as m_b and regional m_bLg magnitudes, all of which were transformed to M_w . The updated *IGN* (2010) version has only I_0 and m_bLg to convert to M_w . However, many historical events listed by these catalogues, although located, lack a strength measure and therefore are not entries in EMEC. Irrespective of which of the two types of intensities is denoted by *IGN* (2005), we strictly used only intensities from land located events for the transformation applying relation (2). m_b magnitudes were converted to M_w with relation (8) and m_bLg with:

$$M_w = 0.311 + 0.637 m_bLg + 0.061(m_bLg)^2 \quad (11)$$

from *Rueda and Mezcuca* (2002). M_w magnitudes from *IGN* for the years 2004-2006 published on the *EMSC* webpage have substituted the calculated ones, if not given by *SMTS* or *RCMTS* (cf. Section 3.2).

The catalogues for the Catalanian part of Iberia (*IGC* 2009a, b) span the time periods from 1152 to 1995, and from 1996 and on, respectively. The first catalogue contains epicentral intensities which were converted to M_w by relation (2) (recommendation from J. Batlló, personal communication, 2010). The second part contains M_L , which has only a minimal difference from m_bLg (J. Batlló, personal communication, 2010) and so relation (11) can be applied.

F. Carrilho (personal communication, 2009) gives M_L magnitudes for events in Portugal and surroundings for the years 1961-2000. This is an improved and extended version of the catalogue by *Carrilho et al.* (2004). The identity relation $M_w = M_L$ is suitable for the conversion to M_w (S. Vilanova, personal communication, 2010).

For Italy *INGV* (2007) is used as one source for earthquakes from August 2001 and on, giving M_L and/or M_d magnitudes. These were converted to M_w using the relations:

$$M_w = 0.906 M_L + 0.65 \quad \sigma = 0.21 - 0.22 \quad (12)$$

and

$$M_w = 1.472 M_d - 1.49 \quad \sigma = 0.20 - 0.22 \quad (13)$$

respectively, both derived by *GWS09*. We refrain from using *INGV* (2007) data before August 2001

for reasons given by *GWS09*. The other sources used for Italy have given M_w (see Section 3.1.2).

The Levant area is especially rich in historical data, still it is a complex task to organize them in a suitable manner. From the *Khair et al.* (2000) catalogue up to 1999, M_S magnitudes and intensities were converted to M_w magnitudes. M_L is also given, but never when M_S is lacking (whereas the opposite can be the case). Only very few original M_w are available for this area. Therefore, we had to follow an approach based on relations, which are not calibrated with respect to local data of this region (for details see Table 4). Nevertheless, the resulting M_w values seem to be reasonable.

Abdallah et al. (2004) provides M_L magnitudes for events in the Levant area in the time period 1900 and on. Visualizing original M_w vs. M_L a very scattered picture is obtained, i.e., even for this instrumental part no local relation could be derived. Therefore, M_L was converted to M_w using relation (4).

The *Sbeinati et al.* (2005) catalogue is focused on Syria. It has events in the time period up to 1899. However, only about 20% of the events have a specified location. These and only these events have M_S and I_0 values. Only M_S was used for the M_w conversion, performed according to relations (3).

From the *Ambraseys* (2006) catalogue of large events, $M_S \geq 7$, in different areas, those in the SE Mediterranean area polygon are picked. The catalogue also lists many events in Turkey, but here we have many other sources (see above). The M_S values were converted to M_w applying relations (3).

The catalogues by *Feldman and Amrat* (2007), *Khair et al.* (2000), and *Sbeinati et al.* (2005) all list large events in the SE Mediterranean area polygon and the eastern part of the Turkey polygon, *Feldman and Amrat* (2007) also in Cyprus. Most M_w magnitudes calculated from the *Feldman and Amrat* (2007) entries of earthquakes in these polygons, in the time up to 1899, are based on M_L , but where M_S is given this has top priority. If no magnitude is provided, I_0 was used for the conversion. For M_S , relations (3), for M_L :

$$M_S = 1.37 M_L - 2.19 \quad 4.7 \leq M_L \leq 7.4 \quad (14)$$

$$\sigma = 0.32 - 0.39$$

obtained by regression of data from *Feldman and Amrat* (2007) combined with relations (3), and for I_0 , relation (7) combined with relations (3), were used for the transformations to M_w .

The area of Libya, western Egypt, and Tunisia is problematic with respect to the availability of local seismicity data. For Libya we could at least use several publications by *Ambraseys*. M_S and/or m_b are given for catalogued events in Tripolitania, Libya, in

1900-1976 (*Ambraseys* 1984), and relations (3) and relation (8), respectively, are applied. M_S magnitudes from *Ambraseys* (1994) for all Libya in the time period 1900-1990 were converted with relations (3). Also some events in *Ambraseys et al.* (1994; see above) fall in the Libya and western Egypt polygon. Lacking access to more local data, also data from ISC bulletins were used for the polygon Libya and western Egypt.

For the Mediterranean area, *Guidoboni and Comastri* (2005) provide intensities for earthquakes in the time period 1000-1500. This reference was applied in the SE Mediterranean area, Cyprus, and Turkey polygons. Maximum felt intensities are listed and we assume them to be equal to epicentral intensity and so applied relation (7) to convert to M_S followed by relations (3) to obtain M_w .

Ambraseys (2009) thorough investigation of earthquakes in the Mediterranean and Middle East is mainly qualitative. Where earthquake parameters are given – M_S in a few isoseismal maps for events in the twelfth century – these have been included with the highest priority.

For the part of the Atlantic Ocean west of longitude 15°W, which belongs to this study, i.e., the polygon AOC (Fig. 1), no local bulletins exist besides that for the Azores Islands region treated above. Therefore, the data from ISC bulletins were used. The first event in this area occurred in 1921 (ISS). The M_S magnitude is given for the vast majority of the events and was transformed to M_w , when this was lacking, using:

$$M_w = 10.85 - \text{SQRT}(73.74 - 8.38 M_S) \quad (15)$$

derived by *GWS09* after *Utsu* (2002) based on global data. When neither M_w nor M_S is given, m_b was transformed to M_w with relation (8).

4 Innovations in the northern part

Updates of the catalogues and data files from agencies used for the part of Europe treated by *GWS09* (CENEC) have been incorporated in EMEC (Table 1). Some of the new data are continuations in time beyond 2004, the final year of CENEC, whereas others, besides a plain continuation, comprise revisions of earlier events. In excess to the catalogues encompassing also parts south of 44°N and therefore mentioned in Chapter 3, the updates include Austria (*ZAMG* 2009), Belgium (*Camelbeeck* 2009), Fennoscandia (*FENCAT* 2009), France (*BRGM-EDF-IRSN* 2010; *LDG* 2011), Germany (*SZGRF* 2010), Hungary (*Georisk* 2009), the Netherlands (*KNMI* 2009), Switzerland (*Fäh et al.* 2011), and UK (*Musson and Sargeant* 2007). The new UK

catalogue contains only main shocks and is supplemented by the two catalogues used by *GWS09*. Some of the catalogues also apply to adjacent polygons (see Table 1). The *Fäh et al.* (2011) catalogue gives more realistic magnitude assessments for historical key earthquakes compared with its forerunner *Fäh et al.* (2003). Thus the 1356 Basel earthquake has $M_w = 6.9$ in *Fäh et al.* (2003) and $M_w = 6.6$ in *Fäh et al.* (2011). The new value is the same as determined by *Grünthal and Wahlström* (2003) in their catalogue for Europe north of 44°N. $M_w = 6.6$ for the Basel earthquake is possibly still a conservative value. *Fäh et al.* (2011) is applied in two and nine cases in Germany and France, respectively.

Newly introduced catalogue-polygon combinations (see Tables 1 and 3) compared to *GWS09* are *Herak et al.* (1996) in Austria, the Hungarian catalogues in Romania, *Oncescu et al.* (1999)/*INFP* (2009), and *Kondorskaya and Shebalin* (1982) both in Moldavia, and *Kalafat et al.* (2009, 2010) in Ukraine.

The transformation formulae of *GWS09* have been kept (Table 5) except where the harmonization is defective (see Chapter 7). An exception is Iceland, where the *IMO* (2007b) data contain a local M_w magnitude which has proved unreliable and therefore has been excluded. M_w magnitudes have now, like in the first Icelandic catalogue (*IMO* 2007a), been calculated exclusively from M_L (see Section 7.1). For the *Živčić* (1993) catalogue, the formula for M_L to M_w conversion by *INGV* (2007) is now used following a recommendation by M. *Živčić* (personal communication, 2009).

5 Special studies

As mentioned in Chapter 2, special studies generally have priority over catalogues. Many special studies give M_w or M_0 . It is assumed that sufficient effort has been made to obtain credible values and these are adopted here. Special studies giving M_w have priority over those not giving M_w . For special studies lacking M_w , conversions are performed using formulae applied to catalogues valid in the polygons in which the corresponding events are located. The references of all special studies are listed in Table 2.

6 Fake events

The CENEC catalogue is accompanied by a list of fake events. This is included in the electronically available download, where the selection criteria of the events are also specified. The identification of fakes was part of this study. If not published somewhere else, the fake events are referenced as “renewed analysis (GruRA)”. Thus every entry in the

list has been individually tested as to its status as a fake. Erroneous information on place, date, or magnitude, mistaken storms, rock falls, landslides, etc. are causes for an event to be classified as fake. Events which have been listed on separate days by different sources due to the difference between the Julian and Gregorian calendars are not indicated in the fake list, nor are entries which differ in time or place if neither of them can be verified as wrong, also no shifts of only one day. Of course, only one of the entries is included in the catalogue in such cases. The sources used for the fake list are given in connection with the list if not appearing in the main reference list.

A principal problem with most fake lists is that they normally do not state why an event is classified as a fake nor to which source they belong. The event could be (1) non-seismic, e.g., confused with a storm or a collapse not connected with an earthquake, (2) seismic but with changed time, location, and/or magnitude compared to a previous solution, or (3) a duplicate. The sign errors in longitude for several events in the *Hamdache et al.* (2010) and *Harbi et al.* (2010) catalogues (Sections 3.2 and 3.3, respectively) are corrected in the EMEC catalogue, but not included in the fake list.

A problem with suspected duplicates is that, particularly for historical events, it is often hard to determine if two or more entries belong to the same event or not. A first judgment has to be based on a composite comparison of location, time, and strength. For example, entries with quite different location and magnitude, but similar time of occurrence, are cases where such a decision can be difficult. A final judgment can only be made on the basis of studying contemporary sources.

Although induced events cannot be denoted as fake events, there are a few cases where catalogues interpret induced events as tectonic earthquakes. Known such cases do not enter the EMEC catalogue.

7 Harmonization of M_w

Following the algorithms presented above the EMEC catalogue could be unified with respect to M_w . It remains to demonstrate the harmonization in terms of M_w reached for the different parts. Similar to *Grünthal et al.* (2009b) we perform these tests along two lines: (1) comparison of given and calculated M_w with original M_w ; (2) comparison of the M_w relation to I_0 and h (focal depth), and to I_0 only. Each of these tests was accomplished for every catalogue, data permitting. Only data from events in the allowed polygons according to Table 1 were used in all tests. In addition, calculated M_w values for the largest events have been compared with those of

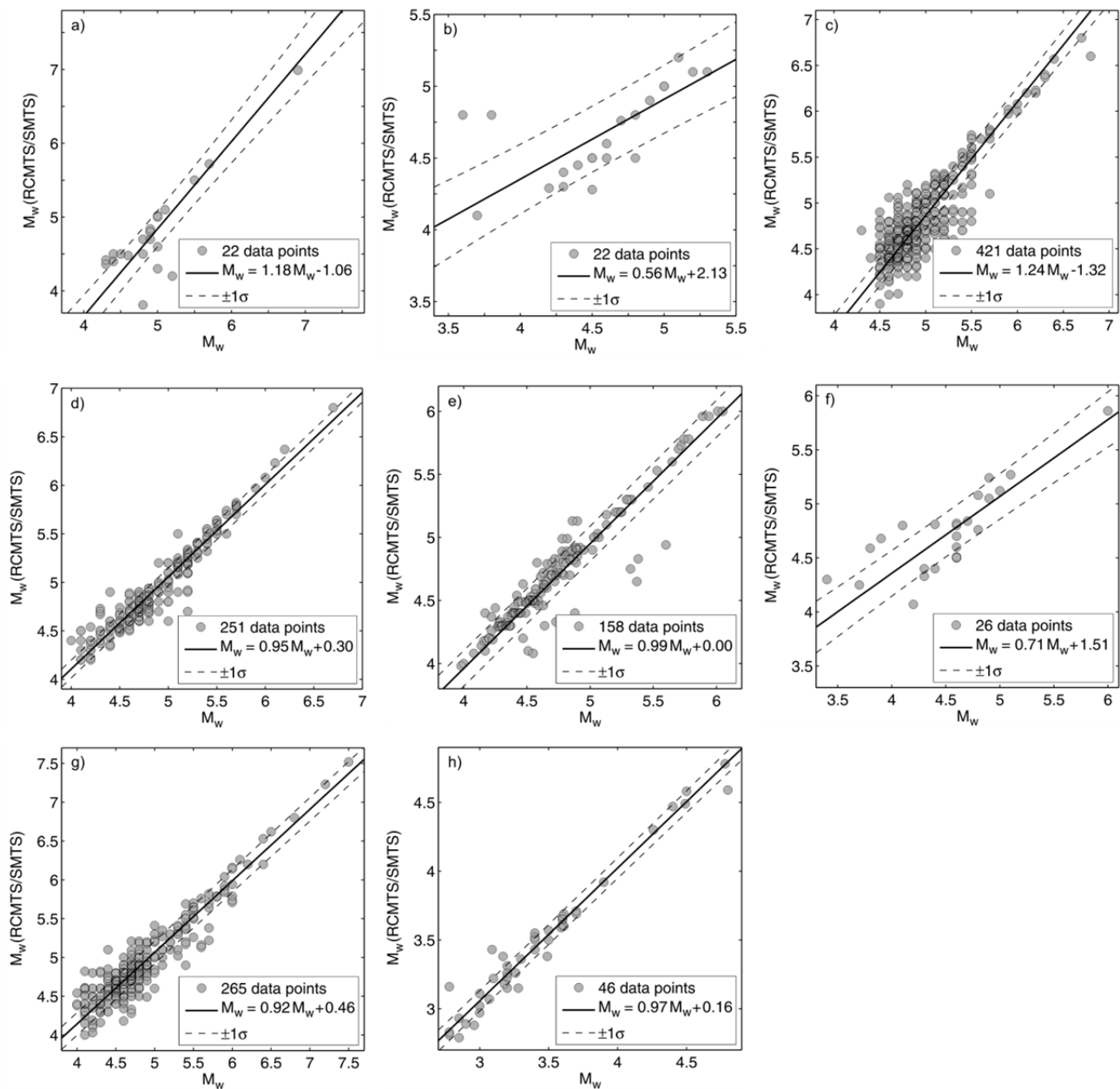


Figure 5. Original M_w from RCMTS and SMTS vs. M_w given for entries in the catalogues by **a** *Hamdache et al.* (2010), **b** *Papaioannou* (2001), **c** *Papazachos et al.* (2003, 2009), **d** *Roumelioti et al.* (2010, 2011), **e** *CPTI Working Group* (2004, 2008), **f** *Oncescu et al.* (1999) and *INFP* (2009), **g** *Kalafat et al.* (2009, 2010), and **h** *Fäh et al.* (2011). The comparisons of data are shown to illustrate the goodness of fit. The relation for each catalogue is given only in order to quantify the fit, but is not used to derive M_w . The data in Fig. 5a, b, and f are not satisfactory due to lack of data. These graphs include data up to 2008 to underpin our interpretations.

Engdahl and Villasenör (2002) and a good fit was found.

7.1 M_w - M_w calibrations

Visualization was performed for original moment-tensor M_w from RCMTS and SMTS vs. each of the M_w sets of Section 3.2 which have more than 20 data points. This applies to *Hamdache et al.* (2010), *Papaioannou* (2001), *Papazachos et al.* (2003, 2009), *Roumelioti et al.* (2010, 2011), *Stich et al.* (2010),

CPTI Working Group (2004, 2008), *Oncescu et al.* (1999)/*INFP* (2009), and *Kalafat et al.* (2009, 2010). From the CENEC part of the area, an analogous graph could be made only for the *Fäh et al.* (2011) catalogue. The obtained graphs, Fig. 5a-h, show that the M_w sets from the various catalogues are not much different from the respective original M_w sets. To make it clear, these figures illustrate the achieved calibration and are not used to derive any M_w . In order to increase the significance of the figures, also the data for the years 2007-2008 (i.e., after the year of termination of EMEC) were added. All graphs of

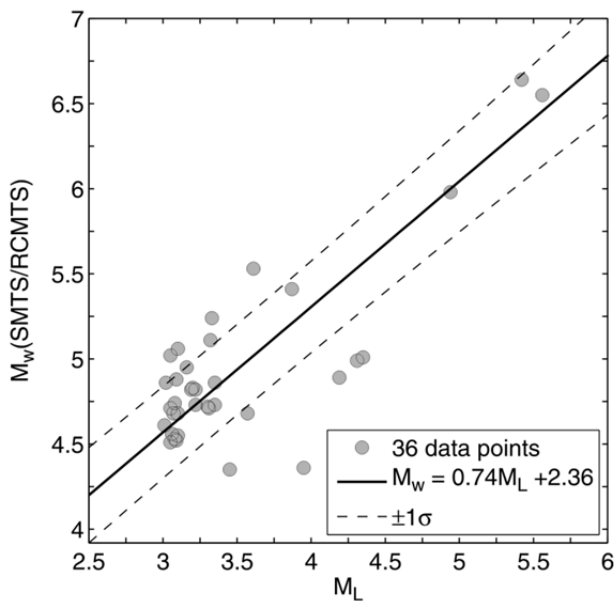


Figure 6. Original M_w from RCMTS and SMTS vs. M_L from the IMO (2007b) catalogue.

Fig. 5, which are based on a sufficient number of data, show a very good fit. Only those with less than 30 data pairs (Fig. 5a, b, f) have a less convincing fit.

The data by *Camelbeeck et al.* (2010) and *Musson and Sargeant* (2007) include only one and two M_w entries, respectively, above the threshold magnitude with corresponding (almost identical) SMTS magnitude. *FENCAT* (2009) has corresponding values only for a few offshore events.

The only adjustment carried out was for the Icelandic catalogues (*IMO* 2007a, b). A new relationship with original M_w vs. M_L illustrated in Fig. 6 was introduced (cf. Table 5):

$$M_w = 0.74 M_L + 2.36 \quad 3 \leq M_L \leq 5.6 \quad (16)$$

$$\sigma = 0.27 - 0.32$$

This is the only relation of this study which has been extrapolated outside the range of the data used for the regression for a significant number of events. However, the extrapolation is in accordance with similar linear equations covering a large magnitude range.

7.2 Intensity based calibrations

For intensity based calibrations we generated, analogous to *Grünthal et al.* (2009b), graphs of M_w vs. epicentral intensity, I_0 , and focal depth, h , and M_w vs. I_0 , respectively, for each catalogue with available data. Some catalogues provide data for only one of the graphs. Each figure also includes the respective master event relations provided by *Grünthal et al.* (2009b), i.e., with and without the h term. Since

these were derived for crustal events, the depth data are restricted to the range of 5-25 km. An implicit assumption for the comparisons is that the intensity assignments do not differ significantly for the various catalogues. The correlations are good to excellent in most cases, implying that the harmonization with respect to M_w magnitudes is good. Figure 7a-d give examples. It has to be stressed that such a comparison does not imply that the master event relation is valid for all these regions, i.e., such tests are intended to be relative only with respect to internal consistency. Obviously, the agreement for the *Sulstarova et al.* (2000) and *Sbeinati et al.* (2005) catalogues is not so good (Fig. 7a, d), for *Shebalin et al.* (1998) it is excellent (Fig. 7b), and for *IGN* (2010) relatively good (Fig. 7c).

8 Entries of the EMEC catalogue

After the data processing, selection, and harmonization check described above, the EMEC catalogue, which consists of some 45,000 tectonic earthquakes beginning in the year 1000 - or in some areas earlier (see Chapter 2) - and ending in 2006, has been extracted from the database. More than 400 of the entries are from special studies. The epicentres located within the study area are depicted in Fig. 8a, b. While Fig. 8a shows all catalogued earthquakes in EMEC, Fig. 8b is restricted to those with $M_w \geq 6.0$ which gives a clearer picture for high seismicity regions such as the eastern Mediterranean area.

The EMEC catalogue is available at the home page of the GFZ German Research Centre for Geosciences: [<http://www.gfz-potsdam.de/EMEC> and dx.doi.org/10.2312/GFZ.EMEC, respectively] where the following information is given:

- *Origin time.* Year, month, day, hour, and minute, specified to the smallest unit given by the original source. Generally, the original data have been kept, i.e., no attempt is made to standardize GMT and local times, Julian and Gregorian dates, etc. However, the different timings were considered in the search for duplicates.
- *Location.* Epicentral coordinates and, if given, focal depth.
- *Intensity, I_0 .* Epicentral or (if assumed similar to epicentral) maximum intensity if given by the original source.
- *Magnitude, M_w ,* with uncertainty where available (cf. next chapter), and type and value of original entry from which it was calculated according to the algorithms of Tables 4 and 5.
- *Reference.* The national or regional catalogue (Table 1) or special study (Table 2). Only one reference is listed for each entry, although the pa-

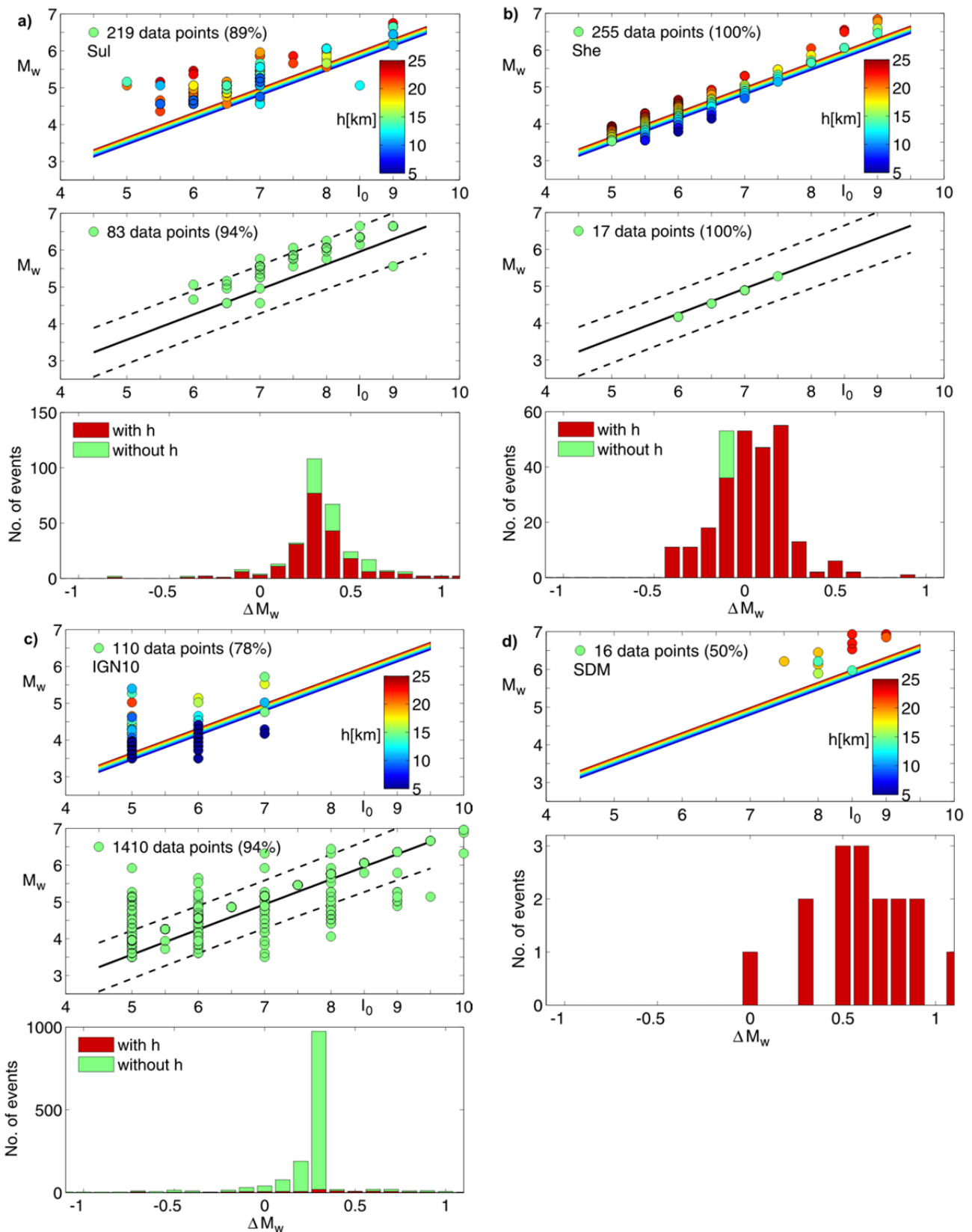


Figure 7. Preferred M_w values (original, given or calculated) drawn vs. given I_0 and h values (top graph), and vs. I_0 values only (centre graph), for different local national and regional catalogues ($M_w \geq 3.5$; $I_0 \geq 5$): **a** *Sulstarova et al.* (2000), **b** *Shebalin et al.* (1998), **c** *IGN* (2010), and **d** *Sbeinati et al.* (2005; only data with depths). The lines refer to the master event relations derived by *Grünthal et al.* (2009b). The depth distribution of the data and regression lines are indicated by different colours (top graph). The rate of data points within one standard deviation from the relations is indicated. The bottom graph shows the distribution of the difference in M_w between the points and the lines

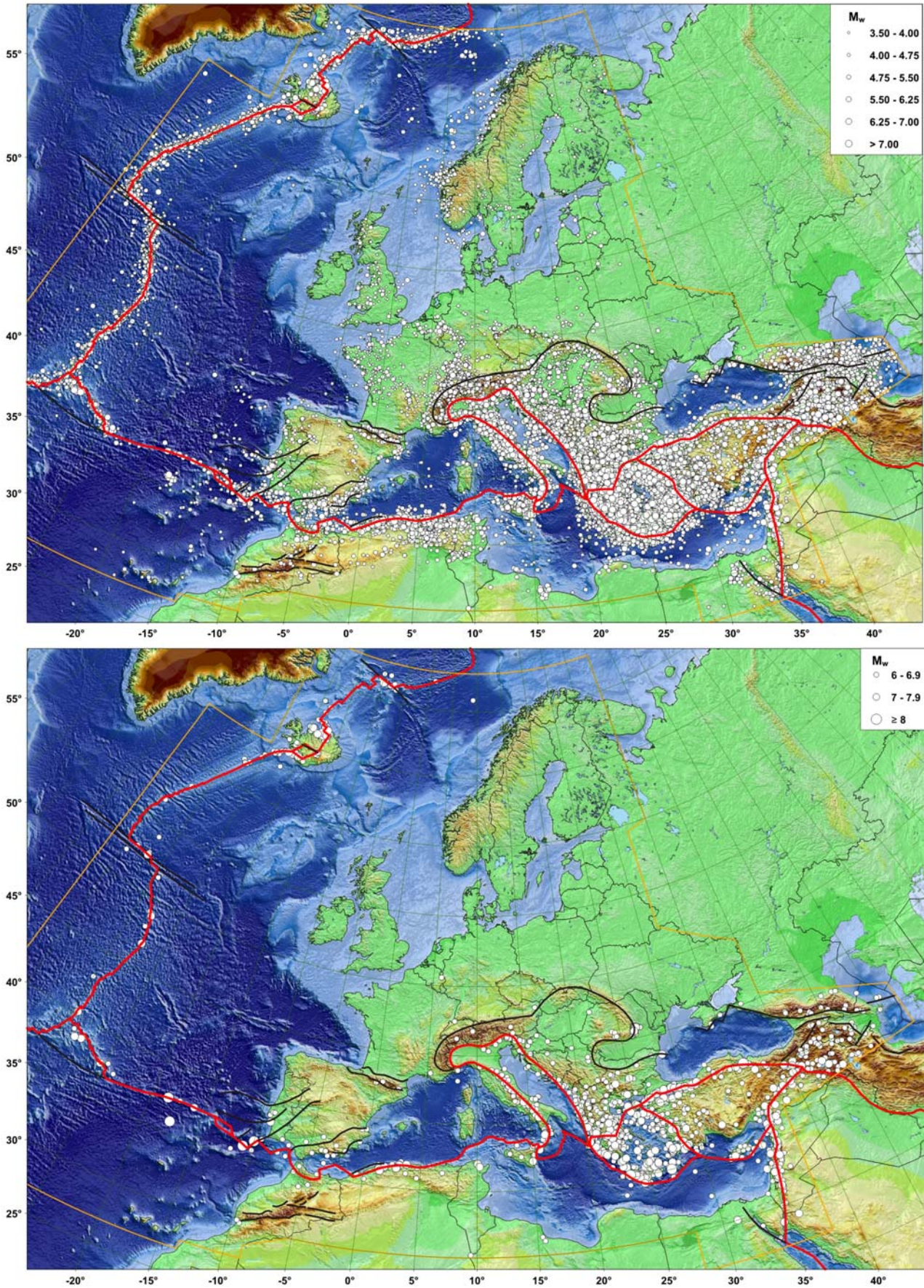


Figure 8. Epicentre map of the EMEC catalogue. **a** All events. **b** Events with $M_w \geq 6.0$. The buff-coloured polygon delineates the study area. The plate boundaries, in red, are according to *Bird (2003)* with modifications in the area of Gibraltar and further west up to 15°W after *Jiménez-Munt and Negredo (2003)* and *Zitellini et al. (2009)* as well as in the N-Atlantic and Iceland after *Byrkjeland et al. (2000)* and *Tsikalas et al. (2012)*. The black lines represent other selected first-order tectonic elements.

parameters were sometimes taken from more than one source, e.g., when an M_w value from RCMTS or SMTS was included. A special case is posed by the focal depths of the *Papazachos et al.* (2003) entries, which all were taken from *Burton et al.* (2004), since *Papazachos et al.* (2003) did not publish depths.

9 Uncertainties

Qualitative or quantitative uncertainties have been incorporated into some parametric earthquake catalogues since their advent. One of these is the catalogue by *Grünthal* (1988) with uncertainty classes for location, depth, and intensity for all earthquakes with these parameters. Unfortunately, this has not become standard and only about 15% of the original catalogues which were used for EMEC contain uncertainties for epicentre location, about 25% for depth and less than 40% for a strength measure, most commonly intensity. Only a small fraction of them presents uncertainties for all events. The information on uncertainties is thus incomplete. Moreover, the expressions of uncertainties vary considerably. Some catalogues give estimated actual values, and these can relate to one or (as for *Fäh et al.* 2011) two standard deviations, whereas others just indicate ranges of the uncertainty as quality classes.

What concerns a big set of original M_w readings in EMEC, the Swiss moment tensor solutions (SMTS), their uncertainties are in the range of 0.1-0.2 (*Braunmiller et al.* 2005; Braunmiller, personal communication, 2007). M_w values resulting from a conversion have, of course, larger uncertainties. Modern catalogues used for EMEC which provide M_w and include uncertainty assignments are the Swiss (*Fäh et al.* 2011), Greek (*Papazachos et al.* 2003), and Italian (*CPTI Working Group* 2004, 2008) catalogues. We include in the EMEC database the uncertainties for M_w provided by these catalogues.

Fäh et al. (2011) give sporadic uncertainties in M_w for 11% of the events in the period before 1975. In the period 1975–2006, 95% of the events with M_w have an uncertainty assigned. This is always < 0.4 units and for 34% of the cases with uncertainty this is ≤ 0.2 .

The Greek catalogue gives no individual uncertainty assignments. For each event, in the instrumental part, i.e., the period 1911-1999, the uncertainty in M_w is estimated at 0.25, and in the historical period at 0.35 when the number of available macroseismic data points is ≥ 10 and at 0.5 otherwise.

The Italian catalogues provide uncertainty assignments for de facto all events. In *CPTI Working Group* (2004), all assignments are < 0.35 , also in the historical time. For the most recent decades, 90% of

the events have an uncertainty ≤ 0.2 . There is a remarkable difference in the *CPTI Working Group* (2008) M_w uncertainty assignments. Here several tens of events have values in the range of 0.5-1.02, and in the recent decades only some 45% have uncertainties ≤ 0.2 . Thus an adjustment to more realistic values (cf. *Fäh et al.* 2011) has been done.

In the total about 45% of the entries in EMEC have uncertainties in M_w . About 90% of these are in the *Papazachos et al.* (2003) catalogue, i.e., are not individually assigned. The assessment of uncertainties in EMEC according to a harmonized rigorous procedure which would provide realistic estimates event by event is beyond the scope of this study.

10 Conclusions and discussion

It has been a long and non-trivial work to compile, edit, scrutinize, and harmonize all the data in the large database and then to develop the rules according to which the entries in the EMEC catalogue have been selected. This includes the identification of duplicates and various types of fakes and induced events.

Some 80 national or regional catalogues from all Europe and the Mediterranean region and close to 100 special studies form the basis for EMEC. All these data have been incorporated into a database, where the different entries to one and the same earthquake constitute a so called event family. According to a strict hierarchy algorithm one member of such an event family is picked as the entry for EMEC. Altogether there are some 45,000 entries in EMEC from over 700,000 entries in the entire database.

A critical part of the cataloguing based on numerous sources is the check whether the common strength measure, here in terms of M_w , has reached a sufficient level of harmonization. Different tests have shown that the vast majority of data agree well. The magnitudes from a few sources required a rigorous modification, i.e., recalculation. Some minor parts are still not perfect or not possible to fully check. A novelty compared to *GWS09* is that very small focal depths of crustal tectonic earthquakes, often poorly constrained, as sometimes given in catalogues together with magnitudes M_L , are not acknowledged. Such magnitude-depth combinations would lead to intensity values which were not observed. Thus only originally given depths of 3 km or greater for $M_w = 3.5$ -3.9 events, 5 km or greater for $M_w = 4.0$ -4.4 events, and 7 km or greater for $M_w \geq 4.5$ events are given in the catalogue and are used in formulae where a depth term is part of the calculation of M_w from intensity.

Fake events in historical times are given in a special list on our web page. Besides identified non-seismic events, the list includes entries with errone-

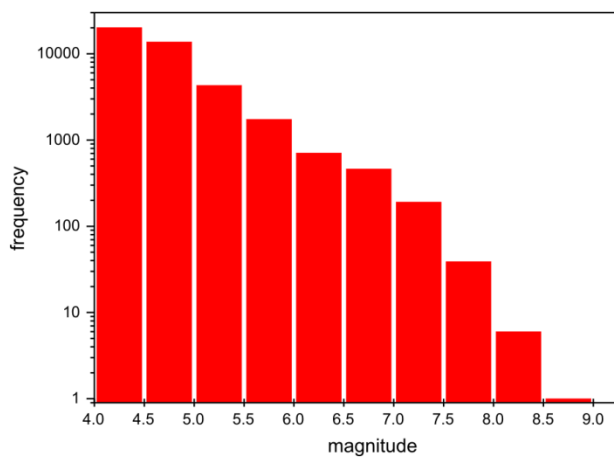


Figure 9. Frequency of the earthquakes of the EMEC catalogue in half-magnitude classes.

ous date or location as well as duplicates. It can sometimes be hard to determine if an entry is a fake or not, and if two or more entries belong to the same event or not (duplicates).

Induced or triggered events are not a subject of EMEC, but are included in the large database. Most domestic catalogues which contain such data denote them as such - but not all of them. Mining areas, as well as those where natural gas and oil are or were exploited, are well-known, which facilitated the withdrawal of such events. Other types of induced events can occur in enhanced geothermal systems, be due to water reservoirs, or are interpreted as rain triggered (e.g., Hainzl *et al.* 2006). Sometimes it is difficult to distinguish, if an event is tectonic or induced. This issue has even been subject of scientific dispute. There are a few instances where catalogues classify induced events as tectonic earthquakes. They are not included in the EMEC catalogue.

As mentioned already in Section 1, the assessment of data completeness with time is not part of earthquake cataloguing. However, this issue is briefly discussed here. A completeness analysis is part of the data pre-processing for the calculation of the parameters of frequency-magnitude relations. Usually the completeness analysis is made for declustered data, where foreshocks and aftershocks have been removed. The data completeness with time is not only strongly magnitude dependent but changes considerably from region to region in Europe and the Mediterranean area. The completeness of earthquake data depends on the way records (historical, pre-instrumental, or instrumental) were made, stored, have survived with time, and were retrieved for the cataloguing. The way notations have been made on earthquakes in pre-instrumental times depends on cultural-historical aspects. A comprehensive completeness analysis for the Euro-Med region is therefore an ambitious task in itself. The first step

is to define the areas with common cultural-historical background, which, e.g., for Germany, are two or three depending on the chosen approach. This means that different experts might have different views alone with respect to this sub-task. The next step is to select a suitable approach to determine the completeness. Different approaches can result in differing completeness patterns. Often these methods do not provide an uncertainty range.

Completeness analyses on the basis of EMEC, or its preliminary versions, have been performed for the entire Euro-Med region and for selected areas (Grünthal *et al.* 2010; Chan and Grünthal 2010; Sørensen *et al.* 2012; Hakimhashemi and Grünthal 2012). Figure 8a, b shows the geographical distribution of epicentres. Figure 8a depicts all the epicentres of EMEC. The seismicity is basically concentrated along the plate boundaries and to some extent associated with other first-order tectonic elements. The highest seismic activity is observed along the Aegean arc and the northerly adjoining boundaries of microplates, in the western Balkans, Italy, northern Algeria, and southern Iberia, as well as in the east in the Caucasus and along the Dead Sea fault zone. North of the Mediterranean most of the seismicity is bounded by the border fault of the Alpide belt, with the Alpine chain in the west and the Carpathian chain with the Vrancea region in the east. North of the Alpide belt the Rhine area has the highest concentration of seismicity. The Mid-Atlantic ridge including the Azores Islands and Iceland is another well documented zone of high seismicity.

An even clearer association of seismicity with active tectonic structures is shown in Fig. 8b, which is restricted to earthquakes with $M_w \geq 6.0$. Apart from a few exceptional cases the $M_w \geq 6.0$ seismicity is associated with the Alpide belt and other plate boundaries. This figure also shows that the vast majority of $M_w \geq 7.0$ events is connected with the plate boundaries, particularly the Aegean subduction.

A histogram displaying the number of events in EMEC in different magnitude classes is given as Fig. 9. Obviously this should not be misinterpreted as the frequency-magnitude relation of complete data.

Only some of the basic data for EMEC consider uncertainties of key parameters of the events. The national and regional catalogues which provide uncertainties use quite different criteria; some give explicit values whereas others indicate them in quality classes. Uncertainty assignments of modern catalogues are discussed and where available for M_w they are included in EMEC. The assessment of uncertainties event by event in EMEC is beyond the scope of this study.

The availability of earthquake catalogues or data files has rather decreased than increased during the

last years. Certain catalogue agencies providing their files on the web over the years have closed their URL. Restrictions and commercialization are increasing. Other online versions change their entries permanently or frequently. Some agencies at least announce that new versions will become available online at a certain time of the year, or associate a version with a date. Others shift a rather limited time window covering the most recent data only. In short, we cannot guarantee that the files we refer to are still available, or still contain exactly the set of earthquakes we have used at the given URL. The years we give to the respective references at least indicate from what time we have made use of them.

Frozen parametric catalogues are preferred sources. We provide our frozen catalogue version with the guarantee of its permanent availability - including the errors which are unavoidable in any earthquake cataloguing, especially for larger regions and long-time spans.

The main purpose of the EMEC catalogue is to provide a database for seismic hazard calculation, but it can also be used for various kinds of seismicity studies. Its earlier versions have already been successfully applied in numerous projects, some of them mentioned in Chapter 1. This publication should be the basis for its further use. Since catalogue work is a never-ending task, future studies might point out how this catalogue can be improved and sophisticated.

Acknowledgements For access to new catalogues and other data, our thanks are due to S. Aliaj (for Albania data), A. Harbi (Algeria), Ch. Hammerl and W. Lenhardt (Austria), J. Batlló (Azores and Catalonia), B. Glavatović and M. Herak (the Balkans), Th. Camelbeeck (Belgium), R. Glavcheva, I. Paskaleva (Bulgaria), M. Uski (Fennoscandia), J. Lambert and M. Nicolas (France), C. Papaioannou and B. Papazachos (Greece), A. I. Álvarez (Iberia and Maghreb), M. Stucchi (Italy), L. Feldman, A. Hofstetter, and A. Shapira (Near East), H. Bungum (Norway), B. Guterch (Poland), F. Carrilho and S. Vilanova (Portugal), D. Fäh (Switzerland), D. Kalafat and K. Seteyan (Turkey), and R. Musson (UK). The authors also wish to thank the anonymous reviewers for valuable remarks. Our colleague D. Stromeier provided significant contributions to the study. Other institutional colleagues contributing were, Ch. Bosse, U. Lemgo, K. Schellbach, S. Strutzke, and A. Wirth. Financial support was provided from Aon Benfield.

References

- Abdallah A-QA, Feldman L, Shapira A (2004) The Unified Earthquake Catalogue of the region. Geophysical Institute of Israel (www.gii.co.il/heb/Teken/Catalog-rprt.htm with the data file at www.gii.co.il/html/seis/seis_search.html)
- Ahorner L (1983) Historical seismicity and present-day microearthquake activity of the Rhenish Massif, Central Europe. In: Fuchs K et al (eds) Plateau uplift. Springer, Berlin, Germany, pp 198–221
- Ahorner L, Pelzing R (1983) Seismotektonische Herdparameter von digital registrierten Erdbeben der Jahre 1981 und 1982 in der westlichen Niederrheinischen Bucht. *Geol Jb E26*:35–63
- Ahorner L, Pelzing R (1985) The source characteristics of the Liège earthquake on November 8, 1983, from digital recordings in Germany. In: Melchior P (ed) Seismic activity in Western Europe with particular consideration to the Liège earthquakes of November 8, 1983, NATO ASI Series C: 144, Reidel Publ Comp, 263–289
- Aktuğ B, Kaypak B, Çelik RN (2010) Source parameters for the $M_w=6.6$, 03 February 2002, Çay earthquake (Turkey) and aftershocks from GPS, southwestern Turkey. *J Seismol* 14:445–456
- Albini P (2004) A survey of the past earthquakes in the Eastern Adriatic (14th to early 19th century). *Ann Geophys* 47:675–703
- Albini P, Pantosti D (2004) The 20 and 27 April 1894 (Locris, Central Greece) earthquake sources through coeval records on macroseismic effects. *Bull Seismol Soc Am* 94:1305–1326
- Albini P, Rovida A (2010) The 12 May 1802 earthquake (N Italy) in its historical and seismological context. *J Seismol* 14:629–651
- Alexandre P (1990) Les séismes en Europe occidentale de 394 à 1259. Nouveau catalogue critique. Publ de l'Observatoire Royal de Belgique, Série Géophysique N° Hors-Série, 267pp
- Alexandre P, Kusman D, Petermans T, Camelbeeck T (2008) The 18 September 1692 earthquake in the Belgian Ardenne and its aftershocks. In: Fréchet J, Meghraoui M, Stucchi M (eds) Historical seismicity, interdisciplinary studies of past and recent earthquakes, Springer, pp 209–230
- Altinok Y, Alpar B, Özer N, Gazioglu C (2005) 1881 and 1949 earthquakes at the Chios-Cesme Strait (Aegean Sea) and their relation to tsunamis. *Nat Hazards Earth Syst* 5:717–725
- Ambraseys NN (1984) Material for the investigation of the seismicity of Tripolitania (Libya). In: Brambati A, Slejko D (eds) The OGS Silver Anniversary Volume. O.G.S, Trieste, pp 143–153
- Ambraseys NN (1994) Material for the investigation of the seismicity of Libya. *Libyan Stud* 25:7–22
- Ambraseys NN (1997) The little-known earthquakes

- of 1866 and 1916 in Anatolia (Turkey). *J Seismol* 1:289–299
- Ambraseys NN (2001a) The Kresna earthquake of 1904 in Bulgaria. *Ann Geofis* 44:95–117
- Ambraseys NN (2001b) The earthquakes of 10 July 1894 in the Gulf of Izmit (Turkey) and its relation to the earthquake of 17 August 1999. *J Seismol* 5:117–128
- Ambraseys NN (2001c) Far-field effects of Eastern Mediterranean earthquakes in Lower Egypt. *J Seismol* 5:263–268
- Ambraseys NN (2001d) The earthquake of 1509 in the Sea of Marmara, Turkey, revisited. *Bull Seismol Soc Am* 91:1397–1416
- Ambraseys NN (2002) The seismic activity of the Marmara Sea region over the last 2000 years. *Bull Seismol Soc Am* 92:1–18
- Ambraseys NN (2006) Comparison of frequency of occurrence of earthquakes with slip rates from long-term seismicity data: the cases of Gulf of Corinth, Sea of Marmara and Dead Sea Fault Zone. *Geophys J Int* 165:516–526
- Ambraseys NN (2009) Earthquakes in the Mediterranean and Middle East, a multidisciplinary study of seismicity up to 1900. Cambridge University Press, 947pp
- Ambraseys NN, Adams RD (1993) Seismicity of the Cyprus region. *Terra Nova* 5:85–94
- Ambraseys NN, Adams RD (1998) The Rhodes earthquake of 26 June 1926. *J Seismol* 2:267–292
- Ambraseys NN, Jackson JA (2000) Seismicity of the Sea of Marmara (Turkey) since 1500. *Geophys J Int* 141:F1–F6
- Ambraseys NN, Vogt J, Adams RD (1991) The Algerian earthquake of 24 June 1910: a case history. *Tectonophysics* 193:205–213
- Ambraseys NN, Melville CP, Adams RD (1994) The Seismicity of Egypt, Arabia and the Red Sea. Cambridge University Press, 181 pp
- Amstein S, Schwarz J (2004) Das Erdbeben vom 04. August 1940 in der Gegend von Göppingen. In: Seismische Gefährdungsberechnung und Einwirkungsbeschreibung, Schriften der Bauhaus-Universität Weimar 116. Univ.-Verlag, Weimar, pp 19–34
- Arvidsson R, Gregersen S, Kulhánek O, Wahlström R (1991) Recent Kattégat earthquakes - evidence of active intraplate tectonics in southern Scandinavia. *Phys Earth Planet Inter* 67:275–287
- Arvidsson R, Wahlström R, Kulhánek O (1992) Deep-crustal earthquakes in the southern Baltic shield. *Geophys J Int* 108:767–777
- Baker C, Hatzfeld D, Lyon-Caen H, Papadimitriou E, Rigo A (1997) Earthquake mechanisms of the Adriatic Sea and western Greece. *Geophys J Int* 131:559–594
- Barker JS, Langston CA (1981) Inversion of teleseismic body waves for the moment tensor of the 1978 Thessaloniki, Greece, earthquake. *Bull Seismol Soc Am* 71:1423–1444
- Battló J, Stich D, Macià R, Morales J (2010) Moment tensor inversion for the 5 July 1930 Montilla earthquake (southern Spain). *Seismol Res Lett* 81:724–731
- Benetatos C, Kiratzi A, Papazachos C, Karakaisis G (2004) Focal mechanisms of shallow and intermediate depth earthquakes along the Hellenic Arc. *J Geodyn* 37:253–296
- Benn N, Stange S, Brüstle W, Henk A, Stribny B (2006) Das Beben von Waldkirch am 5.12.2004. DGG Jahrestagung, Berlin, Germany (Poster)
- Bernardi F, Braunmiller J, Giardini D (2005) Seismic moment from regional surface-wave amplitudes: applications to digital and analog seismograms. *Bull Seismol Soc Am* 95:408–418
- Bezzeghoud M, Borger JB (2003) Focal mechanisms of earthquakes in Portugal. *Física de la Tierra* 15:229–245
- Bird P (2003) An updated digital model of plate boundaries. *Geochem Geophys Geosyst* 4:1027. doi:10.1029/2001GC000252
- Boborikin AM, Gareckij RG, Emeljanow AP, Cildvee ChCh, Cuvejedis PI (1993) Sowremennoye sostoyaniye seismitsheskich nablyudeniya i ich obobshtsheniya. *Semletryasseniya Belarussi I Pribaltiki*, Minsk, Belorussia, pp 29–40
- Bollinger GA, Chapman MC, Sibol MS (1993) A comparison of earthquake damage areas as a function of magnitude across the United States. *Bull Seismol Soc Am* 83:1064–1080
- Borges JF, Bezzeghoud M, Buforn E, Pro C, Fitas A (2007) The 1980, 1997 and 1998 Azores earthquakes and some seismotectonic implications. *Tectonophysics* 435:37–54
- Braunmiller J, Deichmann N, Giardini D, Wiemer S, SED Magnitude Working Group (2005) Homogeneous moment-magnitude calibration in Switzerland. *Bull Seismol Soc Am* 95(1):58–74
- BRGM-EDF-IRSN (2010) Base de données SisFrance des séismes historique en France. Bureau de recherche géologique et minière, Paris, France (www.sisfrance.net)
- Buforn E, Udías A, Madariaga R (1991) Intermediate and deep earthquakes in Spain. *Pure Appl Geophys* 136:375–393
- Buforn E, Benito B, Sanz de Galdeano C, del Fresno C, Muñoz D, Rodriguez I (2005) Study of the damaging earthquakes of 1911, 1999, and 2002 in the Murcia, southeastern Spain, region: seismotectonic and seismic-risk implications. *Bull Seismol Soc Am* 95:549–567
- Bungum H, Lindholm C, Dahle A (2003) Long-period ground-motions for large European earthquakes, 1905–1992, and comparisons with stochastic predictions. *J Seismol* 7:377–396

- Bungum H, Lindholm C, Olesen O (2010) A review of the epicenter location of some larger historical earthquakes in Norway. SHARE project report, NORSAR, November 2010, 13pp
- Burton PW, Xu Y, Qin C, Tselentis G-A, Sokos E (2004) A catalogue of seismicity in Greece and the adjacent areas for the twentieth century. *Tectonophysics* 390:117–127, /+ Data file/
- Byrkjeland U, Bungum H, Eldholm O (2000) Seismotectonics of the Norwegian continental margin. *J Geophys Res* 105:6221–6236
- Camelbeeck T (2009) Data file of Belgian earthquakes. Observatoire Royale du Belgique, Brussels, Belgium
- Camelbeeck T, van Eck T, Pelzing R, Ahorner L, Loohuis J, Haak HW, Hoang-Trong P, Hollnack D (1994) The 1992 Roermond earthquake, the Netherlands, and its aftershocks. *Geol Mijnbouw* 73:181–197
- Camelbeeck T, Knuts E, Sabbe A, Alexandre P (2010) The earthquake of February 23, 1828 in central Belgium: new historical data and damages in the architecture inheritance. Abstracts of the European Seismological Commission 32nd General Assembly, September 6–10, 2010, Montpellier, France, p 59
- Cara M, Alasset P-J, Sira C (2008) Magnitude of historical earthquakes from macroseismic data to seismic waveform modelling: application to the Pyrenees and a 1905 earthquake in the Alps. In: Fréchet J, Meghraoui M, Stucchi M (eds) Historical seismicity, interdisciplinary studies of past and recent earthquakes, Springer, 369–384
- Carrilho FJR, Nunes JAC, Pena JOA (2004) Catálogo Sísmico de Portugal Continental e Região Adjacente para o Período 1970–2000. Ministério da Ciência, Inovação e Ensino Superior, Instituto de Meteorologia, Divisão de Sismologia, 221 955/05, 227pp /+ Data file since 1961/
- Chan C-H, Grünthal G (2010) Hybrid zoneless probabilistic seismic hazard assessment: test and first application to Europe and the Mediterranean. Final report of NETWORK of Research Infrastructures for European Seismology (NERIES), Subproject JRA2 “Real time hazard tools”, Task A “The living Euro-Med earthquake hazard”
- Chevrot S, Sylvander M, Delouis B (2011) A preliminary catalogue of moment tensors for the Pyrenees. *Tectonophysics*. doi:10.1016/j.tecto.2011.07.011
- CPTI Working Group (2004) Catalogo parametrico dei terremoti italiani, versione 2004 (CPTI04). Ist Naz Geofis Vulc, Milan, Italy (<http://emidius.mi.ingv.it/CPTI04/>)
- CPTI Working Group (2008) Catalogo parametrico dei terremoti italiani, versione 2008 (CPTI08). Ist Naz Geofis Vulc, Milan, Italy
- Dewey JW (1990) The 1954 and 1980 Algerian earthquakes: implications for the characteristic displacement model of fault behaviour. *Bull Seismol Soc Am* 81:446–467
- Dineva S, Battlo J, Mihaylov D, van Eck T (2002) Source parameters of four strong earthquakes in Bulgaria and Portugal at the beginning of the 20th century. *J Seismol* 6:99–123
- Eisinger U, Gutdeutsch R (1994) The Villach Earthquake of December 4th, 1690 in the German Sources. Materials of the CEC Project “Review of Historical Seismicity in Europe”, pp 133–137
- EMSC (European Mediterranean Seismological Centre), www.emsc-csem.org/
- Engdahl ER, Villaseñor A (2002) Global seismicity: 1900–1999. In: Lee WHK, Kanamori H, Jennings PC, Kisslinger C (eds) International handbook of earthquake & engineering seismology. Academic, Part A, pp 665–690
- Ercolani E, Bernardini F, Camassi R, Caracciolo C, Castelli V (2010) History repeating itself: The recurrent seismic damage of L’Aquila landmarks. Abstracts of the European Seismological Commission 32nd General Assembly, September 6–10, Montpellier, France, p 155
- Fäh D, Giardini D, Bay F, Bernardi F, Braunmiller J, Deichmann N, Furrer M, Gantner L, Gisler M, Isenegger D, Jimenez MJ, Kästli P, Koglin R, Masciadri V, Rutz M, Scheidegger C, Schibler R, Schorlemmer D, Schwarz-Zanetti G, Steimen S, Sellami S, Wiemer S, Wössner J (2003) Earthquake catalogue of Switzerland (ECOS) and the related macroseismic database. *Eclogae Geol Helv* 96:219–236. Available at http://histserver.ethz.ch/simplequery_e.html (up to 2000)
- Fäh D, Giardini D, Kästli P, Deichmann N, Gisler M, Schwarz-Zanetti G, Alvarez-Rubio S, Sellami S, Edwards B, Allmann B, Bethmann F, Wössner J, Gassner-Stamm G, Fritsche S, Eberhard D (2011) ECOS-09 Earthquake catalogue of Switzerland release 2011 report and database. Public catalogue 17.4.2011, Swiss Seismological Service ETH Zurich, Report SED/RISK/R/001/20110417
- Feldman L, Amrat, A-Q (2007) Data file of historical earthquakes. GII Israel and NRA Jordan
- FENCAT (2009) Data file of earthquakes in northern Europe. Institute of Seismology, University of Helsinki, Helsinki, Finland (www.seismo.helsinki.fi/english/bulletins/catalog_northeurope.html)
- Fischer J, Grünthal G, Schwarz J (2001) Das Erdbeben vom 7. Februar 1839 in der Gegend von Unterriexingen. Thesis, Wissenschaftliche Zeitschrift der Bauhaus-Universität Weimar 1/2:8–30
- Fitzko F, Sudadolc P, Aoudia A, Panza GF (2005) Constraints on the location and mechanism of the 1511 Western-Slovenia earthquake from active tectonics and modeling of macroseismic data. *Tec-*

- tonophysics 404:77–90. doi:10.1016/j.tecto.2005.05.003
- Fréchet J, Thouvenot F, Frogneux M, Deichmann N, Cara M (2011) The M_w 4.5 Vallorcine (French Alps) earthquake of 8 September 2005 and its complex aftershock sequence. *J Seismol* 15:43–58
- Galanopoulos AG, Delibasis ND (1965) Seismic activity in the Cyprus area. *Prakt Acad Athens* 40:386–405
- Georisk (2009) Data file of Hungarian earthquakes. GeoRisk Ltd, Budapest, Hungary /for 2006 and on/ (www.georisk.hu)
- Gisler M, Fäh D, Schibler R (2004) Revising macroseismic data in Switzerland: the December 20, 1720 earthquake in the region of Lake Constance. *J Seismol* 8:179–192
- Glavatović B (2009) MSO BALKAN Catalogue. Montenegro Seismological Observatory, Podgorica, Montenegro, Data file
- Glavcheva R (2004) State-of-the-art of historical earthquake investigation in Bulgaria. *Ann Geophys* 47:705–721
- Goded T, Buform E, Muñoz D (2008) The 1494 and 1680 Málaga (southern Spain) earthquakes. *Seimol Res Lett* 79:707–715
- Godzikovskaya AA (2001) The catalogue of the Caucasus earthquakes $M \geq 4$ ($k \geq 11$) from ancient times to 2000. World Data Center for Solid Earth Physics, Geophysical Center, Russian Academy of Sciences, Moscow, Russia (zeus.wdcb.ru/wdcb/sep/caucasus/welcomen.html)
- Grünthal G (1988) Erdbebenkatalog des Territoriums der Deutschen Demokratischen Republik und der angrenzenden Gebiete von 823 bis 1984. Akademie der Wissenschaften der DDR, Zentralinstitut für Physik der Erde 99, 38pp + Appendix, 139pp
- Grünthal G (1991) Data file continuing the earthquake catalogue by Grünthal (1988) for the years 1985–1991. GeoForschungsZentrum Potsdam, Potsdam, Germany
- Grünthal G (2005) Ein Schadenerdbeben am 19. Januar 1619 im Taunus? *Mainz Naturwiss Arch* 43:29–38
- Grünthal G, Fischer J (1998a) Die Rekonstruktion des “Torgau”-Erdbebens vom 17. August 1553. *Brandenburgische Geowiss Beitr* 5(2):43–60
- Grünthal G, Fischer J (1998b) A basic earthquake catalogue and a database for the evaluation of long-term seismology and seismic hazard (BEECD). App. D2 - Investigation Report of GeoForschungsZentrum Potsdam, BEECD - Final Report - Appendices D, 3–10
- Grünthal G, Fischer J (1999) Zwei vermeintliche Schadenbeben in den Jahren 1565 und 1595 bei Zell an der Mosel. *Mainz Naturwiss Arch* 37:12–19
- Grünthal G, Fischer J (2002) Irrtümliche Schadenbeben vom 20. Dezember 1777 und am 28. Januar 1778 in der Gegend von Feldkirche im Breisgau. *Mainz Naturwiss Arch* 40:89–94
- Grünthal G, Meier R (1995) Das “Prignitz”-Erdbeben von 1409. *Brandenburger Geowiss Beitr* 2(2):5–27
- Grünthal G, Schwarz J (2001) Reinterpretation der Parameter des Mitteldeutschen Bebens von 1872 und Ableitung von Erdbebenszenarien für die Region Ostthüringen. Thesis, Wissenschaftliche Zeitschrift der Bauhaus-Universität Weimar 1/2:32–48
- Grünthal G, Wahlström R (2003) An M_w based earthquake catalogue for central, northern and northwestern Europe using a hierarchy of magnitude conversions. *J Seismol* 7:507–531
- Grünthal G, Fischer J, Vogt J (1999) Neue Erkenntnisse zu angeblichen Schadenbeben im Raum Mainz im 15. Jahrhundert. *Mainz Naturwiss Arch* 37:1–11
- Grünthal G, Stromeier D, Kind R, Wylegalla K, Wahlström R, Yuan X, Bock G (2008) The M_w 3.1–4.7 earthquakes in the southern Baltic Sea and adjacent areas in 2000, 2001 and 2004. *J Seismol* 12:413–429
- Grünthal G, Wahlström R, Stromeier D (2009a) (GWS09) The unified catalogue of earthquakes in central, northern and northwestern Europe (CENEC) - updated and expanded to the last millennium. *J Seismol* 13:517–541. doi:10.1007/s10950-009-9154-2
- Grünthal G, Stromeier D, Wahlström R (2009b) Harmonization check of M_w within the central, northern and northwestern European earthquake catalogue (CENEC). *J Seismol* 13:613–632. doi:10.1007/s10950-008-9144-9
- Grünthal G, Hakimhashemi A, Schelle H, Bosse C, Wahlström R (2009c) The long-term temporal behaviour of the seismicity of the Dead Sea Fault Zone and its implication for time-dependent seismic hazard assessments. Scientific Technical Report STR 09/09, GFZ German Research Centre for Geosciences, Potsdam, p 45
- Grünthal G, Arvidsson R, Bosse C (2010) Earthquake model for the European-Mediterranean region for the purpose of GEM1. Scientific Technical Report 10/04, GFZ German Research Centre for Geosciences, Potsdam, p 38
- Guidoboni E, Comastri A (1997) The large earthquake of 8 August 1303 in Crete: seismic scenario and tsunami in the Mediterranean area. *J Seismol* 1:55–72
- Guidoboni E, Comastri A (2005) Catalogue of earthquakes and tsunamis in the Mediterranean area from the 11th to the 15th century. *Inst Naz Geofis Vulc*, 1037pp

- Guidoboni E, Comastri A, Traina G (1994) Catalogue of ancient earthquakes in the Mediterranean area up to the 10th century. Ist Naz Geofis, Rome, Italy, 504 pp
- Gutdeutsch R, Hammerl Ch, Kaiser D (1999) Neubewertung der größten Erdbeben im nördlichen Oberrheingraben seit dem Jahr 858. Deutsche Geophysikalische Gesellschaft Jahrestagung, Abstracts, p 165
- Gutenberg B, Richter CF (1942) Earthquake magnitude, intensity, energy, and acceleration. Bull Seismol Soc Am 32:163–191
- Guterch B, Lewandowska-Marciniak H (2002) Seismicity and seismic hazard in Poland. Folia Quaternaria 73:85–99
- Gutscher M-A, Baptista MA, Miranda JM (2006) The Gibraltar Arc seismogenic zone (part 2): constraints on a shallow east dipping fault plane source for the 1755 Lisbon earthquake provided by tsunami modeling and seismic intensity. Tectonophysics 426:153–166
- Hainzl S, Kraft T, Wassermann J, Igel H, Schmedes E (2006) Evidence for rainfall-triggered earthquake activity. Geophys Res Lett 33:L19303
- Hakimhashemi A, Grünthal G (2012) A statistical method for estimating catalog completeness applicable to long-term nonstationary seismicity data. Bull Seismol Soc Am (in press)
- Hamdache M, Peláez JA, Talbi A, López Casado C (2010) A unified catalog of main earthquakes for Northern Algeria from 856 to 2008. Seismol Res Lett 81:732–739, /+ Data file also for smaller events/
- Hammerl Ch (2011) Historische Erdbebenforschung in Tirol im Rahmen des Interreg IV Projektes Hareia - historical and recent earthquakes in Italy and Austria. 12. D-A-CH Tagung - Erdbeben und Baudynamik, Hannover, Germany, 15–16 September 2011:37–48
- Hammerl C, Lenhardt W (1997) Erdbeben in Österreich. Leykam Buchverlagsgesellschaft mbH, Graz, p 191
- Hanks TC, Kanamori H (1979) A moment magnitude scale. J Geophys Res 84:2348–2350
- Harbi A, Peresan A, Panza GF (2010) Seismicity of Eastern Algeria: a revised and extended earthquake catalogue. Nat Hazards. doi:10.1007/s11069-009-9497-6
- Harbi A, Meghraoui M, Maouche S (2011) The Djidjelli (Algeria) earthquakes of 21 and 22 August 1856 (I_0 VIII, IX) and related tsunami effects Revisited. J Seismol 15:105–129
- Harvard Central Moment Tensor Solutions. Harvard University, Cambridge, MA, USA. (www.globalcmr.org/CMTsearch.html)
- Herak D (1995) Razdioba brzina prostornih valova potresa i seizmicnost sireg podruca Dinare (Distribution of bodywave velocities and seismicity of the greater Dinara Mt. region). Ph D dissertation, University of Zagreb, Zagreb, Croatia (in Croatian with English abstract)
- Herak M, Herak D, Markušić S (1996) Revision of the earthquake catalogue and seismicity of Croatia, 1908–1992. Terra Nova 8:86–94, /+ Data file until 2004/
- Hinzen KG (2005) Ground motion parameters of the July 22, 2002 M_L Alsdorf (Germany) earthquake. Boll Geofis Teor Appl 46:303–318
- Houtgast G (1995) Aardbevingen in Nederland. Koninklijk Nederlands Meteorologisch Instituut, De Bilt, The Netherlands 179, 166pp
- IGC (2009a) Atlas sísmic de Catalunya. Institut Geològic de Catalunya
- IGC (2009b) Butlletins sismològics anuals. Institut Geològic de Catalunya
- IGN (2005) Earthquake catalogue of Iberia. Instituto Geográfico Nacional-Spain, Madrid, Spain
- IGN (2010) Earthquake catalogue of Iberia. Instituto Geográfico Nacional-Spain, Madrid, Spain; M_w from IGN/EMSC are also listed under this notation
- IMO (2007a) Data file of large Icelandic earthquakes up to 1990. Icelandic Meteorological Office, Reykjavik, Iceland (<http://hraun.vedur.is/ja/ymislegt/storskjalf.html>)
- IMO (2007b) Data file of Icelandic earthquakes with $M_L \geq 3$ from 1991 on. Icelandic Meteorological Office, Reykjavik, Iceland (<http://hraun.vedur.is/cgi-bin/sellib>)
- INFP (2009) Data file of Romanian earthquakes. National Institute for Earth Physics, Bucharest, Romania (www-old.infp.ro/catal.php)
- INGV (2007) Data file of Italian earthquakes. Ist Naz Geofis Vulc, Milan, Italy
- ISC bulletins International Seismological Centre (previously International Seismological Summary) bulletins. Newbury (previously Edinburgh), United Kingdom (www.isc.ac.uk/search/index.html)
- Jiménez-Munt I, Negrodo AM (2003) Neotectonic modelling of the western part of the Africa-Eurasia plate boundary: from the Mid-Atlantic ridge to Algeria. Earth Planet Sci Lett 205:257–271
- Kalafat D, Kekovali K, Günes Y, Yilmazer M, Kara M, Deniz P, Berberoğlu M (2009) A catalogue of source parameters of moderate and strong earthquakes for Turkey and its surrounding area (1938–2008). Boğaziçç Üniversitesi Report, Istanbul, Turkey
- Kalafat D, Güneş Y, Kara M, Deniz P, Kekovali K, Sadi Kuleli H, Gülen L, Yilmazer M, Özel NM (2010) A revised and extended earthquake catalogue for Turkey since 1900 ($M \geq 4.0$). Kandilli Observatory, Istanbul, Turkey (<http://www.koeri.boun.edu.tr/sismo/Mudim/katalog.asp>)
- Kárník V, Michal E, Molnár A (1957) Erdbeben-

- katalog der Tschechoslowakei bis zum Jahre 1956. Trav de l'Institut Géophys de l' Acad Tchecoslovaque des Sci Prague Czechoslovakia 69:411–598
- Khair K, Karakaisis GF, Papadimitriou EE (2000) Seismic zonation of the Dead Sea Transform Fault area. *Ann Geofis* 43:61–79
- Kiratzi A, Louvari E (2003) Focal mechanisms of shallow earthquakes in the Aegean Sea and the surrounding lands determined by waveform modeling: a new database. *J Geodyn* 36:251–274
- Klinger Y, Rivera L, Haessler H, Maurin J-C (1999) Active faulting in the Gulf of Aqaba: new knowledge from the M_w 7.3 earthquake of 22 November 1995. *Bull Seismol Soc Am* 89:1025–1036
- KNMI (2009) Data file of Dutch earthquakes. Het Koninklijk Nederlands Meteorologisch Instituut, De Bilt, The Netherlands (www.knmi.nl/seismologie/tectonische-bevingen-nl) and (www.knmi.nl/seismologie/tectonische-bevingen-regio)
- Kondorskaya NW, Shebalin NW (1982) New Catalogue of strong earthquakes in the USSR from ancient times through 1977. World Data Center A for Seismology SE-31, Boulder, Colorado, USA, p 608
- Kondorskaya NV, Ulomov VI (1999) Special Earthquake Catalogue of Northern Eurasia From Ancient Times Through 1995 (SECNE). Joint Institute of Physics of the Earth (JIPE), Russian Academy of Sciences, Moscow, Russia
- Konstantinou KI (2010) Crustal rheology of the Santorini-Amorgos zone: implication for the nucleation depth and rupture extent of the 9 July 1956 Amorgos earthquake, southern Aegean. *J Geodyn* 50:400–409
- Kunze Th (1986) Ausgangsparameter für die Abschätzung der seismischen Gefährdung in Mitteleuropa. *Jahresber Mitt Oberrhein Geol Ver Stgt* 68:225–240
- Labak P (1998) Data file of Slovak earthquakes. Geophysical Institute, Slovak Academy of Sciences, Bratislava, Slovakia
- LDG (2005) Data file of French earthquakes 1962–2004. Laboratoire de Détection et de Géophysique, Bruyères-le-Châtel, France
- LDG (2011) Data file of French earthquakes from 1962 and on. Laboratoire de Détection et de Géophysique, Bruyères-le-Châtel, France
- Lenhardt W (1996) Data file of Austrian earthquakes. Zentralanstalt für Meteorologie und Geodynamik, Hauptabteilung für Geophysik, Vienna, Austria /until 1995/
- Lenhardt W, Hammerl C (2010) Historical earthquakes in Lower Austria. Abstracts of the European Seismological Commission 32nd General Assembly, September 6-10, 2010, Montpellier, France, p 153 (plus presentation notes)
- Leydecker G (1986) Erdbebenkatalog für die Bundesrepublik Deutschland mit Randgebieten für die Jahre 1000–1981. *Geol Jb* E36:83
- Leydecker G (1996) Data file updating and continuing (until 1994) the earthquake catalogue by Leydecker (1986). Bundesanstalt für Geowissenschaften und Rohstoffe, Hannover, Germany (GER-CAT-FORMAT-16-11-2005.txt at www.bgr.de/quakecat)
- Louvari E (2000) A detailed tectonic study in the Aegean Sea and the surrounding area with emphasis on the information obtained from microearthquakes. PhD thesis, Aristotle University, Thessaloniki, Greece, 373pp
- Louvari E, Kiratzi A (2001) Source parameters of the September 7, 1999 Athens (Greece) earthquake from teleseismic data. *J Balkan Geophys Soc* 43(3):51–60
- Louvari E, Kiratzi A, Papazachos B (1999) The Cephalonia transform fault and its continuation to western Lefkada Island. *Tectonophysics* 308:223–236
- Louvari E, Kiratzi A, Papazachos B, Hatzidimitriou P (2001) Fault plane solutions determined by waveform modeling confirm tectonic collision in eastern Adriatic. *Pure Appl Geophys* 158:1613–1638
- Martínez Solares JM (2003) Historical seismicity of the Iberian Peninsula. *Física de la Tierra* 15:13–28
- Meidow H (1995) Rekonstruktion und Reinterpretation von historischen Erdbeben in den nördlichen Rheinlanden unter Berücksichtigung der Erfahrungen bei dem Erdbeben von Roermond am 13. April 1992. PhD thesis, University of Köln, 305pp
- Meidow H (2001) Das Erdbeben vom 13. April 1767 bei Rotenburg a. d. Fulda. *Deut Geophys Ges Mitt* 4:4–15
- Meier R, Grünthal G (1992) Eine Neubewertung des Erdbebens vom 3. September 1770 bei Alfhäusen (Niedersachsen). *Osnabrücker Naturwiss Mitt* 18:67–80
- Mezcua J (2002) Curso de ingeniería sísmica. Universidad Politécnica de Madrid, 327pp
- Milutinović Z (1998) Seismic hazard and countermeasures in the city of Skopje (course). Inst Earthq Eng and Eng Seismology, Univ. St. Cyrille and Methodius, Skopje, Macedonia
- Musson R (1994) Earthquake catalogue of Great Britain and surroundings. British Geological Survey, Edinburgh, United Kingdom, Technical Report WL/94/04, Seismology Series, 99 pp
- Musson R (2006) Data file of earthquakes with $M_L \geq 3$ in Great Britain and surroundings. British Geological Survey, Edinburgh, United Kingdom
- Musson RMW and Sargeant SL (2007) BGS UK

- earthquake database, Eurocode 8 seismic hazard zoning maps for the UK. British Geological Survey Technical Report CR/07/125
- NEIC bulletins US National Earthquake Information Center bulletins 1917–1999. US Geological Survey, World Data Center A for Seismology, Boulder, Colorado, USA (<http://neic.usgs.gov/neis/epic>)
- Neunhöfer H, Grünthal G (1995) Das Erdbeben vom 7. April 1847 im Thüringer Wald. *Z Geol Wiss* 23:277–286
- Nikonov AA (1992) Distribution of maximum observed tremors and zones of possible occurrence of earthquakes in Estonia. *Izv Earth Phys* 28:430–434
- Nunes JC, Forjaz VH, Oliveira CS (2004) Catálogo Sísmico da Região dos Açores. CD-Rom ISBN 972-8612-17-6
- OGS (2006) The Bovec (SLO) earthquake (12.04.1998). Centro di Ricerche Sismologiche (CRS), L'Istituto Nazionale di Oceanografia e di Geofisica Sperimentale (OGS), Udine, Italy. Available at <http://www.crs.inogs.it>
- Olivera C, Redondo E, Lambert J, Riera-Melis A, Roca A (2008) Review of historical earthquakes in the lower Middle Ages: Earthquakes of the XIV and XV centuries in Catalonia (NE Spain). In: Fréchet J, Meghraoui M, Stucchi M (eds) *Historical seismicity, interdisciplinary studies of past and recent earthquakes*, Springer, 209–230
- Oncescu MC, Marza VI, Rizescu M, Popa M (1999) The Romanian earthquake catalogue between 984–1997 /+ Data file until September 1998/. In: Wenzel F, Lungu D (eds) *Contributions from the First International Workshop on Vrancea Earthquakes*, Bucharest, Romania, November 1–4, 1997, Kluwer Academic Publishers, pp 43–48
- ORB (2007) Data files of Belgian earthquakes. Observatoire Royale du Belgique, Brussels, Belgium (<http://seismologie.oma.be/index.php?>)
- Pagaczewski J (1972) Catalogue of earthquakes in Poland in 1000–1970 years. Publications of the Institute of Geophysics, Polish Academy of Sciences, Warsaw, Poland 51, 61 pp
- Panagiotou M (2000) Regional stress tensor inversion in central Greece. MSc thesis, Aristotle University, Thessaloniki, Greece
- Papadopoulos GA, Daskalaki E, Fokaefs A, Giraleas N (2007) Tsunami hazards in the Eastern Mediterranean: strong earthquakes and tsunamis in the East Hellenic arc and trench system. *Nat Hazards Earth Syst Sci* 7:57–64
- Papaoannou, ChA (2001) A model for the shallow and intermediate depth seismic sources in the Eastern Mediterranean region. *Boll Geof Teor Appl* 42:57–73 /+ Data file until 2008/
- Papazachos BC, Papaioannou ChA (1999) Lithospheric boundaries and plate motions in the Cyprus area. *Tectonophysics* 308:193–204
- Papazachos BC, Comninakis PE, Karakaisis GF, Karakostas BG, Papaioannou ChA, Papazachos CB, Scordilis EM (2003) A catalogue of earthquakes in Greece and surrounding area for the period 550BC–1999. In: Lee WHK, Kanamori H, Jennings PC, Kisslinger C (eds) *International Handbook of Earthquake and Engineering Seismology IASPEI, Part B, CD #3*, Academic Press
- Papazachos BC, Comninakis PE, Scordilis EM, Karakaisis GF, Papazachos CB (2009) A catalogue of earthquakes in Greece and surrounding area for the period 1901–2008 Publication of the Geophysics Laboratory, University of Thessaloniki http://geophysics.geo.auth.gr/ss/catalogs_en.html
- Peláez JA, Chourak M, Tadili BA, Brahim LA, Hamdache M, López Casado C, Martínez Solares JM (2007) A catalog of main Moroccan earthquakes from 1045 to 2005. *Seismol Res Lett* 78:614–621
- Perea H (2009) The Catalan seismic crisis (1427 and 1428; NE Iberian Peninsula): geological sources and earthquake triggering. *J Geodyn* 47:259–270
- Pettenati F, Sirovich L, Bungum H, Schweitzer J (2005) Source inversion of regional intensity patterns of five earthquakes from south-western Norway. *Boll Geofis Teor Appl* 46:111–134
- Pino NA, Piatanesi A, Valensise G, Boschi E (2009) The 28 December 1908 Messina Straits earthquake (M_w 7.1): a great earthquake throughout a century of seismology. *Seismol Res Lett* 80:243–259
- Pondrelli S, Morelli A, Ekström G, Mazza S, Boschi E, Dziewonski AM (2002) European-Mediterranean regional centroid-moment tensors: 1997–2000. *Phys Earth Planet Inter* 130:71–101
- Pondrelli S, Morelli A, Ekström G (2004) European-Mediterranean regional centroid moment tensor catalog: solutions for years 2001 and 2002. *Phys Earth Planet Inter* 145:127–147
- Pondrelli S, Salimbeni S, Morelli A, Ekström G, Boschi E (2007) European-Mediterranean regional centroid moment tensor catalogue: solutions for years 2003 and 2004. *Phys Earth Planet Inter* 164:90–112
- Pondrelli S, Salimbeni S, Morelli A, Ekström G, Postpischl L, Vannucci G, Boschi E (2011) European-Mediterranean regional centroid moment tensor catalog: solutions for 2005–2008. *Phys Earth Planet Inter* 185:74–81
- Prinz D, Hollnack D, Wohlenberg J (1994) The seismic activity near Aachen following the 1992 Roermond earthquake, the Netherlands. *Geol Mijnbouw* 73:235–240
- Roumelioti Z, Kiratzi A, Benetatos Ch (2010) The instability of the M_w and M_L comparison for earthquakes in Greece for the period 1969 to 2007. *J Seismol* 14:309–337
- Roumelioti Z, Kiratzi A, Benetatos Ch (2011) Time-

- domain moment tensors for shallow ($h \leq 40$ km) earthquakes in the broader Aegean Sea for the years 2006 and 2007: the database of the Aristotle University of Thessaloniki. *J Geodyn* 51:179–189
- Rueda J, Mezcuca J (2002) Estudio del Terremoto de 23 de Septiembre de 2001 en Pego (Alicante). Obtención de una relación m_{Lg} - M_w para la Península Ibérica. *Rev Soc Geol Esp* 15:159–173
- Sbeinati MR, Darawcheh R, Mouty M (2005) The historical earthquakes of Syria: an analysis of large and moderate earthquakes from 1365 BC to 1900 AD. *Ann Geophys* 48:347–435
- Schellbach K, Grünthal G (2012) Katalog der Erdbeben Zentraleuropas 1000-1299 - eine kritische Analyse mittelalterlicher Quellen. GFZ German Research Centre for Geosciences, Potsdam, internal report
- Schenkova Z (1993) Earthquake catalogue for Czechoslovakia. *Pure Appl Geophys* 119:1077–1092, /+ Data file until 1984/
- Schneider G (1998) Neue Bemessungsspektren für Deutschland. In: DIN Symposium 21.01.1998, Leinfelden, Germany
- Shaw B, Ambraseys NN, England PC, Floyd MA, Gorman GJ, Higham TFG, Jackson JA, Nocquet J-M, Pain CC, Piggott MD (2008) Eastern-Mediterranean tectonics and tsunami hazard inferred from the AD 365 earthquake. *Nat Geosci* 1:268–276
- Shebalin NV, Leydecker G, Mokrushina NG, Tatevossian RE, Erteleva OO, Vassiliev VYu (1998) Earthquake catalogue for central and southeastern Europe 342 BC–1990 AD. European Commission, Report ETNU CT 93-0087, Brussels, Belgium
- Sørensen M, Spada M, Babeyko A, Wiemer S, Grünthal G (2012) Probabilistic tsunami hazard in the Mediterranean Sea. *J Geophys Res* 117: B01305
- Stich D, Battló J, Morales J, Macià R, Dineva S (2005) Source parameters of the $M_w=6.1$ Adra earthquake (southern Spain). *Geophys J Int* 155:539–546
- Stich D, Martin R, Morales J (2010) Moment tensor inversion for Iberia-Maghreb earthquakes 2005–2008. *Tectonophysics* 483:390–398. doi:10.1016/j.tecto.2009.11.006
- Stromeyer D, Grünthal G, Wahlström R (2004) Chi-square regression for seismic strength parameter relations, and their uncertainties, with applications to an M_w based earthquake catalogue for central, northern and northwestern Europe. *J Seismol* 8:143–153
- Sulstarova E, Koçiu S, Muço B, Peçi V (2000) Catalogue of earthquakes in Albania with $M_s \geq 4.5$ for the period 58-2000. Internal Report. Seismological Institute, Tirana, Albania
- Swiss Moment Tensor Solutions (SMTS). Moment tensor solutions from the Swiss Seismological Service. Swiss Seismological Service, Zurich, Switzerland (www.seismo.ethz.ch/mt)
- SZGRF (2010) Gräfenberg Seismological Central Observatory bulletins, Erlangen, Germany (www.szgrf.bgr.de/bulletins.html)
- Teves-Costa P, Battló J (2011) The 23 April 1909 Benavente earthquake (Portugal): macroseismic field revision. *J Seismol* 15:59–70
- Tibi R, Bock G, Xia Y, Baumbach M, Grosser H, Milkereit C, Karakisa S, Zünbül S, Kind R, Zschau J (2001) Rupture processes of the 1999 August 17 Izmit and November 12 Düzce (Turkey) earthquakes. *Geophys J Int* 144:F1–F7
- Tóth L, Mónus P, Zsíros T, Kiszely M, Czifra T (2006) Data file of Hungarian earthquakes. GeoRisk Ltd, Budapest, Hungary /for 2000-2005/ (www.georisk.hu)
- Tsikalas F, Faleide JI, Eldholm O (2012) The NE Atlantic conjugate margins. In: Bally AW, Roberts DG (eds) Phanerozoic Regional Geology of the World, Vol. 1, Elsevier, 900pp
- Turkish GSHAP catalogue (2000) Turkish catalogue of significant earthquakes provided for GSHAP. Available at Swiss Seismological Service, Swiss Federal Institute of Technology, Zurich, Switzerland (www.seismo.ethz.ch/gshap/turkey/seisgshap.prn)
- Uhrhammer RA, Loper SJ, Romanowicz B (1996) Determination of local magnitude using BDSN broadband records. *Bull Seismol Soc Am* 86:1314–1330
- Utsu K (2002) Relationships between magnitude scales. In: Lee WHK, Kanamori H, Jennings PC, Kisslinger C (eds) International Handbook of Earthquake & Engineering Seismology. Academic, Part A, pp 733–746
- Vannucci G, Tripone D, Palombo B, Ferrari G (2010) The Garfagnana (Italy) earthquake of 7th September 1920: Reassessment of the main seismological parameters. Abstracts of the European Seismological Commission 32nd General Assembly, September 6–10, Montpellier, France, p 52
- Verbeiren R, Camelbeeck Th, Alexandre P (1995) Data file of Belgian earthquakes. Observatoire Royale du Belgique, Brussels, Belgium
- Vilanova S, Fonseca J (2007) Probabilistic seismic-hazard assessment for Portugal. *Bull Seismol Soc Am* 97:1702–1717
- Vogt J (1991) Die Bebenfolge vom Mai 1733 im “Rheingebiet”. *Mainz Naturwiss Arch* 29:65–69
- Vogt J (1993a) Révision de la crise sismique rhénane de mai 1737. In: Stucchi M (ed) Materials of the CEC Project “Review of Historical Seismicity in Europe”, CNR Milan, pp 89–100
- Vogt J (1993b) Révision de la crise sismique nord-rhénane de novembre 1787. In: Stucchi M (ed) Materials of the CEC Project “Review of Histori-

- cal Seismicity in Europe”, CNR Milan, pp 237–241
- Vogt J (1996) Révision de quelques séismes rhénans (milieu du XVe-début du XVIIe siècle). *Rev d’Alsace* 122:265–276
- Vogt J, Grünthal G (1994) Die Erdbebenfolge vom Herbst 1612 im Raum Bielefeld-Ein bisher unberücksichtigtes Schadenbeben. *Geowissenschaften* 12:236–240
- Wahlström R, Grünthal G (1994) Seismicity and seismotectonic implications in the southern Baltic Sea area. *Terra Nova* 6:149–157
- Yilmazturk A, Burton PW (1999) Earthquake source parameters as inferred from body waveform modeling, southern Turkey. *J Geodyn* 27:469–499
- ZAMG (2009) Data file of Austrian earthquakes. Zentralanstalt für Meteorologie und Geodynamik, Hauptabteilung für Geophysik, Vienna, Austria
- Zedník J (2005) Catalogs of regional seismic events – Czech Regional Seismological Network. Geophysical Institute, Czech Academy of Sciences, Prague, The Czech Republic
- Zilberman E, Amit R, Porat N, Enzel Y, Avner U (2005) Surface ruptures induced by the devastating 1068 AD earthquake in the southern Arava valley, Dead Sea Rift, Israel. *Tectonophysics* 408:79–99
- Zitellini N, Gràcia E, Matias L, Terrinha P, Abreu MA, DeAlteriis G, Henriët JP, Dañobeitia JJ, Masson DG, Mulder T, Ramella R, Somoza L, Diez S (2009) The quest for the Africa-Eurasia plate boundary west of the Strait of Gibraltar. *Earth Planet Sci Lett* 280:13–50
- Živčić M (1993) Data file “Earthquake Catalogue of Slovenia” of the Seismology and Geology Office. Environmental Agency of the Republic of Slovenia, Ljubljana, Slovenia
- Zsíros T (1983) The Érmellék earthquake of 1834. *Acta Geodaet Geophys Montanist Hung* 18:129–134
- Zsíros T (1994) Data file of Hungarian earthquakes. Seismological Observatory, Geodetic and Geophysical Research Institute, Hungarian Academy of Sciences, Budapest, Hungary, /for 1987-1994/
- Zsíros T (1999) Data file of Hungarian earthquakes. Seismological Observatory, Geodetic and Geophysical Research Institute, Hungarian Academy of Sciences, Budapest, Hungary
- Zsíros T, Mónus P, Tóth L (1990) Hungarian earthquake catalogue (456-1986). Seismological Observatory, Geodetic and Geophysical Research Institute, Hungarian Academy of Sciences, Budapest, Hungary, p 182

Table 1 National and regional catalogues and data files and their associated polygons

| Country/area of main application | Catalogues | Notation | Associated polygons |
|----------------------------------|--|-----------------------------|--|
| Albania | Sulstarova et al. (2000) | Sul | Albania (AL) |
| Algeria | Harbi et al. (2010) eastern part; Hamdache et al. (2010) northern part | HPP10; Ham | Algeria (DZ), Tunisia (TN); Ham also Morocco (MA) |
| Austria | Lenhardt (1996); ZAMG (2009) | ZAMG; ZAMG09L | Austria (A) |
| Azores Islands | Nunes et al. (2004) | NFO | East Atlantic Ocean and Canaries (AOC) |
| The Balkans | Glavotović (2009) | Gla | Albania, Bosnia/Herzegovina (BIH), Bulgaria (BG), Croatia (CRO), Macedonia (MK), Serbia/Montenegro (YU), Slovenia (SLO) |
| Belgium, Luxembourg | Verbeiren et al. (1995); ORB (2007); Camelbeeck (2009) | ORB; ORB07; Cam | Belgium and Luxembourg (BL); ORB07 and Cam also Germany (D) western part |
| Belorussia | Boborikin et al. (1993) | Bob | Belorussia (BY), Fennoscandia (FEN) |
| Bulgaria | Glavcheva (2004) | Gleva | Bulgaria |
| The Caucasus | Godzikovskaya (2001) | God | Caucasus (CAU), Turkey (TR) east of 30.5°E |
| Central and south-eastern Europe | Shebalin et al. (1998) | She | Bulgaria, Macedonia |
| Croatia | Herak et al. (1996) | HHM | Croatia, Austria, Bosnia/Herzegovina, Macedonia, Slovenia, Serbia/Montenegro |
| Cyprus | Galanopoulos and Delibasis (1965); Ambraseys and Adams (1993); Papazachos and Papaioannou (1999); Papaioannou (2001) | GD; AA; PP; Pou | Cyprus (CY); PP; Pou also SE Mediterranean area (SEM) and Turkey east of 30.5°E |
| Czech Republic | Schenkova (1993); Zednik (2005) | CAS; GFU | Czech Republic (CZ) |
| Egypt, Arabia, Red Sea | Ambraseys et al. (1994) | AMA | SE Mediterranean area, Libya and western Egypt (LWE) |
| Estonia | Nikonov (1992) | Nik | Fennoscandia |
| Fennoscandia | Wahlström and Grünthal (1994) southern part; FENCAT (2009); | WG; FEN09 | Fennoscandia; FEN09 also North Atlantic Ocean and Iceland (AOI) |
| France | LDG (2005, 2011); BRGM-EDF-IRSN (2010) | LDG; LDG11; SisF10 | France (F), United Kingdom (UK); Spain (E) only when there is a corresponding IGC1, IGC2, or IGC10 entry in polygon F (see Iberian Peninsula entries) |
| Germany | Grünthal (1988, 1991); Leydecker (1986, 1996); SZGRF (2010) | Gru; Gru91; Ley; Ley96; GRF | Gru, Gru91: Germany and adjacent area, inside 49.6°N–54.8°N, 9.5°E–15.5°E Ley, Ley96: Germany outside this area, Austria, France; in 1992–1993 (Ley96) also inside this area GRF: Germany, Austria, Czech Republic, Poland |

Table 1 (continued)

| Country/area of main application | Catalogues | Notation | Associated polygons |
|----------------------------------|--|---------------------------------------|--|
| Greece | Papazachos et al. (2003) (Burton et al. 2004 used for focal depths); Papazachos et al. (2009); Roumelioti et al. (2010, 2011) | Pap; Pap09; RKB10; RKB11 | Greece (GR); Pap, Pap09, RKB10 also Albania, Macedonia, and Turkey west of 30.5°E; Pap, Pap09 also BG |
| Hungary | Zsiros et al. (1990); Zsiros (1994), Zsiros (1999); Tóth et al. (2006); Georisk (2009) | Zsi; Zsi94; Zsi99; Tot; Georisk | Hungary (H), Romania (RO), Ukraine (UA); Zsi99, Tot, Georisk also Slovakia (SK) |
| Iberian Peninsula | Martínez Solares (2003); IGN (2005, 2010); IGC (2009a, b) Catalonia; Carrilho F (personal communication, 2009) Portugal; Stuch et al. (2010) | MzS; IGN; IGN10; IGCI; IGC2; CNP; SMM | MzS: Spain IGN: Algeria, Morocco, Tunisia. Applied only if lat. <32°N or lon. >6°E, i.e., outside the area covered by the IGN10 catalogue |
| Iceland | IMO (2007a, b) | IMO; IMO07 | IGN10, SMM: Spain, Algeria, Morocco, Portugal (P) IGC1, IGC2: Spain |
| Italy | CPTI Working Group (2004, 2008); INGV (2007) | CPTI04; CPTI08; INGV | CNP: Portugal, Morocco, Spain North Atlantic Ocean and Iceland |
| The Levant | Khair et al. (2000); Abdallah et al. (2004); Sbeinati et al. (2005); Ambraseys (2006); Feldman and Amrat (2007) | KKP; AFS; SDM; Amb06; FA | Italy (I) SE Mediterranean area; KKP, SDM, FA also Turkey east of 30.5°E; AFS, FA also Cyprus |
| Libya | Ambraseys (1984, 1994) | Amb84; Amb94 | Libya and western Egypt |
| Mediterranean area | Guidoboni and Comastri (2005); Ambraseys (2009) | GC; Amb09 | Cyprus, SE Mediterranean area, Turkey east of 30.5°E |
| Morocco | Peláez et al. (2007) | Pel | Morocco, Algeria, Portugal, Spain |
| The Netherlands | Houtgast (1995); KNMI (2009) | Hou; KNMI09 | The Netherlands (NL) |
| Poland | Pagaczewski (1972); Guterch and Lewandowska-Marciniak (2002) | Pag; GLM | Poland (PL); GLM also Czech Republic |
| Romania | Oncescu et al. (1999); INFP (2009) | Onc; INFP | Romania, Bulgaria, Moldavia (MD), Serbia-Montenegro, Ukraine |
| Slovakia | Labak (1998) | Lab | Slovakia |
| Slovenia | Živčić (1993) | ZivS | Slovenia |
| Switzerland | Fäh et al. (2011) | ECOS-09 | Switzerland (CH), Austria; selected events in France and western Germany |
| Turkey | Turkish GSHAP Catalogue (2000); Ambraseys (2002); Kalafat et al. (2009, 2010) | TR-GSHAP; Amb02; Kal; KOERI | Turkey; TR-GSHAP only east of 30.5°E; Amb02 only west of 30.5°E; KOERI also SE Mediterranean area, Cyprus, and Ukraine |
| United Kingdom | Musson (1994, 2006); Musson and Sargeant (2007) | Mus; Mus06; MS | United Kingdom |
| The former USSR | Kondorskaya and Shebalin (1982); Kondorskaya and Ulomov (1999) | KSh; KU | Moldavia, Ukraine; KU also Turkey east of 30.5°E |

Table 1 (continued)

| Country/area of main application | Catalogues | Notation | Associated polygons |
|----------------------------------|---|-----------|---|
| Worldwide | ISC bulletins (ISS before 1964); NEIC bulletins | ISC; NEIC | North Atlantic Ocean and Iceland; ISC also Belorussia, the Caucasus, East Atlantic Ocean and the Canaries, Libya and western Egypt, and SE Mediterranean area |

Table 2 Special studies contributing to the Catalogue

| Notation | Special study |
|---------------|-----------------------------------|
| <i>AA98</i> | Ambraseys and Adams (1998) |
| <i>Aho83</i> | Ahorner (1983) |
| <i>AhoP</i> | Ahorner L, personal communication |
| <i>AJ00</i> | Ambraseys and Jackson (2000) |
| <i>AKC10</i> | Aktuğ et al. (2010) |
| <i>Alb04</i> | Albini (2004) |
| <i>Alt05</i> | Altinok et al. (2005) |
| <i>Alx08</i> | Alexandre et al. (2008) |
| <i>Alx90</i> | Alexandre (1990) ¹⁾ |
| <i>Amb01a</i> | Ambraseys (2001a) |
| <i>Amb01b</i> | Ambraseys (2001b) |
| <i>Amb01c</i> | Ambraseys (2001c) |
| <i>Amb01d</i> | Ambraseys (2001d) |
| <i>Amb97</i> | Ambraseys (1997) |
| <i>AP04</i> | Albini and Pantosti (2004) |
| <i>AP83</i> | Ahorner and Pelzing (1983) |
| <i>AP85</i> | Ahorner and Pelzing (1985) |
| <i>AR10</i> | Albini and Rovida (2010) |
| <i>Arv91</i> | Arvidsson et al. (1991) |
| <i>AS04</i> | Amstein and Schwarz (2004) |
| <i>AVA91</i> | Ambraseys et al. (1991) |
| <i>AWK92</i> | Arvidsson et al. (1992) |
| <i>Bak97</i> | Baker et al. (1997) |
| <i>Bat10</i> | Battlo' et al. (2010) |
| <i>BB03</i> | Bezzeghoud and Borger (2003) |
| <i>BBG05</i> | Bernardi et al. (2005) |
| <i>Ben04</i> | Benetatos et al. (2004) |
| <i>Ben06</i> | Benn et al. (2006) |
| <i>BLO10</i> | Bungum et al. (2010) |
| <i>Bor07</i> | Borges et al. (2007) |
| <i>Buf05</i> | Buform et al. (2005) |
| <i>BUM91</i> | Buform et al. (1991) |
| <i>Cam10</i> | Camelbeeck et al. (2010) |
| <i>Cam94</i> | Camelbeeck et al. (1994) |
| <i>Car03</i> | Cara (2003) |
| <i>CAS08</i> | Cara et al. (2008) |
| <i>CSD11</i> | Chevrot et al. (2011) |
| <i>Dew90</i> | Dewey (1990) |
| <i>Din02</i> | Dineva et al. (2002) |
| <i>EiG94</i> | Eisinger and Gutdeutsch (1994) |

Table 2 (continued)

| Notation | Special study |
|-----------------|---------------------------------------|
| <i>Erc10</i> | Ercolani et al. (2010) |
| <i>FGS01</i> | Fischer et al. (2001) |
| <i>Fit05</i> | Fitzko et al. (2005) |
| <i>Fre11</i> | Fréchet et al. (2011) |
| <i>GBM06</i> | Gutscher et al. (2006) |
| <i>GBM08</i> | Goded et al. (2008) |
| <i>GCT94</i> | Guidoboni et al. (1994) ²⁾ |
| <i>GF02b</i> | Grünthal and Fischer (2002) |
| <i>GF98a</i> | Grünthal and Fischer (1998a) |
| <i>GF98b</i> | Grünthal and Fischer (1998b) |
| <i>GF99</i> | Grünthal and Fischer (1999) |
| <i>GFS04</i> | Gisler et al. (2004) |
| <i>GFV99</i> | Grünthal et al. (1999) |
| <i>GHK99</i> | Gutdeutsch et al. (1999) |
| <i>GM95</i> | Grünthal and Meier (1995) |
| <i>Gru05</i> | Grünthal (2005) |
| <i>Gru08</i> | Grünthal et al. (2008) |
| <i>GruRA</i> | Grünthal G, renewed analysis |
| <i>GS01</i> | Grünthal and Schwarz (2001) |
| <i>Ham11</i> | Hammerl (2011) |
| <i>Hin05</i> | Hinzen (2005) |
| <i>HL97</i> | Hammerl and Lenhardt (1997) |
| <i>HMM11</i> | Harbi et al. (2011) |
| <i>KL03</i> | Kiratzí and Louvari (2003) |
| <i>Kli99</i> | Klinger et al. (1999) |
| <i>KMM57</i> | Kárník et al. (1957) |
| <i>Kon10</i> | Konstantinou (2010) |
| <i>Kun86</i> | Kunze (1986) |
| <i>LH10</i> | Lenhardt and Hammerl (2010) |
| <i>LK01</i> | Louvari and Kiratzí (2001) |
| <i>LKP99</i> | Louvari et al. (1999) |
| <i>Lou00</i> | Louvari (2000) |

Table 2 (continued)

| Notation | Special study |
|-----------------|-------------------------------------|
| <i>Lou01</i> | Louvari et al. (2001) |
| <i>Mei01</i> | Meidow (2001) |
| <i>Mei95</i> | Meidow (1995) |
| <i>MG92</i> | Meier and Grünthal (1992) |
| <i>Mil98</i> | Milutinović (1998) |
| <i>NG95</i> | Neunhöfer and Grünthal (1995) |
| <i>OGS06</i> | OGS (2006) |
| <i>Oli08</i> | Olivera et al. (2008) |
| <i>Pan00</i> | Panagiotou (2000) |
| <i>Per09</i> | Perea (2009) |
| <i>Pet05</i> | Pettenati et al. (2005) |
| <i>PHW94</i> | Prinz et al. (1994) |
| <i>Pin09</i> | Pino et al. (2009) |
| <i>Sch98</i> | Schneider (1998) |
| <i>SchP</i> | Schneider G, personal communication |
| <i>SG11</i> | Schellbach and Grünthal (2011) |
| <i>Sha08</i> | Shaw et al. (2008) |
| <i>Sti05</i> | Stich et al. (2005) |
| <i>TB11</i> | Teves-Costa and Batlló (2011) |
| <i>Tib01</i> | Tibi et al. (2001) |
| <i>Van10</i> | Vannucci et al. (2010) |
| <i>VF07</i> | Vilanova and Fonseca (2007) |
| <i>VG94</i> | Vogt and Grünthal (1994) |
| <i>Vog91</i> | Vogt (1991) |
| <i>Vog93a</i> | Vogt (1993a) |
| <i>Vog93b</i> | Vogt (1993b) |
| <i>Vog96</i> | Vogt (1996) |
| <i>VogP</i> | Vogt J, personal communication |
| <i>YB99</i> | Yilmazturk and Burton (1999) |
| <i>Zil05</i> | Zilberman et al. (2005) |
| <i>ZsiP</i> | Zsíros T, personal communication |

Table 3 Polygons and the hierarchy of catalogues to which they are associated for different time periods

| Polygon | Country/area | Time period | Local catalogue |
|---------|--|----------------|---|
| A | Austria | -1981 | ZAMG09L, ZAMG, Ley, Ley96, HHM, ECOS-09 |
| | | 1982-1993 | ZAMG09L, ZAMG, Ley96, HHM, ECOS-09 |
| | | 1994-1995 | ZAMG09L, ZAMG, GRF, ECOS-09 |
| | | 1996-2006 | ZAMG09L, GRF, ECOS-09 |
| AL | Albania | -1968 | Sul, Pap |
| | | 1969-1999 | RKB10, Sul, Pap |
| | | 2000-2006 | RKB10, Pap09, Gla |
| AOC | East Atlantic Ocean and the Canaries | -1998 | NFO, ISC |
| | | 1999-2006 | ISC |
| AOI | North Atlantic Ocean and Iceland | -1990 | IMO, ISC, NEIC, FEN09 |
| | | 1991-2006 | IMO07, ISC, FEN09 |
| BG | Bulgaria | -1904 | Gleva, Onc, She, Pap, Gla |
| | | 1905-1990 | Onc, She, Pap, Gla |
| | | 1991-Sep. 1998 | Onc, Pap, Gla |
| | | Oct. 1998-1999 | INFP, Pap, Gla |
| | | 2000-2006 | INFP, Pap09, Gla |
| BIH | Bosnia/Herzegovina | -2004 | HHM, Gla |
| | | 2005-2006 | Gla |
| BL | Belgium and Luxemburg | -1899 | ORB07, ORB |
| | | 1900-1984 | Cam |
| | | 1985-2006 | Cam, ORB07 |
| BY | Belorussia | -1983 | Bob, ISC |
| | | 1984-2006 | ISC |
| CAU | Caucasus | -1997 | God |
| | | 1998-2006 | ISC |
| CH | Switzerland | - 2006 | ECOS-09 |
| CRO | Croatia | -2004 | HHM |
| | | 2005-2006 | Gla |
| CY | Cyprus | -1499 | Amb09, GC, GD, FA |
| | | 1500-1889 | GD, FA |
| | | 1890-1895 | AA, GD, FA |
| | | 1896-1899 | Pou, PP, AA, GD, FA |
| | | 1900-1963 | Pou, PP, AA, AFS, KOERI, GD |
| | | 1964-1990 | Pou, PP, AA, AFS, KOERI |
| | | 1991-1997 | Pou, PP, AFS, KOERI |
| | | 1998-2005 | Pou, AFS, KOERI |
| CZ | Czech Republic | 2006 | Pou, AFS |
| | | -1984 | CAS, GLM, Gru ^{a)} |
| | | 1985-1991 | GFU; Gru91 ^{a)} |
| | | 1992-1993 | GFU |
| | | 1994- 2006 | GFU, GRF |
| D | Germany inside the area 49.6°N-54.8°N, 9.5°E-15.5°E (eastern part) | -1984 | Gru |
| | | 1985-1991 | Gru91 |
| | | 1992-1993 | Ley96 |
| | | 1994-2006 | GRF |

Table 3 (continued)

| Polygon | Country/area | Time period | Local catalogue |
|----------------|---|-------------------------|--|
| D | Germany outside the area 49.6°N-54.8°N, 9.5°E-15.5°E (western part) | -1899 | Ley/Ley96, ORB07, ECOS-09 ^{c)} |
| | | 1900-1981 | Ley/Ley96, Cam, ECOS-09 ^{c)} |
| | | 1982-1984 | Ley96, Cam |
| | | 1985-1993 | Ley96, Cam, ORB07 |
| | | 1994-2006 | GRF, Cam |
| DZ | Algeria | -1799 | Pel, HPP10, Ham, IGN10, IGN ^{b)} |
| | | 1800-2004 | HPP10, Ham, IGN10, IGN ^{b)} |
| | | 2005 | SMM, HPP10, Ham, IGN10, IGN ^{b)} |
| | | 2006 | SMM, HPP10, Ham, IGN10 |
| E | Spain | -1799 | IGC1, Pel, IGN10, MzS, SisF10 ^{d)} |
| | | 1800-1899 | IGC1, IGN10, MzS, SisF10 ^{d)} |
| | | 1900-1960 | IGC1, IGN10, SisF10 ^{d)} |
| | | 1961 | IGC1, IGN10, CNP, SisF10 ^{d)} |
| | | 1962-1995 | IGC1, IGN10, CNP, LDG ^{d)} , SisF10 ^{d)} |
| | | 1996-2000 | IGC2, IGN10, CNP, LDG ^{d)} , SisF10 ^{d)} |
| | | 2001-2002 | IGC2, IGN10, LDG ^{d)} , SisF10 ^{d)} |
| | | 2003-2004 | IGC2, IGN10, LDG ^{d)} , SisF10 ^{d)} |
| F | France | 2005-2006 | SMM, IGC2, IGN10, LDG11 ^{d)} , SisF10 ^{d)} |
| | | -1961 | SisF10, Ley/Ley96, ECOS-09 ^{c)} |
| | | 1962-1981 | LDG, SisF10, Ley/Ley96 |
| | | 1982-1993 | LDG, SisF10, Ley96 |
| | | 1994-2004 | LDG, SisF10 |
| FEN | Fennoscandia, Balticum, Kola Peninsula, and adjacent waters | 2005-2006 | LDG11, SisF10 |
| | | -1984 | WG, Nik, Bob, FEN09 |
| | | 1985-1988 | Nik, Bob, FEN09 |
| | | 1989-2006 | FEN09 |
| GR | Greece | -1968 | Pap |
| | | 1969-1999 | RKB10, Pap |
| | | 2000-2005 | RKB10, Pap09 |
| | | 2006 | RKB10, RKB11, Pap09 |
| H | Hungary | -1986 | Zsi |
| | | 1987-1994 | Zsi94 |
| | | 1995-1999 | Zsi99 |
| | | 2000-2005 | Tot |
| | | 2006 | Georisk |
| I | Italy | -1900 | CPTI04 |
| | | 1000-1900 ⁵⁾ | CPTI08, CPTI04 |
| | | 1901-July 2001 | CPTI08 |
| | | Aug. 2001-2006 | CPTI08, INGV |
| LWE | Libya and western Egypt | -1899 | AMA |
| | | 1900-1963 | AMA, Amb94, Amb84 |
| | | 1964-1976 | AMA, Amb94, Amb84, ISC |
| | | 1977-1990 | AMA, Amb94, ISC |
| | | 1991-1992 | AMA, ISC |
| | | 1993-2006 | ISC |

Table 3 (continued)

| Polygon | Country/area | Time period | Local catalogue |
|----------------|-----------------------|--------------------|-------------------------------------|
| MA | Morocco | -1799 | Pel, Ham, IGN10, IGN ^f |
| | | 1800-1960 | Ham, IGN10, IGN ^f |
| | | 1961-2000 | Ham, IGN10, IGN ^f , CNP |
| | | 2001-2004 | Ham, IGN10, IGN ^f |
| | | 2005 | SMM, Ham, IGN10, IGN ^f |
| | | 2006 | SMM, Ham, IGN10 |
| MD | Moldavia | -1977 | KU, KSh, Onc |
| | | 1978-1995 | KU, Onc |
| | | 1996-Sep. 1998 | Onc |
| | | Oct. 1998-2006 | INFP |
| MK | Macedonia | -1968 | Pap, HHM, She, Gla |
| | | 1969-1990 | RKB10, Pap, HHM, She, Gla |
| | | 1991-1999 | RKB10, Pap, HHM, Gla |
| | | 2000-2004 | RKB10, Pap09, HHM, Gla |
| | | 2005-2006 | RKB10, Pap09, Gla |
| NL | The Netherlands | -June 1906 | Hou |
| | | July 1906-2006 | KNMI09 |
| P | Portugal | -1799 | Pel, IGN10 |
| | | 1800-1960 | IGN10 |
| | | 1961-2000 | CNP, IGN10 |
| | | 2001-2004 | IGN10 |
| | | 2005-2006 | SMM, IGN10 |
| PL | Poland | -1482 | Pag, Gru ^{a)} |
| | | 1483-1984 | GLM, Gru ^{a)} |
| | | 1985-1991 | GLM, Gru91 ^{a)} |
| | | 1992-1993 | GLM |
| | | 1994-1995 | GLM, GRF |
| | | 1996-2006 | GRF |
| RO | Romania | -1986 | Onc, Zsi |
| | | 1987-1994 | Onc, Zsi94 |
| | | 1995-1998, Sep. | Onc, Zsi99 |
| | | 1998 Oct.-1999 | INFP, Zsi99 |
| | | 2000-2005 | INFP, Tot |
| | | 2006 | INFP, Georisk |
| SEM | SE Mediterranean area | -1499 | Amb09, Amb06, SDM, KKP, GC, FA, AMA |
| | | 1500-1895 | Amb06, SDM, KKP, FA, AMA |
| | | 1896-1899 | Pou, PP, SDM, KKP, FA, AMA |
| | | 1900-1963 | Pou, PP, KKP, AMA, AFS, KOERI |
| | | 1964-1992 | Pou, PP, KKP, AMA, AFS, KOERI, ISC |
| | | 1993-1997 | Pou, PP, KKP, AFS, KOERI, ISC |
| | | 1998-2005 | Pou, AFS, KOERI, ISC |
| | | 2006 | Pou, AFS, ISC |
| SK | Slovakia | -1994 | Lab |
| | | 1995-1999 | Zsi99 |
| | | 2000-2005 | Tot |
| | | 2006 | Georisk |

Table 3 (continued)

| Polygon | Country/area | Time period | Local catalogue | | |
|----------------|--|-----------------|--|-----------|--------------------------|
| SLO | Slovenia | -1981 | ZivS, HHM | | |
| | | 1982-2004 | HHM | | |
| | | 2005-2006 | Gla | | |
| TN | Tunisia | - 2005 | HPP10, Ham, IGN | | |
| | | 2006 | HPP10, Ham | | |
| TR | Turkey, lon. $\leq 30.5^\circ\text{E}$ | -1899 | Amb02, Pap | | |
| | | 1900-1968 | Amb02, KOERI, Pap | | |
| | | 1969-1999 | Amb02, KOERI, RKB10, Pap | | |
| | | 2000-2005 | KOERI, RKB10, Pap09 | | |
| | | 2006 | Kal, RKB10, Pap09 | | |
| TR | Turkey, lon. $> 30.5^\circ\text{E}$ | -1499 | Amb09, SDM, KKP, GC, FA, TR-GSHAP, God, KU | | |
| | | 1500-1895 | SDM, KKP, FA, TR-GSHAP, God, KU | | |
| | | 1896-1899 | Pou, PP, SDM, KKP, FA, TR-GSHAP, God, KU | | |
| | | 1900-1995 | KOERI, Pou, PP, KKP, God, KU | | |
| | | 1996-1997 | KOERI, Pou, PP, KKP, God | | |
| | | 1998-1999 | KOERI, Pou | | |
| | | 2000-2005 | KOERI, Pou | | |
| | | 2006 | Kal, Pou | | |
| | | UA | Ukraine | -1899 | KU, KSh, Zsi, Onc |
| | | | | 1900-1977 | KU, KSh, Zsi, Onc, KOERI |
| 1978-1986 | KU, Zsi, Onc, KOERI | | | | |
| 1987-1994 | KU, Zsi94, Onc, KOERI | | | | |
| 1995 | KU, Zsi99, Onc, KOERI | | | | |
| 1996-Sep. 1998 | Zsi99, Onc, KOERI | | | | |
| Oct. 1998-1999 | Zsi99, INFP, KOERI | | | | |
| 2000-2005 | Tot, INFP, KOERI | | | | |
| UK | United Kingdom and adjacent waters | 2006 | Georisk, INFP | | |
| | | -1961 | MS, Mus, SisF10 | | |
| | | 1962-1993 | MS, Mus, LDG | | |
| | | 1994-2004 | MS, Mus06, LDG | | |
| | | 2005 | MS, Mus06, LDG11 | | |
| | | 2006 | MS, LDG11 | | |
| YU | Serbia/Montenegro | -1998, Sep. | Onc, HHM, Gla | | |
| | | 1998, Oct.-2004 | INFP, HHM, Gla | | |
| | | 2005-2006 | INFP, Gla | | |

^a Part of polygon inside the area 49.6°N – 54.8°N , 9.5°E – 15.5°E (with first priority)

^b IGN is applied only if lat. $< 32^\circ\text{N}$ or lon. $> 6^\circ\text{E}$, i.e., outside the area covered by the IGN10 catalogue

^c Selected events

^d An LDG, LDG11, or SisF10 entry in the polygon E (Spain) enters EMEC only if there is a corresponding IGC1, IGC2 or IGN10 entry in the polygon F (France)

^e CPTI08 data in the region 41.5°N – 43.5°N , 11°E – 15°E ; CPTI04 outside this region

^f IGN is applied only if lat. $< 32^\circ\text{N}$, i.e., outside the area covered by the IGN10 catalogue

Table 4. Algorithms for calculation of M_w for the different catalogues - the southern part (the relations refer to Section 3.3). Original M_w (or M_0) values usually have highest priority. In formulae containing the focal depth, $h = 10$ km is set if no value is given

| Catalogue | Priority | Original size entity | Algorithm | Reference/Comment |
|-----------------------------------|----------|----------------------|--|---|
| Sulstarova et al. (2000) | 1 | M_S | Relation (1) | |
| Harbi et al. (2010) | 1 | M_S | Relations (3) | |
| | 2 | I_0 | $I_{max} = I_0$ & Relation (2) | |
| Hamdache et al. (2010) | 1 | M_w | | |
| Nunes et al. (2004) | 1 | M_w | | All magnitudes are taken from Borges et al. (2007) or ISC bulletins |
| | 2 | M_S | Relation (15) | |
| | 3 | m_b | Relation (8) | |
| Glavatović (2009) | 1 | M_L | Croatia: $M_w = 0.408 + 0.930 \cdot M_L$ $\sigma = 0.209$ | Glavatović B, personal communication |
| | | | Other polygons: $M_w = 0.474 + 0.933 \cdot M_L$ $\sigma = 0.215$ | Glavatović B, personal communication |
| Glavcheva (2004) | 1 | I_0 | Relation (5) & Relation (4) | |
| Godzikovskaya (2001) | 1 | M_L | Relation (6) | |
| Shebalin et al. (1998) | 1 | I_0 | Relation (5) & Relation (4) | |
| Herak et al. (1996) | 1 | M_L | Relation (4) | M_L and M_m not used before 1908 |
| | 2 | M_m | $M_L = M_m$ | |
| | 3 | I_0 | Relation (5) | |
| | 4 | I_{max} | $I_0 = I_{max}$ | |
| Galanopoulos and Delibasis (1965) | 1 | I_0 | Relation (7) & Relations (3) | |
| Ambraseys and Adams (1993) | 1 | M_S | Relations (3) | |
| | 2 | m_b | Relation (8) | |
| Papazachos and Papaioannou (1999) | 1 | M_S | Relations (3) | |
| Papaioannou (2001) | 1 | M_w | | |
| Ambraseys et al. (1994) | 1 | M_S | Relations (3) | |
| | 2 | m_b | Relation (8) | |
| | 3 | I_0 | Relation (7) | |
| LDG (2005) | 1 | M_{Lf} | Relations (9) & Relation (4) | |
| LDG (2011) | 1 | M_{Lf} | Relations (9) & Relation (4) | |
| BRGM-EDF-IRSN (2010) | 1 | I_0 | Relation (10) | |
| Papazachos et al. (2003) | 1 | M_w | | |
| Papazachos et al. (2009) | 1 | M_w | | |
| Roumelioti et al. (2010) | 1 | M_w | | |
| Roumelioti et al. (2011) | 1 | M_w | | |
| Martínez Solares (2003) | 1 | M_w | | |
| IGN (2005) | 1 | m_b | Relation (8) | |
| | 2 | $m_b Lg$ | Relation (11) | |
| | 3 | I_0 | $I_{max} = I_0$ & Relation (2) | |
| | 4 | I_{max} | Relation (2) | |
| IGN (2010) | 1 | $m_b Lg$ | Relation (11) | |
| | 2 | I_0 | $I_{max} = I_0$ & Relation (2) | |
| IGC (2009a) | 1 | I_0 | Relation (2) | |
| IGC (2009b) | 1 | M_L | $m_b Lg = M_L$ & Relation (11) | |

Table 4. (continued)

| Catalogue | Priority | Original size entity | Algorithm | Reference/Comment |
|--------------------------------------|----------|----------------------|------------------------------|---|
| Carrilho, pers. communication (2009) | 1 | M_L | $M_w = M_L$ | |
| Stich et al. (2010) | 1 | M_w | | |
| CPTI Working Group (2004) | 1 | M_w | | |
| CPTI Working Group (2008) | 1 | M_w | | |
| INGV (2007) | 1 | M_L | Relation (12) | M_L and M_d not used before August 2001 |
| | 2 | M_d | Relation (13) | |
| Khair et al. (2000) | 1 | M_S | Relations (3) | |
| | 2 | I_0 | Relation (7) | |
| Abdallah et al. (2004) | 1 | M_L | Relation (4) | |
| Sbeinati et al. (2005) | 1 | M_S | Relations (3) | |
| Ambraseys (2006) | 1 | M_S | Relations (3) | |
| Feldman and Amrat (2007) | 1 | M_S | Relations (3) | |
| | 2 | M_L | Relation (14) | |
| | 3 | I_0 | Relation (7) | |
| Ambraseys (1984) | 1 | M_S | Relations (3) | |
| | 2 | m_b | Relation (8) | |
| Ambraseys (1994) | 1 | M_S | Relations (3) | |
| Guidoboni and Comastri (2005) | 1 | I_0 | Relation (7) & Relations (3) | |
| Ambraseys (2009) | 1 | M_S | Relations (3) | |
| Peláez et al. (2007) | 1 | M_w | | |
| Oncescu et al. (1999) | 1 | M_w | | |
| INFP (2009) | 1 | M_w | | |
| Turkish GSHAP Catalogue (2000) | 1 | M_w | | |
| Ambraseys (2002) | 1 | M_0 | Hanks and Kanamori (1979) | |
| Kalafat et al. (2009) | 1 | M_w | | |
| Kalafat et al. (2011) | 1 | M_w | | |
| ISC bulletins | 1 | M_w | | |
| | 2 | M_S | Relation (15) | |
| | 3 | m_b | Relation (8) | |

Originally given M_w (or M_0) values, and derived M_w values from entries in special studies, usually have the highest priority. In formulae containing the focal depth, a default value of 10 km is set if no value is given

Table 5. Algorithms for calculation of M_w for the different catalogues - the northern part (when not quoted as “this study”, the relations refer to the GWS09 study). Original M_w (or M_0) values usually have highest priority. In formulae containing the focal depth, $h = 10$ km is set if no value is given

| Catalogue | Priority | Original size entity | Algorithm | Reference/Comment |
|--|----------|----------------------|------------------------------|-------------------|
| Lenhardt (1996), ZAMG (2009) | 1 | M_L | Relation (2) | |
| | 2 | I_0 | Relation (9) | |
| Verbeiren et al. (1995), ORB (2009), Camelbeeck (2009) | 1 | M_L | Relation (2) | |
| | 2 | I_0 | Relation (10) | |
| Boborikin et al. (1993) | 1 | I_0 | Relation (11) & Relation (2) | |

Table 5. (continued)

| Catalogue | Priority | Original size entity | Algorithm | Reference/Comment |
|--|----------|----------------------|--|--|
| Lenhardt (1996), ZAMG (2009) | 1 | M_L | Relation (2) | |
| | 2 | I_0 | Relation (9) | |
| Verbeiren et al. (1995), ORB (2009), Camelbeeck (2009) | 1 | M_L | Relation (2) | |
| | 2 | I_0 | Relation (10) | |
| Boborikin et al. (1993) | 1 | I_0 | Relation (11) & Relation (2) | |
| Herak et al. (1996) | 1 | M_L | Relation (4) of this study | M_L and M_m not used before 1908 |
| | 2 | M_m | $M_L = M_m$ | |
| | 3 | I_0 | Relation (5) of this study | |
| | 4 | I_{max} | $I_0 = I_{max}$ | |
| Schenková (1993) | 1 | M_L | Relation (2) | |
| | 2 | I_0 | Relation (12) | |
| Zedník (2005) | 1 | M_L | Relation (2) | |
| | 2 | I_0 | Relation (12) | |
| Nikonov (1992) | 1 | I_0 | Relation (11) & Relation (2) | |
| FENCAT (2009) | 1 | M_L | Relation (2) | |
| | 2 | M_S | $M_w = M_S$ | Grünthal and Wahlström (2003) |
| | 3 | m_b | Relation (6) | |
| | 4 | I_0 | Relation (11) | |
| | 5 | M_d | $M_L = M_d$ | Grünthal and Wahlström (2003) |
| Wahlström and Grünthal (1994) | 1 | M_L | Relation (2) | |
| | 2 | I_0 | Relation (11) | |
| LDG (2005, 2011) | 1 | M_{Lf} | Relations (9) & Relation (4) of this study | |
| BRGM-EDF-IRSN (2010) | 1 | I_0 | Relation (10) of this study | |
| Grünthal (1988) | 1 | M_L | Relation (2) | |
| | 2 | I_0 | Relation (12) | |
| Grünthal (1991) | 1 | M_L | Relation (2) | |
| Leydecker (1986, 1996) | 1 | M_L | Relation (2) | |
| | 2 | I_0 | Relation (12) | |
| SZGRF (2010) | 1 | M_L | Relation (2) | |
| Zsíros et al. (1990), Zsíros (1994) | 1 | M_L | Relation (2) | |
| | 2 | I_0 | $M_L = 0.6 I_0 + 1.8 \log h - 1.0$ | Zsíros (1983) after Gutenberg and Richter (1942); Zsíros T, personal communication |
| Zsíros (1999), Tóth et al. (2006), Georisk (2009) | 1 | M_L | Relation (2) | |
| IMO (2007a, b) | 1 | M_L | Relation (16) of this study | |
| CPTI Working Group (2004, 2008) | 1 | M_w | | |
| INGV (2007) | 1 | M_L | Relation (12) of this study | M_L and M_d not used |

Table 5. (continued)

| Catalogue | Priority | Original size entity | Algorithm | Reference/Comment |
|--|----------|----------------------|------------------------------|---|
| | 2 | M_d | Relation (13) of this study | before August 2001 |
| Houtgast (1995) | 1 | M_L | Relation (2) | |
| | 2 | I_0 | Relation (10) | |
| KNMI (2009) | 1 | M_L | Relation (2) | |
| Pagaczewski (1972) | 1 | I_0 | Relation (12) & Relation (2) | |
| Guterch and Lewandowska-Marciniak (2002) | 1 | M_L | Relation (2) | |
| | 2 | I_0 | Relation (12) | |
| Oncescu et al. (1999), INFP (2009) | 1 | M_w | | |
| Labak (1998) | 1 | M_L | Relation (2) | |
| | 2 | M_S | $M_w = M_S$ | |
| | 3 | I_0 | $M_S = 0.55 I_0 + 0.95$ | Labak (1998) Labak (1998) applies different formulae for different geographical subregions – see Grünthal and Wahlström (2003) for details |
| Živčić (1993) | 1 | M_L | Relation (12) of this study | see Chapter 4 |
| | 2 | I_0 | Relation (5) of this study | |
| Fäh et al. (2011) | 1 | M_w | | |
| Musson (1994, 2006) | 1 | M_L | Relation (2) | |
| Musson and Sargeant (2007) | 1 | M_w | | |
| Kondorskaya and Shebalin (1982) | 1 | I_0 | Relation (11) & Relation (2) | |
| Kondorskaya and Ulomov (1999) | 1 | M_w | | |
| ISC bulletins | 1 | M_w | | |
| | 2 | M_S | Relation (15) of this study | |
| | 3 | m_b | Relation (8) of this study | |
| NEIC bulletins | 1 | M_S | Relation (5) | |
| | 2 | m_b | Relation (6) | |