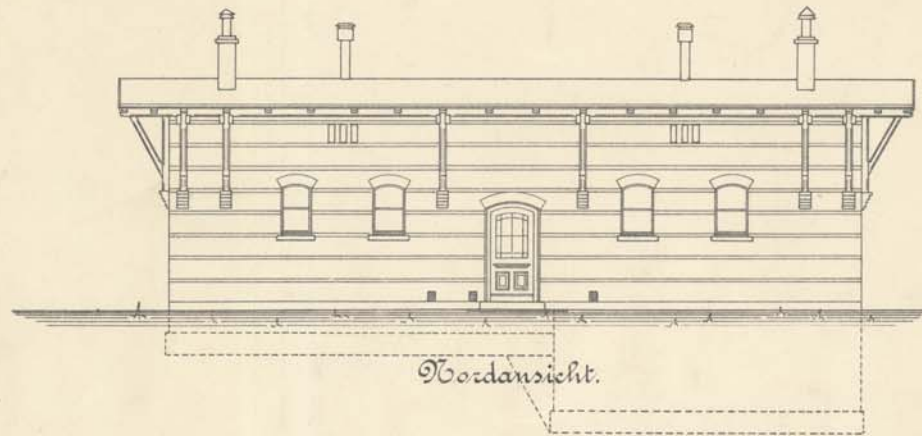


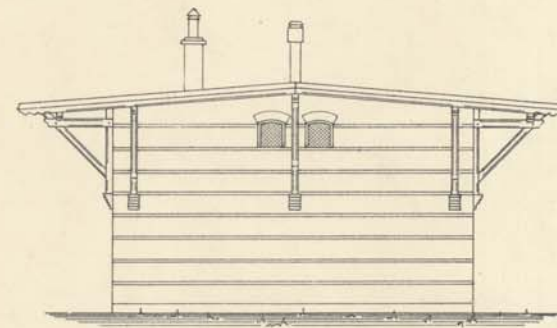
Geodätisches Institut auf dem Telegraphenberge bei Potsdam.

Inventarien-Zeichnung.

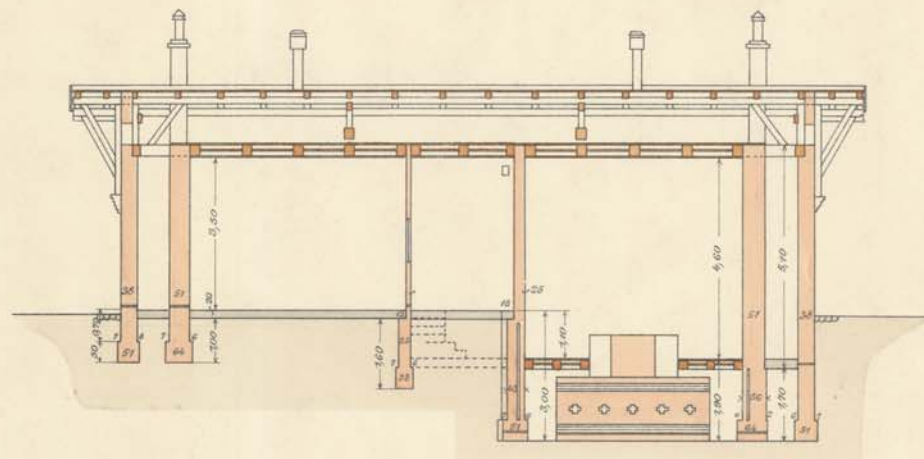
Erdbeben-Beobachtungs-Häuschen.



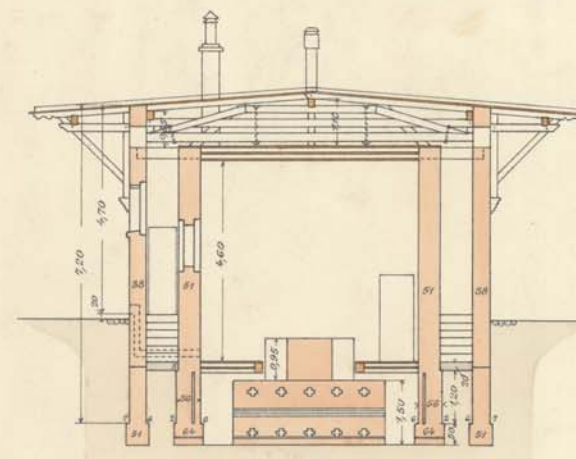
Nordansicht.



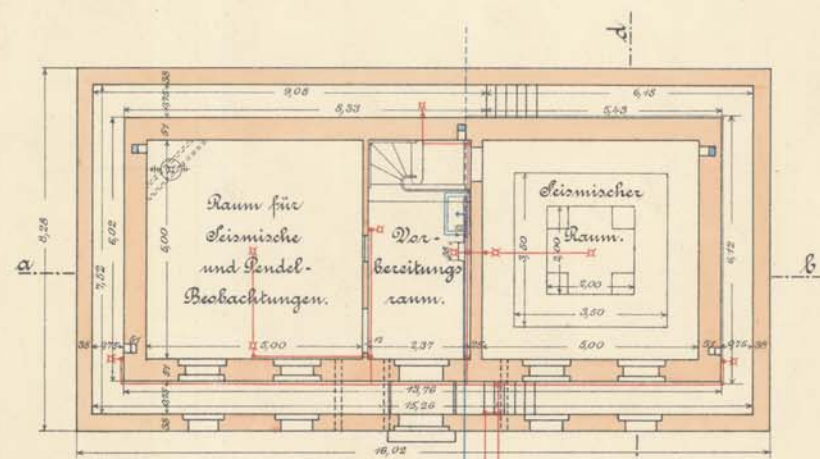
Westansicht.



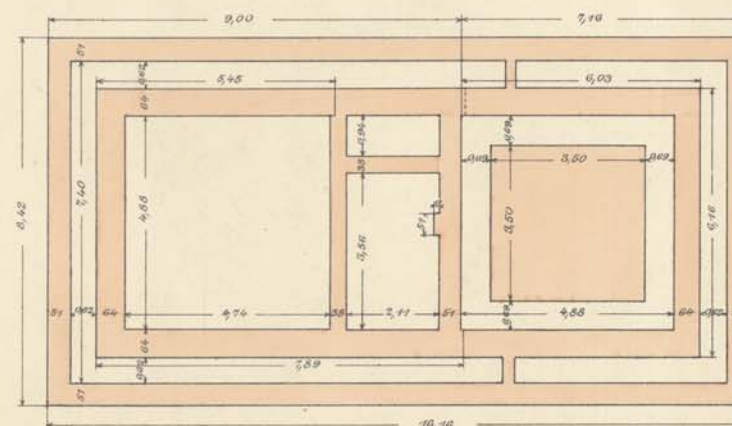
Längenschnitt a-b.






Querschnitt c-d.



Grundriss des Erdgeschosses.



Grundriss der Fundamente.

-  Gasleitung nebst Beleuchtungskörper.
-  Wasser-Zuleitung.
-  Wasser-Ableitung.

M. 1:100.

