



Originally published as:

Ulrich, M., Grosse, G., Chabrillat, S., Schirrmeister, L. (2009): Spectral characterization of periglacial surfaces and geomorphological units in the Arctic Lena Delta using field spectrometry and remote sensing. - *Remote Sensing of Environment*, 113, 6, 1220-1235

DOI: [10.1016/j.rse.2009.02.009](https://doi.org/10.1016/j.rse.2009.02.009)

# **Spectral characterization of periglacial surfaces and geomorphological units in the Arctic Lena Delta using field spectrometry and remote sensing**

Mathias Ulrich<sup>a,\*</sup>, Guido Grosse<sup>b</sup>, Sabine Chabrillat<sup>c</sup>, Lutz Schirrmeister<sup>a</sup>

a – Alfred Wegener Institute for Polar and Marine Research, Research Unit Potsdam, Telegrafenberg A45, 14473 Potsdam, Germany

b – Geophysical Institute, University of Alaska, Fairbanks, AK 99775-7320, USA

c – GeoForschungsZentrum Potsdam, Telegrafenberg A17, 14473 Potsdam, Germany

\* – Corresponding author. Tel.: +49(331)2882156; fax: +49(331)2882137.

E-mail address: Mathias.Ulrich@awi.de

## **Abstract**

Important environmental parameters in arctic periglacial landscapes (i.e. permafrost temperature, active-layer depth, soil moisture, precipitation, vegetation cover) will very likely change in a warming climate. The thawing of permafrost, especially, might cause massive landscape changes due to thermokarst and an enhanced release of greenhouse gasses from the large amounts of carbon stored in frozen deposits, resulting in positive climate-warming feedback. For the identification, mapping, and quantification of such changes on various scales up to the entire circum-Arctic, remote sensing and spatial data analysis are essential tools. In this study an extensive field-work dataset including spectral surface properties, vegetation, soils, and geomorphology was acquired in the largest Arctic delta formed by a single river, the Siberian Lena River Delta. A portable field spectrometer (ASD FieldSpec Pro FR<sup>®</sup>) was used for spectral surveys of terrain surfaces, and optical satellite data (Landsat Enhanced Thematic Mapper (ETM+), CHRIS-Proba) were used for the characterization, manual mapping, and automatic classification of typical periglacial land-cover units in the Lena Delta. Qualitative data from soils, vegetation, soil moisture, and relief units were correlated with the field spectral data and catalogued for a wide variety of surface types. The wide range of micro- and meso-scale variations of periglacial surface features in the delta results in distinctive spectral characteristics for different land-cover units. The three main delta terraces could also be spectrally separated and characterized. The present dataset provides a basis for further spectral data acquisitions in the Lena Delta and for comparisons with periglacial surfaces from other regions.

Keywords: Field spectrometry, spectral properties, land-cover classification, periglacial surface features, Lena Delta, North Siberia

Running short title: Spectral characterization of Arctic periglacial surfaces

## 1. Introduction and Background

Most climate simulations predict considerable climate warming, especially in the Arctic, over the next century (ACIA 2005). Permafrost regions, which cover about 24% of the Northern Hemisphere land surface (Zhang et al. 1999), are considered highly sensitive to climate change (e.g. Nelson et al. 2002, Sazonova et al. 2004). In this context, the monitoring of arctic permafrost landscapes is an important challenge; we must understand the present in order to quantify future environmental changes and their impacts in the Arctic. Permafrost, clearly a climatically-controlled phenomenon, results in special frost-related structures, land-surface features, and processes summarized by the term “periglacial” (Everdingen 2005). In the periglacial environment, permafrost degradation and aggradation are controlled by climate variations and local factors that influence soil temperature fluctuations. Disturbances of the sensitive near-surface thermal-energy permafrost balance have a large impact on periglacial landscape formation and the tundra ecosystem. One of the most important local factors influencing permafrost distribution and thickness is the type of vegetation cover, which can act as an insulator buffering the interaction between surface and ground thermal regimes (Kade et al. 2006). The thawing of permafrost deposits that contain ground ice results in surface subsidence (thermokarst) and the formation of characteristic depressions in the landscape. Thermokarst formation results in the increase of greenhouse gas emissions to the atmosphere because warming releases old carbon pools from frozen deposits (Walter et al. 2006, Zimov et al. 2006); this process is probably a highly-significant climate influence during periods of warming like in the early Holocene (Walter et al. 2007). Regions of wet tundra in periglacial landscapes, found in many thermokarst basins and floodplains in Arctic lowlands, are also considered to be strong methane sources since Arctic permafrost soils often contain large amounts of organic carbon. The soils’ syngenetically frozen plant remains and peat horizons form large and climate-sensitive carbon reservoirs in the Arctic (Goryachkin et al. 1999, Wagner et al. 2007).

Remote sensing provides the most prospective tools for monitoring changes in the remote and vast arctic periglacial environments. Approaches include mapping permafrost distribution and periglacial geomorphology (e.g. Peddle & Franklin 1993, Etzelmüller et al. 2001, Boike & Yoshikawa 2003, Zhang et al. 2004, Frohn et al. 2005, Grosse et al. 2005) and land-cover mapping and change detection (e.g. Rees et al. 2003, Stow et al. 2004, Olthof & Fraser 2007). In this study we present a detailed Landsat Enhanced Thematic Mapper (ETM+)-based land-cover classification for a western Lena Delta study site. CHRIS-Proba data were used for soil mapping in a thermokarst depression.

The successful interpretation of remote-sensing data requires substantial field work to understand the small-scale variations that are common in periglacial environments. In addition to the characterization of vegetation, soils, and geomorphology, the acquisition of

spectral surface properties is essential to capture environmental variability and related land-surface processes. For our study, a portable field spectrometer was used that allowed hyperspectral measurements of specific objects or surfaces in their natural environment in the visible (VIS, 400 – 700 nm), near-infrared (NIR, 700 – 1300 nm) and short-wave infrared (SWIR, 1300 – 2500 nm) wavelength ranges. For the first time, we acquired a comprehensive dataset on spectral properties of periglacial tundra surfaces in the Lena Delta. Currently, there are only a few field spectrometer studies of arctic periglacial environments, mostly focusing on reflectance properties from different tundra types (Hope et al. 1993, Stow et al. 1993, Vierling et al. 1997, Riedel et al. 2005). The reflectance-based normalized difference vegetation indices (NDVIs) calculated in these studies were generally dependent on surface conditions and on the composition of tundra vegetation communities. The broad-band albedo of arctic and subarctic surfaces as a function of surface and sky conditions was measured by Petzold & Rencz (1975) and Hope et al. (1991). A high-resolution field spectrometer was used by Hinkler et al. (2003) for differentiating surface types by albedo measurements during the snowmelt season at Svalbard. Detailed description of the spectral features of subarctic lichens determined from hyperspectral reflectance measurements was presented by Rees et al. (2004). Near-surface moisture conditions were monitored in northern peatlands by Harris et al. (2005), using reflectance spectra of *Sphagnum* moss. More detailed studies of diverse vegetation types and surface conditions exist for lower-latitude regions (e.g. Pinker & Karnieli 1995, Okin et al. 2001, Chabrillat et al. 2002, Schmidt & Skidmore 2003, van Til et al. 2004), often with focus on soil moisture (e.g. Weidong et al. 2002), leaf biochemistry (e.g. Elvidge 1990, Jago et al. 1999), or vegetation water content (e.g. Ceccato et al. 2001, Pu et al. 2003).

The spectral characteristics of objects and surfaces depend on their chemical and biophysical properties, and on viewing and illumination geometry (Milton 1987, Curtiss & Goetz 1994, Milton et al. 1995). In the natural tundra environment of the Lena Delta three major spectral groups can be distinguished: vegetation, bare soil, and surface water (Fig. 1). However, the spectral surface signatures are usually complex mixed signals influenced by type and state of vegetation, soil surface features, and moisture content in soils and vegetation. Differences in reflectance spectra and especially in specific absorption features in the VIS to SWIR region (400 – 2500 nm) can be used to differentiate a wide variety of surfaces. The spectral reflectance of vegetation is influenced by leaf pigments (mainly chlorophyll), cellulose in dry vegetation, cell structure, water content, and canopy structure, and depends on the phenological stage in the growing season. There are two main spectral signatures of vegetation. Spectra of green, photosynthetically active vegetation are characterized by low reflectance in the VIS, strong chlorophyll absorption at 680 nm, and high reflectance as well as strong water-absorption bands in the NIR and SWIR. These

water-absorption features, mainly centred at about 970 nm, 1200 nm, 1450 nm, and 1930 nm, are correlated with and can be used to assess leaf water content (e.g. Pu et al. 2003, Clevers et al. 2008, Seelig et al. 2008). Most characteristic is the point of maximum slope in the reflectance spectra of green vegetation around 690 – 740 nm. This point, termed the “red edge” (e.g. Curran et al. 1990), marks the boundary between chlorophyll absorption and the high reflectance in the NIR by green plants. There is a strong correlation between the appearance of the red edge and the vitality of vegetation (Rock et al. 1988, Curran et al. 1990). The spectral reflectance of dry, non-photosynthetically-active vegetation is influenced by the absorption of cellulose and lignin in the SWIR and the lack of absorption by chlorophyll and water.

The spectral signature of bare soil (Fig. 1) typically increases with wavelength in the VIS and stays relatively constant in the NIR and SWIR. The spectral reflectance and absorption features are affected by soil moisture, texture, mineral content, and organic matter. A coarse-grained, wet soil has lower reflectance than a fine-grained, dry soil (Clark 1999, van der Meer 2004). Generally, the reflectance decreases when soil moisture increases (Weidong et al. 2002). Estimating soil moisture using distinct water-absorption features is rather difficult if the soil is covered by vegetation. Usually, measurements of the broad absorption bands centred at 1450 nm and 1930 nm are only feasible under laboratory conditions, since these bands are affected by atmospheric water vapour.

The reflectance of water is low in all spectral ranges. The reflectance increases in the visible spectral range if the water contains suspended material.

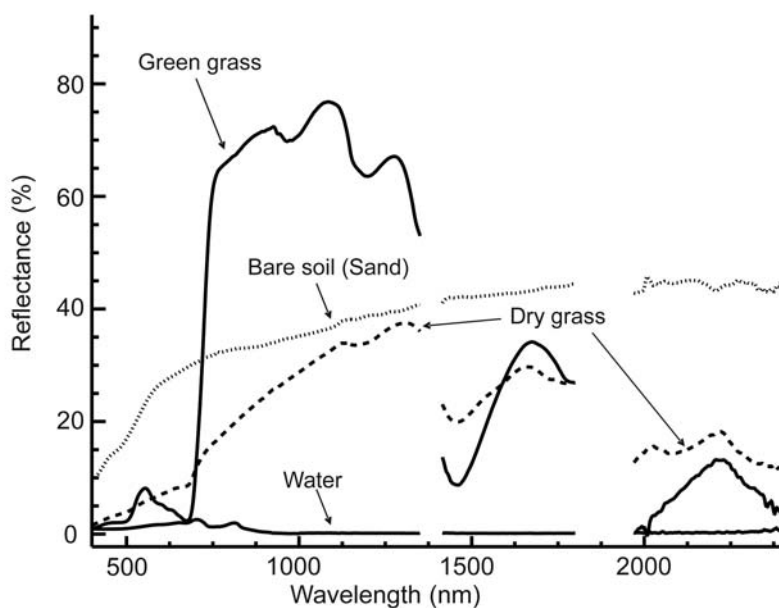


Fig.1. Spectral signatures of green and dry grass, bare soil, and water in tundra landscapes (August 2005). The measurements were performed using an ASD FieldSpec Pro FR<sup>®</sup>. Noise by atmospheric water absorption around 1350 - 1415 nm and 1800 - 1970 nm is masked. Note distinct absorption features for green vegetation: Chlorophyll at 680nm, and water at 970 nm and 1200 nm.

The main goal of this study is the general characterization and classification of periglacial surfaces and geomorphological units in the Lena Delta by their spectral properties. Subordinate goals are: (i) the creation of a field spectra database for periglacial and tundra surfaces in the central and western delta to aid current and future multi- and hyperspectral land-cover mapping in the Lena Delta; (ii) the development of a detailed land-cover classification based on Landsat ETM+; and (iii) the mapping of pedological units in the western Lena Delta using CHRIS-Proba data. The purpose of all these goals is to generate a remotely-sensed base dataset for detecting and quantifying long-term changes in the climate-sensitive permafrost environment of the Lena Delta.

## 2. Study area

The Lena Delta is located at the Laptev Sea coast, NE Siberia (Fig. 2). The Lena Delta is the largest Arctic delta formed by a single river, and covers about 29,000 km<sup>2</sup>. The delta is located in the zone of continuous permafrost with permafrost depths of 500 – 600m (Grigoriev et al. 1996), and it is dominated by fluvial-deltaic and periglacial processes.

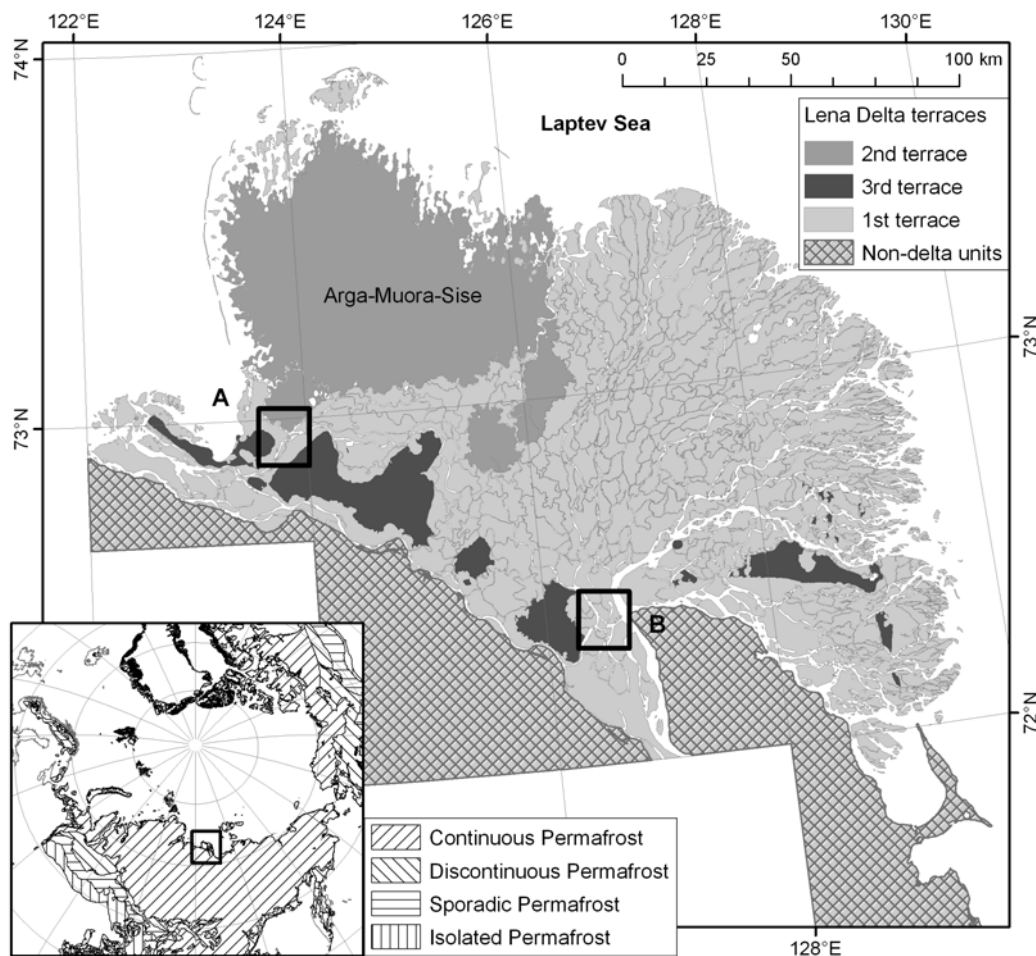


Fig.2. Small inset map: Location of the Lena Delta in the continuous permafrost region of NE Siberia (Permafrost distribution based on Brown et al., 1998). Large map: Geomorphological division of the Lena Delta (based on Grigoriev, 1993, and Schwamborn et al., 2002) and location of the study sites. A: main study site on Turakh-Sise, Ebe-Basyn-Sise, and Khardang-Sise islands; B: study sites on Samoylov and Kurungnakh-Sise islands.

The typical maximum active-layer depths range from 30 to 90 cm. Taliks (i.e. “multi-annually unfrozen ground occurring in a permafrost area”, Everdingen 2005) occur below large water bodies, namely thermokarst lakes and delta channels (Grigoriev 1993). The climate is true-arctic, with a mean annual air temperature of about -14°C and a mean annual precipitation around 250 mm (WWIS 2006). The delta consists of more than 1500 islands of various sizes. One of the largest, with an area of about 7000 km<sup>2</sup>, is Arga-Muora-Sise Island in the northwestern part of the delta. Most of the Lena Delta is geomorphologically active, and consists of wetlands with heterogeneous micro-relief. Thaw depressions with thermokarst lakes, ice wedge polygons, and pingos are common. According to the Circumpolar Arctic Vegetation Map (CAVM), the delta exists in bioclimatic subzones C and D, and is dominated by sedge, grass, moss, and dwarf shrub wetlands (CAVM Team 2003). Large parts of the polygonal tundra landscape in the delta are occupied by typical arctic, hydromorphic soils with thick peat horizons.

The Lena Delta is subdivided into three main geomorphological terraces (Fig. 2) based on differences in cryolithology, hydrology, and geomorphology (Grigoriev 1993, Are & Reimnitz 2000). The first terrace (1 – 12 m a.s.l.) includes Holocene and recent floodplains, and represents the modern “active” delta. The slightly elevated Holocene floodplains mainly consist of typical ice-wedge polygonal tundra with strong microrelief and a highly variable hydrological regime (Boike et al. 2008). The second terrace (11 – 30 m a.s.l.) is characterized by sandy deposits of late Pleistocene to early Holocene fluvial genesis. On this terrace, strongly NNE-SSW-oriented thaw depressions with thermokarst lakes are abundant (Fig. 3). The specific landscape characteristics of this terrace, also referred to as the Arga Complex, differ substantially from the other delta units. Its geological genesis is still under investigation and is debated (Are & Reimnitz 2000, Schwamborn et al. 2000, 2002). The third Lena Delta terrace (30 – 60 m a.s.l.) is formed by erosional remnants of a late Pleistocene accumulation plain of ice-rich and organic-rich deposits (Ice Complex or Yedoma) underlain by sandy sequences. The deposits of this unit often contain paleo-soils and thick peat horizons (Schirrmeister et al. 2003, Wetterich et al. 2008). For our detailed study we focused on Turakh-Sise Island, Ebe-Basyn-Sise Island, and Khardang-Sise Island (Fig. 2, site A) in the western delta, hereafter named the Turakh study site, although some measurements were additionally carried out on Samoylov and Kurungnakh-Sise islands in the central Lena Delta (Fig. 2, site B). The study areas cover all three geomorphological terraces and a wide spectrum of tundra wetlands, deltaic features, and periglacial surface structures typical of the Arctic Lena Delta.

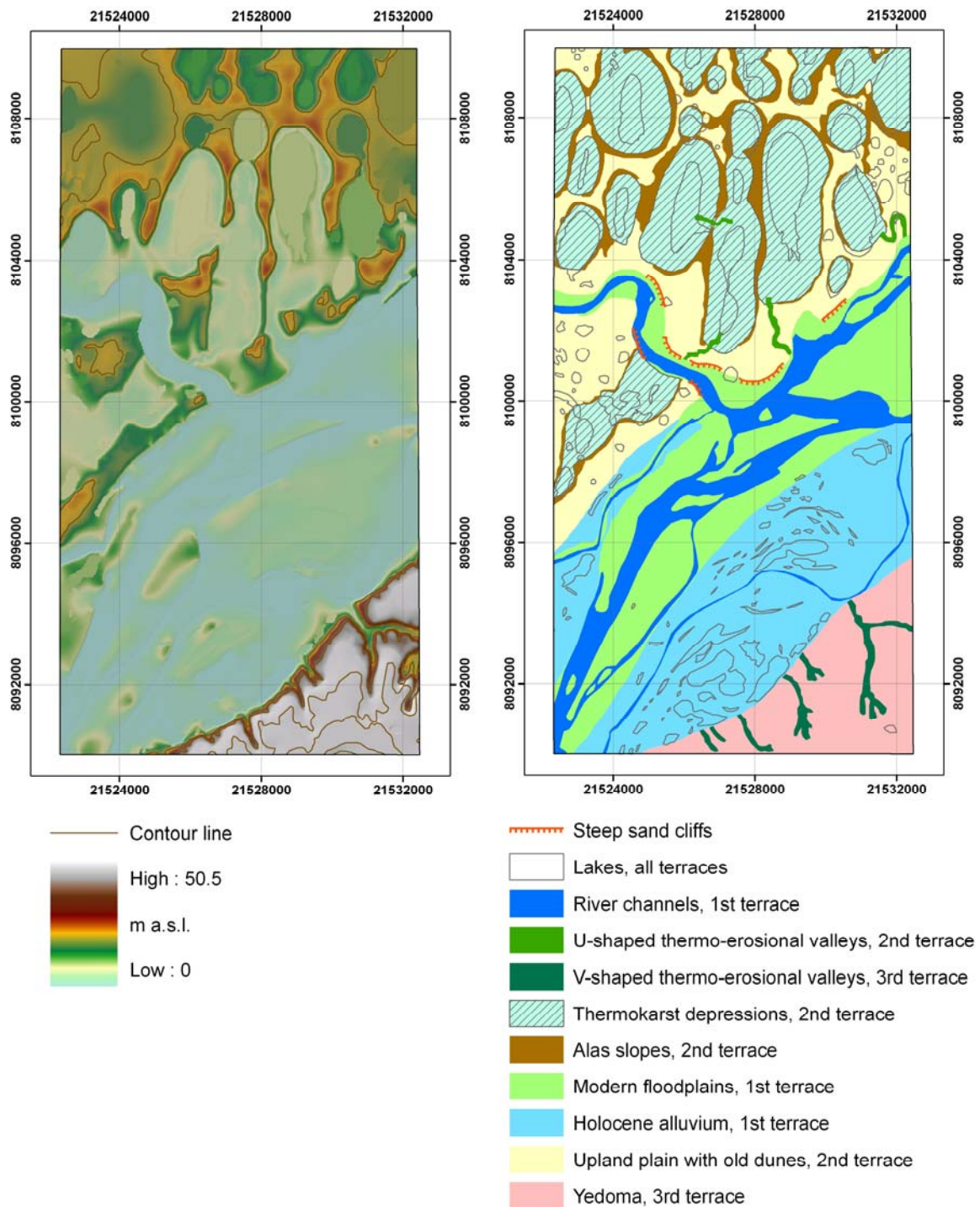


Fig.3. A - Digital Elevation Model (DEM) for the Turakh study site. B – DEM- and Corona-derived geomorphological map for the Turakh study site.

### 3. Data and Methods

#### 3.1. Field spectral measurements

Extensive field data were collected in the central and western Lena Delta, NE Siberia, during the joint Russian-German expedition “Lena Delta 2005” in summer 2005 (Ulrich & Grosse 2007). Fieldwork included geomorphological mapping, description of surface



properties including vegetation characteristics, pedological surveys, and collection of land-surface reflectance spectra. The field-reflectance spectra were measured in the spectral range 350 – 2500 nm with an ASD (Analytical Spectral Devices Inc.) FieldSpec Pro FR<sup>®</sup> (see Table 1 for instrument details). The measurements were conducted on predominantly clear-sky days around solar noon during 12-31 August 2005. Data were acquired following regular reflectance calibration with a Spectralon<sup>®</sup> white panel (Labsphere, Inc.). A scanning time of five seconds was used to acquire one spectrum. Since the scanning time of the instrument is 100ms (Tab. 1), each acquired spectrum represents an average of 50 individual measurements. Applying this averaging procedure increases the signal-to-noise ratio of the resulting reflectance measurement. For most measurements a bare foreoptic was used with an instantaneous 24° field of view. The footprint for nadir measurements at 1 m height covered a circle with 0.2 m radius. Additionally, when the operator was moving forward during the 5-sec-long recording process (e.g. profile measurements), the resulting spectral signal is integrated over a larger area that is more representative of the heterogeneous periglacial tundra surface typical of the investigation area.

Table 1. Instrument details for the ASD FieldSpec Pro Fr<sup>®</sup> field spectrometer.

Spectral range	350-2500 nm
Detectors	VNIR: photo-diode array (350-1000 nm) SWIR 1: scanning spectrometer (1000-1770 nm) SWIR 2: scanning spectrometer (1770-2500 nm)
Wavelength accuracy	±1nm
Ground resolution	Using bare optics (24° field of view) and 1m altitude resulting in a circle of about 0.2 m radius
Spectral resolution	3nm for 350-1000 nm 10-12 nm for 1000-2500 nm 512 for 350-1000 nm
Data channels	1060 for 1000-2500 nm interpolated data points: every 1 nm (2151 total)
Field of view	Variable (dependent on chosen foreoptic): 24° (bare optic), 1° or 8° (foreoptic lenses)
Data acquisition	1 scan every 100ms (0.1 s)

During the field work we carried out both point and profile measurements on specific surface types. Point measurements included 2 spectra each, averaging 50 individual measurements at sites selected for their distinctive surface characteristics. Profile measurements represent transects of continuous spectrometer samples taken at walking speed across a variety of surface types. The length of these transects varied between 40 – 150 m, and both start- and end-point coordinates were determined. Altogether, spectral measurements were accomplished at 19 locations with different surface characteristics. These include spectra from two sites on Turakh-Sise Island and eleven sites on Ebe-Basyn-Sise Island, both in the main study site in the western Lena Delta (Fig. 2, site A). Additionally, four sites on Samoylov Island and two sites on Kurungnakh-Sise Island in the central Lena Delta were measured (Fig. 2, site B). For each location and measurement, weather

conditions, soil properties, active layer depths, geomorphological situation, and vegetation properties were recorded in combination with the field spectra for detailed characterization of different surface types, e.g. polygonal structures, thermokarst units, floodplain levels, and sand banks (Ulrich & Grosse 2007).

Frequent unfavourable weather conditions accompanied by high cloud cover limited the acquisition of field spectral data in the Laptev Sea region. Due to these conditions, only a few days were available during the field campaign for successfully measuring reflectance spectra. We additionally tried to reduce errors by continuously referencing the field spectrometer with the Spectralon® white reference panel in between the target measurements.

### **3.2. Field spectra processing**

The resulting dataset of 519 field spectra was processed with ENVI™ and catalogued into separate spectral libraries for point measurements and profile measurements according to the investigated field sites. Further, detector splice correction was carried out and transformation to absolute reflectance measurements was based on the Spectralon® surface radiometry. The spectral regions associated with strong atmospheric water absorption around 1400 nm, 1900 nm, and above 2400 nm were masked out. Spectra acquired during profile measurements were averaged into one spectrum which represents the specific surface type.

Beyond extensive visual analyses of the spectral reflectance features, more detailed differentiation of the field spectra was achieved by applying the continuum removal technique (Clark & Roush 1984) for certain indicative wavelength ranges. Continuum removal is a normalization technique that allows the comparison of individual absorption features from a common baseline. The method is widely used for geological applications (e.g. van der Meer 2004) as well as for the discrimination of vegetation types (Schmidt & Skidmore 2003). The continuum is a convex hull fitted over the top of a spectrum. The line connects all local maxima of the spectrum. The first and the last values of the represented continuum are normalized to a relative value of 1. The location and the depth of individual absorption features are emphasized as the quotient of the continuum. We used the continuum removal technique for the chlorophyll absorption band at 680 nm and the water absorption band centered at ~1160 nm, determined from the 1120 – 1240 nm spectral range. We were able to compare and evaluate the vitality of vegetation cover due to the chlorophyll absorption depth and to differentiate the leaf water content as well as the surface moisture due to the water-absorption depth. Finally, after applying intensive visual analyses and the continuum removal technique, we grouped the profile spectra based on specific periglacial surface types (e.g.

polygonal tundra, thermokarst depressions units, and floodplain levels) and the Lena Delta geomorphological terraces.

### **3.3. Satellite data processing**

The Turakh study site (site A in Fig. 2) was covered by a subset of a Landsat ETM+ satellite image from 26 July 2001. The Landsat level 1G data (standard radiometric and geometric corrections) was atmospherically corrected by Schneider et al. (2009) according to Chavez (1996). A subset of the Turakh study site with bands 1 to 5 and 7 was created for the classification. The spectral bands cover the VIS, NIR, and SWIR region (400 – 2500 nm) with 30 m ground resolution. Conducting image classifications unsupervised and supervised techniques were used in the ENVI™ image processing software. At first, an unsupervised classification applying an *ISODATA cluster algorithm* (Tou & Gonzalez 1974) was accomplished for preliminary indication of the general class composition. A supervised classification (*maximum-likelihood algorithm*) based on training areas derived from our detailed field knowledge resulted in 15 land-cover classes. The n-dimensional visualizer tool in the ENVI™ software was applied to separate the class endmembers in the six-dimensional space of the Landsat dataset. Finally, the spatial distribution of the classification results was analysed and the class distribution for the main geomorphological units in the main study area was characterized using Regions of Interest (ROIs) derived from Geographic Information System (GIS) geomorphological mapping (Fig. 3).

Furthermore, radiance top-of-atmosphere CHRIS-Proba satellite data (29 June 2005, 17 m ground resolution at nadir) were used to create a soil map of a large thermokarst depression and adjacent slopes on Turakh-Sise Island. The European Space Agency (ESA) CHRIS-Proba mission provides hyperspectral satellite data in several spectral modes. We used the CHRIS land-channel mode 3 data with 18 spectral bands in the wavelengths between 438 – 1035 nm with 6 - 33 nm band width. The visual mapping was based on a Red-Green-Blue (RGB) color composite measured on 17/11/04 (Red NIR band 17 – 910 nm, Green NIR band 11 – 712 nm, Blue NIR band 4 – 551 nm).

### **3.4. Data for geomorphology, soils, and surface properties**

Altogether, characteristics and surface properties were collected at 73 locations in the Lena Delta study region (Ulrich & Grosse 2007). Described parameters included relief properties (i.e. exposition, curvature, estimated slope degree) and surface soil properties. Active-layer depths were measured using a steel rod. Vegetation characteristics were recorded for the measured spectrometer footprint (0.4 m diameter) by identifying the dominating species or genus, visually estimating its overall percentage cover, and describing plant phenology, vitality (fresh, drying, or dead), and canopy height. In addition, eight soil

profiles were pedologically analysed, five from a catena within a thermokarst depression. Soils were classified according to American (Soil Survey Staff 2003) and German (AG Boden 1994) soil taxonomies describing horizon succession, texture, structure, colour, humus content, root density, and reduction-oxidation (redox) potential. Soil samples were additionally analysed for grain-size composition and organic-carbon content using a laser particle analyser (Beckmann Coulter LS 200) and a CNS-Analyser (Elementar Vario EL III), respectively (Tab. 2).

Table 2. Summary of analysed soil sample parameters.

Location	Soil-Tax name	Horizon (soil-tax)	Depth (m b.s.)*	Lithology	pH	TOC (%)	TN (%)	C/N	Grain size (µm)
Samoylov Island	Glacic Psammoturbel	Ah	0.1 – 0.12	silt, sand	5.77	1.22	0.10	11.20	220.3
		B1w	0.12 – 0.15	silt, sand	5.85	0.94	0.10	8.70	215.2
		B2wjj	0.15 – 0.22	silt, sand	5.94	0.86	0.10	8.48	207.5
		B3wjj	0.22 – 0.28	silt, sand	6.31	1.90	0.18	10.23	183.2
	Psammentic Aquorthel	Ah	0 – 0.03	fine-sand	6.9	0.53	0.05	10.43	211.6
		Oi1	0.03 – 0.06	silt, sand	6.99	1.30	0.09	13.63	204.3
		Oi2	0.06 – 0.12	peat	7.11	1.50	0.09	16.20	376.8
		ABg	0.12 – 0.17	silt, sand	6.80	1.47	0.08	16.67	287.1
	Bg1	0.17 – 0.22	middle-sand	6.46	0.56	0.07	7.58	221.9	
	Bg2	0.22 – 0.45	middle-sand	6.02	0.57	0.06	9.34	221.5	
Ebe-Basyn-Sise Island	Typic Psammoturbel	Ah	0 – 0.04	fine-sand	4.65	2.14	0.20	10.47	198.9
		Bjj	0.04 – 0.1	middle-sand	4.68	0.22	0.04	5.46	249.3
		Ah2jj	0.1 – 0.18	fine-sand	4.63	0.39	0.08	4.91	211.1
		Bw1	0.18 – 0.4	middle-sand	4.81	0.14	0.02	5.0	269.1
		Bw2	0.4 – 0.65	middle-sand	4.72	0.06	0.02	3.42	276.9
Turakh-Sise Island (thermokarst depression)	Typic Psammoturbel	Ah	0 – 0.03	fine-sand	4.87	1.04	0.12	8.18	203.8
		Abjj	0.03 – 0.36	middle-sand	4.75	0.27	0.04	6.9	253.3
		Bjj	0.36 – 0.46	middle-sand	4.71	0.30	0.05	6.03	252.2
		Bw	0.46 – 0.75	middle-sand	4.73	0.12	0.03	3.78	272.9
	Typic Psammoturbel	Ah1	0 – 0.05	fine-sand	4.57	2.61	0.2	13.09	169
		Bjj	0.05 – 0.13	middle-sand	4.95	0.21	0.03	6.41	284.5
		Ah2	0.13 – 0.2	middle-sand	4.88	0.64	0.07	8.46	183.7
		Bw1	0.2 – 0.4	middle-sand	4.71	0.09	0.01	5.11	251.6
		Bw2	0.4 – 0.8	middle sand	4.72	0.06	0.01	3.94	291.4
	Psammentic Aquorthel	Bg1	0.03 – 0.12	middle-sand	4.34	1.86	0.18	9.86	147.8
		Bg1	0.12 – 0.18	middle-sand	4.31	1.36	0.11	12.09	203.5
		Bg2	0.18 – 0.7	middle-sand	4.41	0.15	0.03	4.22	301.8
	Typic Aquorthel	Bg2	0.12 – 0.2	fine-sand	4.28	4.48	0.35	12.52	187
Typic Fibristil	Oe	0.1 – 0.3	peat	4.06	4.33	0.27	15.71	127.9	
	Oi2	0 – 0.1	peat	4.48	9.83	0.55	17.74	157.3	
	L	0.3 – 0.5	peat, silt	3.98	2.56	0.18	13.61	117.9	
	C	0.5 – 0.6	middle-sand	4.18	0.11	0.02	4.52	267.5	

\* m b.s. – meters below surface

The general relief of the Turakh study area was analysed with a raster digital elevation model (DEM) created with the TOPOGRID tool of ArcGIS™ (ESRI) (Fig. 3a). The DEM is based on manually-digitized elevation data (contours, elevation points, streams, lakes) from a topographical map (1:100,000). This topographic map series was originally derived from finer-scale maps which are, in turn, based on aerial images, at a scale of 1:40,000 or better. The local relief has an elevation range of 0-50 m, providing enough topography to derive slope profiles, basin and upland morphology, and major drainage networks. The contour interval is 10 m. Generally, steep bluffs along river channels are poorly captured. Though not very useful for hydrological research, the DEMs from such topomaps are of sufficient quality for geomorphological mapping, as already described in Grosse et al (2006). Comparison with a high-resolution Corona satellite image (22 June 1964, panchromatic, 2.5 m) also indicates reasonably good map qualities. The elevation grid was generated in 30 m cells to match the

Landsat pixel size. For geomorphological mapping we used DEM field-survey knowledge, high-resolution Corona data, and the Landsat ETM+ image (26 July 2001) (Fig. 3b).

## **4. Results**

### **4.1. Spectral properties of periglacial surfaces from field spectrometry**

The individual measurement sites are characterized by a range of typical Arctic tundra vegetation communities: sedges, grasses, mosses, lichen, herbs, and low shrubs (Tab. 3). In most cases canopy height was less than 30-50 cm. Vegetation coverage ranged from 0-100%, strongly depending on geomorphological position and drainage conditions. Measured active-layer depths at the sites ranged from 25-100 cm, depending on vegetation type, local meso- and micro-relief, drainage conditions, and soil lithology.

Twelve different spectral surface classes (numbered using Roman numerals) could be extracted from the field spectra (Fig. 4). The good spectral separation indicates significant differences in surface properties between the three terrace levels of the Lena Delta. Furthermore, it was possible to spectrally separate smaller land-cover units typical of periglacial landscapes (e.g. polygonal structures). The most important factors determining spectral separability are the type of vegetation communities and vegetation vitality; both are strongly influenced by soil moisture and micro-geomorphological conditions at individual sites. The differences in these vegetation properties result in varying water, chlorophyll, or cellulose absorption features, and thus specific reflectance characteristics (Tab. 3). The reflectance shapes of the spectral signatures vary, especially in the VIS (400 – 700 nm) and NIR (700 – 1300 nm) regions. The spectra shapes in the SWIR2 region (2000 – 2400 nm) differ generally due to the cellulose absorption features of dry plant material. Differences in the red edge (690 – 740 nm), characterizing the chlorophyll concentration, were representative of plant vitality.

Applying the continuum-removal technique for the field spectral classes allowed a detailed differentiation of the spectral absorption features. The results indicate significant differences in surface conditions and vegetation cover at the individual sites. The deepest chlorophyll absorptions (Fig. 5a) are recognizable in classes II, IX, XI, and XII, and represent surfaces with fast-growing fresh grass and sedge-dominated vegetation. These classes represent the higher and lower floodplains of the first Lena Delta terrace and a recently-drained thermokarst lake depression of the third terrace. They consist of unstable or young surfaces with a more-or-less constantly-changing accumulation regime and generally very wet hydrological conditions. However, class IX spectra show heterogeneous absorption depths. The spectra representative of the main third terrace surface (class I) and the marshy lake (class VII) also show deep chlorophyll absorptions. Medium chlorophyll absorption depths represent the spectra of classes III, V, VI, and X, probably connected with the

Table 3. Field spectra and related surface characteristics for each field spectra class (Fig. 4) as well as comparable land-cover classes derived from Landsat ETM+ classification.

Class	Delta terrace	Field spectral characteristics	Related surface characteristics	Comparable land-cover classes based on Landsat classification
I	3 <sup>rd</sup>	MaRe: 38 % at 1130 nm; VIS: green reflectance shows local maximum; ChloAb: clear but not deep; RE: distinct, bend and decrease at 740 nm; NIR: increasing curve; SWIR: intimated cellulose absorption; WaAb: clear but slightly	Relatively dry and flat 3 <sup>rd</sup> terrace surface, without polygonal structure or irregular cracks, nearly homogeneous vegetation, <b>drier sites with <i>Salix sp.</i>, mosses and lichens, moister sites with green grasses and sedges on moos cushion, closed vegetation cover</b> , active layer depth average 40 cm	Class 14: 3 <sup>rd</sup> terrace surface (Ice Complex)
II	3 <sup>rd</sup>	MaRe: 56 % at 1150; VIS: local maximum in green reflectance region, absorption in red pigment region; ChloAb: deep; RE: high, bend and decrease at 755 nm; NIR: decreasing curve down to 920 nm; SWIR: high, peaked bell-shaped curve; WaAb: very deep	Thaw depression, dry to moist surface after drainage of a thermokarst lake ca. 1985 +/-5 years, homogeneously <b>tall grasses</b> (growth height >50 cm), with many <b><i>Salix sp.</i></b> on numerous thermokarst hills, <b>closed vegetation cover</b>	
III	2 <sup>nd</sup>	MaRe: 31 % at 1140 nm; VIS: low increase to red reflectance, decrease in green reflectance; ChloAb: slightly; RE: short and not steep, low shift to shorter wavelength; NIR: subhorizontal to low, increasing curves; SWIR: intimated cellulose absorption features; WaAb: clear but slight	Low-centre polygonal tundra on the 2 <sup>nd</sup> terrace, <b>poorly drained centres with immersed sedges and <i>Sphagnum sp.</i></b> , elevated <b>dryer rims with closed vegetation cover of dry mosses, lichens, herbs, and dwarf shrubs</b> , active layer depth average 45 cm, somewhat deeper in elevated rims	Class 12: Relatively dry surface; dwarf shrubs and grasses
IV	2 <sup>nd</sup>	MaRe: 34-42 % at 1650 nm; curve increases in VIS, remains relatively constant in NIR and SWIR; ChloAb: none to intimated; RE: very short; SWIR: small dip at 2200 nm (probably due to clay mineral absorption); WaAb: No	Very dry elevated sand banks, barren or poorly-vegetated with isolated <b>lichens, mosses, herbs, dwarf shrubs or grasses, vegetation cover 0 – 60%</b> , growth height: max. 20 cm, active layer depth average 1 m	Class 1 and 2: Fluvial sand banks; barren to vegetated
V	2 <sup>nd</sup>	MaRe: 30 % at 1280 nm; VIS: flat curve with low increase; ChloAb: indistinct; RE: very short with bend at 730 nm; NIR: increasing curve; SWIR: distinct cellulose absorption; WaAb: none at 930 – 1030 nm, slightly at 1120 – 1240 nm	Thaw depression slopes, sandy, dry hummocky surfaces, homogeneous distribution of <b>dry mosses, crust lichens and herbs, closed vegetation cover</b> , growth height: 2 – 10 cm, active layer depth average 80cm	Class 13: Slopes of thermokarst basin, very dry and hummocky; <i>Dryas sp.</i> , sedges, mosses
VI	2 <sup>nd</sup>	MaRe: 20-23 % at 1120 nm; VIS: flat curves with little increase; one with intimated higher green reflectance at 550 nm; ChloAb: slightly; RE: short, bend at 720 – 730 nm; NIR: low increasing curves up to 1300 nm; SWIR: intimated cellulose absorption features; WaAb: indistinct at 930 – 1030 nm, slight at 1120 – 1240 nm	Thaw depressions, moist to very-moist areas with indistinct to distinct polygonal structures, vegetation is dominated by <b>sedges, mosses, and <i>Salix sp.</i></b> , poorly-drained sites dominated by sedges and <i>Sphagnum sp.</i> , drier sites dominated by <i>Salix sp.</i> , <b>almost closed vegetation cover partly opened by stagnant water</b> , growth height: on average 30cm, active layer depth average 30 – 40 cm	Class 10: Wet areas, thermokarst basin with polygons and ponds; sedges, mosses, few <i>Salix sp.</i> Class 11: Moist areas with indistinct polygonal structures, little surface water; <i>Salix sp.</i> , sedges, mosses
VII	2 <sup>nd</sup>	MaRe: 41 % at 1090 nm; VIS: convex increase to local maximum in red reflectance (640 nm); ChloAb: clear but not too deep; RE: relatively high, bend and small decrease at 750 nm; NIR: decreasing curve down to 920 nm; SWIR: slightly bell-shaped curve; WaAb: very deep	Marshy lake, <b>closed vegetation cover of reddish <i>Arctophila sp.</i> and <i>Sphagnum sp.</i></b> , active layer depth: ~40 cm	Class 5: Shallow water, densely vegetated, marshy
VIII	1 <sup>st</sup>	MaRe: 26 % at 1300 nm; very flat, low, increasing curve in VIS and NIR; ChloAb: no; RE: no; SWIR: distinct cellulose absorption features; WaAb: no	River banks dominated by driftwood mark the seasonal and episodic floodplains	

IX	1 <sup>st</sup>	MaRe: 23% - 33% at 1100 nm; VIS: green reflectance shows local maxima, low decrease to red reflectance; ChloAb: distinct and deep; RE: distinct, bend at 740 nm; NIR: decreasing curves down to 920 nm, SWIR: very slightly curved; WaAb: relatively deep	Higher non-flooded areas, often low-centred polygonal structures in different occurrence, vegetation is dominated by <b>grasses, dwarf shrubs, herbs and mosses, poorly drained sites dominated by immersed sedges, drier sites dominated by <i>Salix sp.</i></b> , closed vegetation cover, active layer depth depends on drainage and vegetation: 30 – 60 cm	
X	1 <sup>st</sup>	MaRe: 34-37 % at 1130 nm; VIS: increasing curve to local maximum in red reflectance, decrease in green reflectance; ChloAb: slight, indistinct; RE: short, bend at 730 nm; NIR: increasing curve; SWIR: intimated cellulose absorption features; WaAb: none at 930 – 1030 nm to slightly at 1120 – 1240 nm	Higher floodplains, episodically flooded, relatively dry to very moist areas, very flat relief vegetated by <b>grasses, sedges, <i>Salix sp.</i> and mosses, closed vegetation cover</b> , growth height: on average 30 – 40 cm, active layer depth average 35 – 40 cm	Class 8: Upper floodplain; dominated by <i>Salix sp.</i> , sedges and mosses
XI	1 <sup>st</sup>	MaRe: 25-30 % at 1140 nm; VIS: local maximum in green reflectance region, decrease to the red pigment region; ChloAb: deep; RE: steep with distinct bend at 740 nm, NIR: horizontal; SWIR: slightly bell-shaped curve; WaAb: slight	Seasonal floodplains, moist, poorly-drained surfaces, <b>sedges, mosses, <i>Salix sp.</i> and <i>Eriophorum sp.</i>, fragmentary cover (50 – 80 %)</b> , growth height: ~30 cm, active layer depth: 50 – 60 cm	Class 6: Lower floodplain and wet valley floors of the 3 <sup>rd</sup> terrace
XII	1 <sup>st</sup>	MaRe: 51 % at 1100 nm; VIS: increasing curve to high local maximum in red reflectance with a dip in green reflectance; ChloAb: deep; RE: high, bend distinct at 750 nm; NIR: decreasing curve down to 920 nm; SWIR: high peaked bell-shaped curve; WaAb: relatively deep	Seasonal floodplains dominated by <b>reddish <i>Arctophila sp.</i></b> , very moist areas, <b>vegetation cover: 80 – 90 %</b> , growth height: >60 cm, active layer depth: 70 – 80 cm	Class 7: Lower floodplain, seasonally inundated; dominated by <i>Arctophila sp.</i>
MaRe: maximum reflectance of the spectra; VIS: visible spectral region (400-700 nm); ChloAb: chlorophyll absorption (near 680 nm); RE: red edge (690-740 nm); NIR: near infrared spectral region (800-1300 nm); SWIR: shortwave infrared spectral region (2000-2400 nm); WaAb: water absorption (at 930-1030 nm and 1120-1240 nm)				

advanced phenological age of the *Salix sp.* in some places as well as with the tundra vegetation composition resulting from poor drainage (class III, VI, X) or dryness (class V) at the sites. These classes consist of polygonal structures and diverse parts of thermokarst depressions on the second terrace, as well as episodically-flooded areas of the first terrace. Larger differences in absorption depths exist within classes III and X. The spectral signatures of classes IV (dry sand banks) and VIII (driftwood-dominated river banks) indicate insignificant chlorophyll absorption. In both classes major chlorophyll absorption is absent because live vegetation is not prevalent on these surfaces.

The deepest water absorption, between 1120 – 1240 nm (Fig. 5b), exists in spectra class VII along with *Sphagnum sp.*, generally high plant water content, and wet surface conditions in the marshy lake. Deep but heterogeneous water absorption is also recognizable in class IX (higher non-flooded areas). Surface spectra of this class are influenced by moist surface conditions with numerous low-centre polygon ponds. The polygonal tundra (class III) and thermokarst depressions (class VI) of the second Lena Delta terrace are also characterized by sporadically moist surface conditions; i.e. these spectra classes are characterised by heterogeneous medium to deep water-absorption bands. The considerable absorption depth

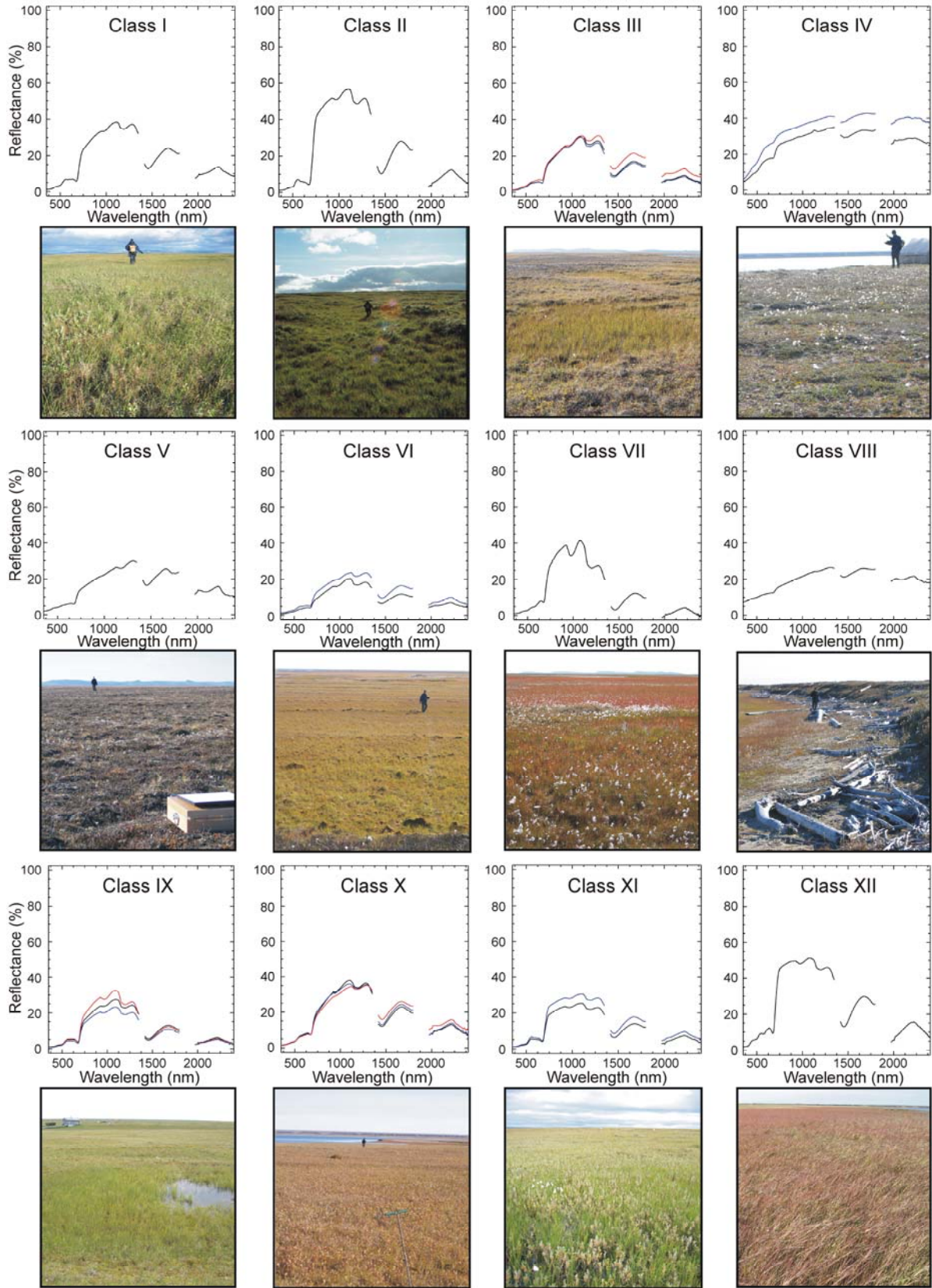


Fig.4. Field spectra classes representing different periglacial surface conditions. Field spectra classes were numbered using Roman numerals. For detailed class descriptions see table 3.



of class II (thaw depression, 3<sup>rd</sup> terrace) is probably connected with the high water content of fresh tall grasses growing in nutrient-rich sediments of a recently-drained lake, despite well-drained surface conditions. Seasonal and episodic floodplains characterize classes XI, XII, and X which reveal medium to low water-absorption depths. Surface conditions of these classes vary from well-drained to poorly-drained with surface water. In spite of moist conditions, in some places the spectral signatures are probably more influenced by leaf water content and the advanced phenological stage of *Salix sp.* in the local vegetation composition. Class I is characterized by relatively dry surface conditions on the 3<sup>rd</sup> terrace, and thus also slight water absorption. Low water absorption is representative of classes IV and VIII, reflecting the very-dry surface conditions of sand banks and driftwood-dominated river banks. Finally, the low-water absorption of slope surfaces along a thermokarst depression (class V) was caused by the homogeneous distribution of dry mosses and lichens and dry sandy soils at these sites due to good slope drainage.

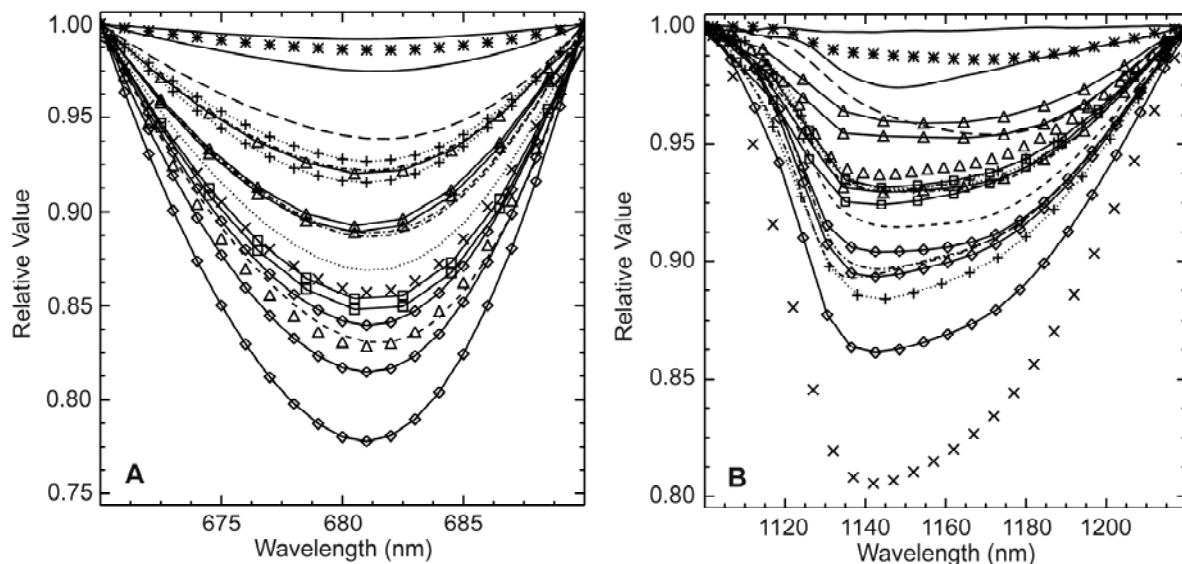


Fig.5. Comparison of A) continuum-removed chlorophyll absorption at 680 nm and B) water absorption between 1120 – 1240 nm for all field spectral classes. Signatures: 3<sup>rd</sup> Lena Delta terrace: class I dotted, class II dashed; 2<sup>nd</sup> terrace: class III dash-dot, class IV solid-line, class V thick dashed, class VI plus-dotted, class VII cross; 1<sup>st</sup> terrace: class VIII asterisk, class IX diamond, class X triangle-line, class XI square, class XII triangle.

#### 4.2. Land-cover classification of the Turakh study site

The Landsat ETM+ classification consists of 15 main classes (numbered using Arabic numerals) resulted from training sites derived from our detailed field knowledge (Fig. 6). Additionally, after analysing the unsupervised classification results we differentiate water classes from classes for vegetated or barren fluvial sand banks. The classification covers each geomorphological terrace of the Lena Delta in the Turakh study area (201.4 km<sup>2</sup>). The Landsat classification indicates a good spectral separation of geomorphological landscape units and their specific periglacial surface conditions in the Lena Delta. The classification also reveals spectral characteristics of various periglacial features on a sub-terrace level, like river

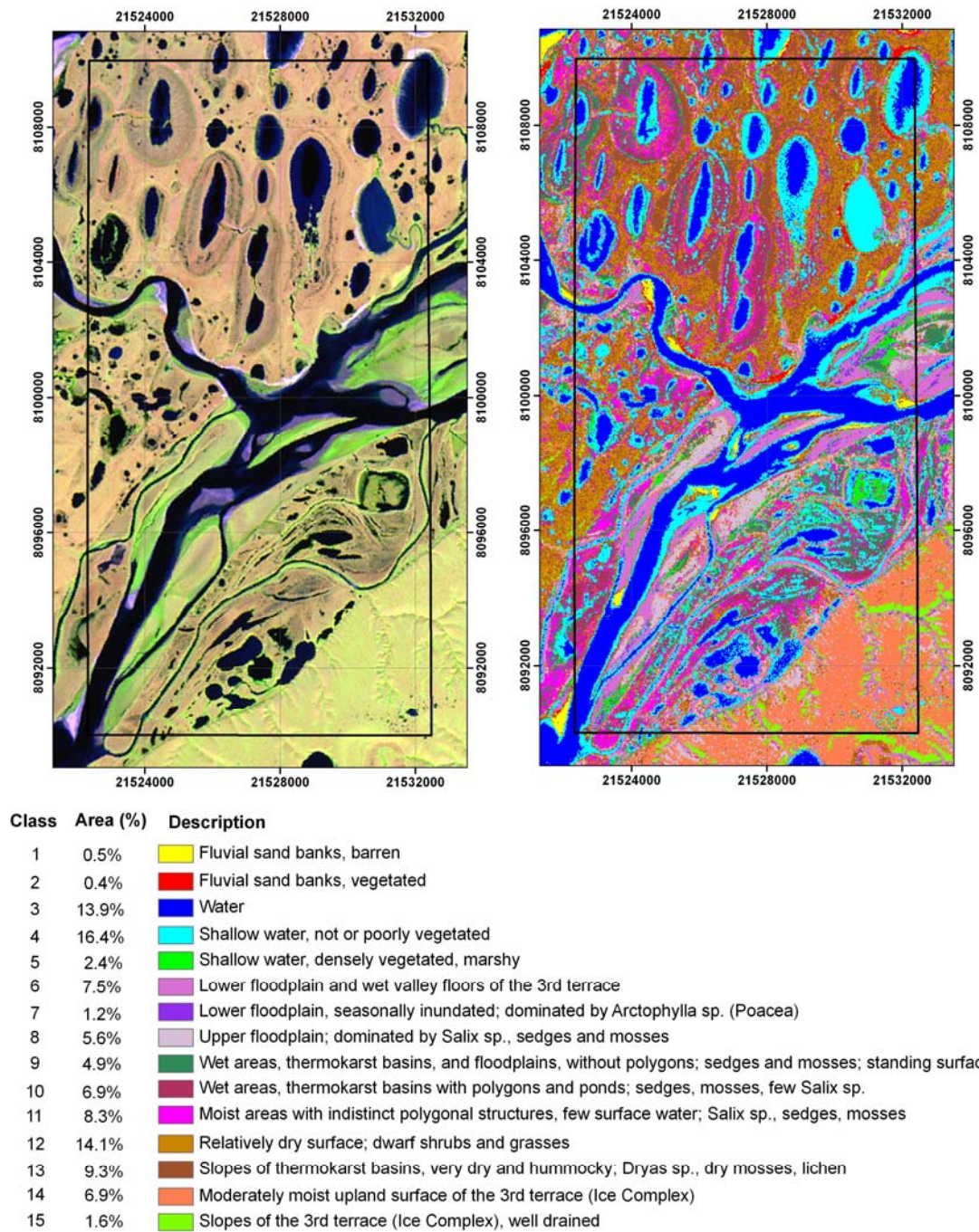


Fig.6. Landsat ETM+ image (left) and derived land-cover classification (right) of the Turakh study site. Land-cover classes were numbered using Arabic numerals. Inner frames indicate the area of the DEM in Fig 3 and the area used for calculating class distribution. Map projection: Gauss-Krüger zone 21, Pulkovo 1942.

sand banks, sand dunes, thermokarst depressions and their slopes, overgrown ponds, floodplain areas, and thermo-erosional valleys. Moist and wet surface classes with relatively low reflectance values dominate the study area. Only about one-third of the entire area is covered by drier surface classes with generally higher reflectance values in the satellite image, represented by land cover classes 1, 2, and 12 – 15.

The DEM-derived geomorphological map shows the distinct character of the individual Lena Delta terraces (Fig. 3b). Whereas the low-lying 1<sup>st</sup> terrace units are spread out along

the river channels, the 2<sup>nd</sup> and 3<sup>rd</sup> terraces consist of more compact areas. The second terrace is dominated by strongly NNE-SSW-oriented thermokarst basins and lakes (53%). Other major features on the 2<sup>nd</sup> terrace include U-shaped thermo-erosion valleys and the wide slopes of thermokarst basins. In contrast, on the 3<sup>rd</sup> terrace thermo-erosion valleys are mostly V-shaped, and the sparsely-distributed thermokarst basins show a smaller degree of orientation.

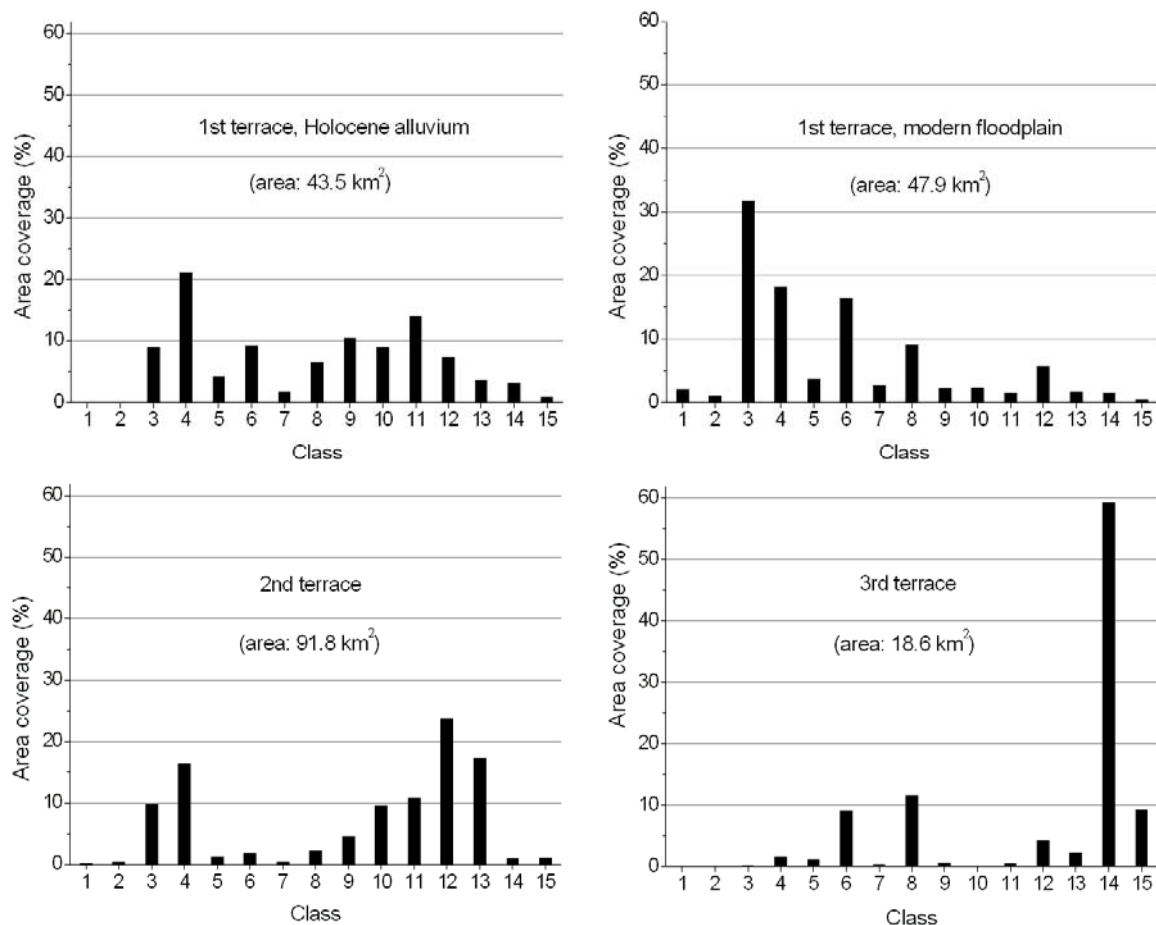


Fig.7. Calculated distribution of Landsat-derived land-cover classes for the main geomorphologic units at the Turakh study site.

Based on the geomorphological map units, the distribution of land-cover classes was calculated for the individual Lena Delta terraces (Fig. 7). The class distributions indicate the geomorphological differences and characterize the main units at the Delta study site. In general, the 1<sup>st</sup> terrace is dominated by moist and wet surface classes 6, 7, 8, and 9, indicating active fluvial-deltaic processes. On the contrary, most of the 2<sup>nd</sup> and 3<sup>rd</sup> terraces are characterized by the drier surfaces of classes 12, 13, 14. Both terraces are much older than the 1<sup>st</sup> terrace (Schirrmeister et al. 2003). On both terraces the occurrence of thermokarst is an important causal factor for the presence of moist and wet land-cover units. The bottoms of the large thermokarst depressions are often moister than the surrounding uplands, because drainage is lacking and active-layer depths are shallow. The basins usually

contain many low-centre polygons with ponds (classes 10, 11) and large, oriented thermokarst lakes. The drainage on the 3<sup>rd</sup> terrace often results in characteristically wet thermo-erosional valleys and ravines (Fig. 3b). On both terraces, steeper slopes along elevated uplands feature relatively well-drained surfaces. In some poorly-drained upland areas many small ponds occur, possibly indicating the initiation of thermokarst formation in these areas.

#### **4.3. Pedological map of a thermokarst basin**

In addition to the Landsat classification, a hyperspectral CHRIS-Proba image and a field pedological survey was used for soil mapping to better understand spatial distribution of soil types within thermokarst depressions on the 2<sup>nd</sup> Lena Delta terrace (Fig. 8). The 17/11/04 CHRIS-Proba RGB composite was chosen for mapping because spectral band 17 is located on the major water absorption band, band 11 on the red-edge region, and band 4 on the green vegetation reflectance peak.

The thermokarst depression is part of the typical relief of the 2<sup>nd</sup> Lena Delta terrace characterized by widespread, ellipsoidal, and roughly NNE-SSW-oriented thaw lakes and basins (see also Morgenstern et al. 2008). The studied depression is ca. 4.5 km long by 1.5 km wide and contains two remnant thermokarst lakes interconnected by a small channel. The lakes have broad, ca. 1 m deep submerged shelves and a central basin up to 10 m deep (see lakes in Fig 6: land-cover classes 3 and 4). The main basin floor sits about 6-8 m below the surrounding uplands, resulting in a total thermokarst subsidence of 16-18 m for the surveyed basin (Lantuit et al. 2007). The lakes are also connected via an outflow to a main delta channel to the south. Driftwood on the basin floor and water distribution in a June 1964 Corona satellite image indicate that during the spring ice breakup the outflow is reversed because water levels increase by several meters in the main channel and parts of the basin are temporally inundated. In the subaerial part of the basin close to the lakes, sand dunes are partially stabilized by vegetation. The surface between dunes and marginal basin slopes is characterized by moist-to-inundated sedge tundra; ice-wedge polygon ridges are distinguishable. The basin slopes are very well-drained and consist of dry sandy surfaces with slope angles between 8 – 15°. The initiation of a similar lake-basin system nearby (Lake Nikolay, same delta terrace, ca. 40 km to the NNE) has been dated by Andreev et al. (2000) to the early Holocene (about 10,300 cal. yr BP).

Based on general knowledge about the influence of soil type on surface drainage and vegetation cover, we were able to map the probable distribution of soils from CHRIS-Proba spectral information. The map contains five pedological units (*Typic Psammorthel*, *Typic Psammoturbel*, *Psammetic Aquorthel*, *Typic Fibristil*, and a complex consisting of *Glacic* or *Typic Aquiturbel* and *Typic Aquorthel* or *Typic Histoturbel*) named according to the US Soil

Taxonomy (Soil Survey Staff 2003). The soil classes are concentrically arranged within the thermokarst depression (Fig. 8), accurately reflecting the relief and drainage situation (i.e. soil moisture) and, therefore, changes of the vegetation cover as well. In general, all investigated soils consisted of fine to coarse-grained sand and showed more-or-less strong signs of cryoturbation and redox reaction. The soil organic carbon increases from the slope towards the lake. Carbon/Nitrogen (C/N) ratios increase with decreasing carbon decomposition inside the soil profiles as well as within the catena. The pH values of all soils range between 4 and 5 and nitrogen contents are low in all samples (Tab. 2). The soils clearly vary in their drainage situations according to the relief level and slope inclination. The well-drained slopes of the thermokarst depression represented by lime-green colours in the CHRIS-Proba image are dominated by *Typic Psammoturbels* based on fluvial fine-to-medium-grained sands. These poorly-developed soils have a very low organic content (0.2-2.5% C<sub>org</sub>) and an active-layer depth of 65 – 80 cm. Strong solifluction and cryoturbation processes resulted in the formation of the typical hummocky surface on upper slopes (see Fig. 4, class V). Farther down the slope the drainage conditions worsen, resulting in the presence of *Psammetic Aquorthels* (0.2-1.4% C<sub>org</sub>). Because of similar pedological conditions, the uplands surrounding the depression, represented by greyish-green colours in the CHRIS-Proba image (Fig. 8), are assumed to also consist predominantly of this soil type. The very wet bottom of the thermokarst depression (dark-greyish colours) consists of an indistinct to distinct polygonal micro-relief covered by a heterogeneous soil complex of *Glacic* or *Typic Aquiturbels*, and *Typic Aquorthels* or *Typic Histoturbels*. The *Typic Aquorthels* (up to 4.5% C<sub>org</sub>) and *Typic Histoturbels* are situated in poorly-drained centres of low-centre polygons characterized by water levels at the soil surface and active-layer depths around 30 cm. In some places, accumulated organic material formed peat horizons. The more elevated polygon rims are composed of *Glacic* and *Typic Aquiturbels*, and characterized by a distinctly deeper water table, less accumulation of organic matter, and cryoturbation features. The lowermost parts of the thermokarst depression close to the lakes were dominated by wet *Typic Fibristils* based on peaty lake and floodplain sediments (up to 10% C<sub>org</sub>). The alteration of peat and mineral horizons indicate periodic flooding of the thermokarst lake shore. In comparison, surface conditions are drier due to the lack of low-centre polygons, indicated by brighter grey colours in the CHRIS-Proba image. Along steep erosional cliffs and especially on the western shore of the northern lake, poorly-developed soils (*Typic Psammorthel*) were located in a sand dune setting typical of some 2<sup>nd</sup> terrace areas. These soils are easily visible due to the high reflectance of sand (white colours).



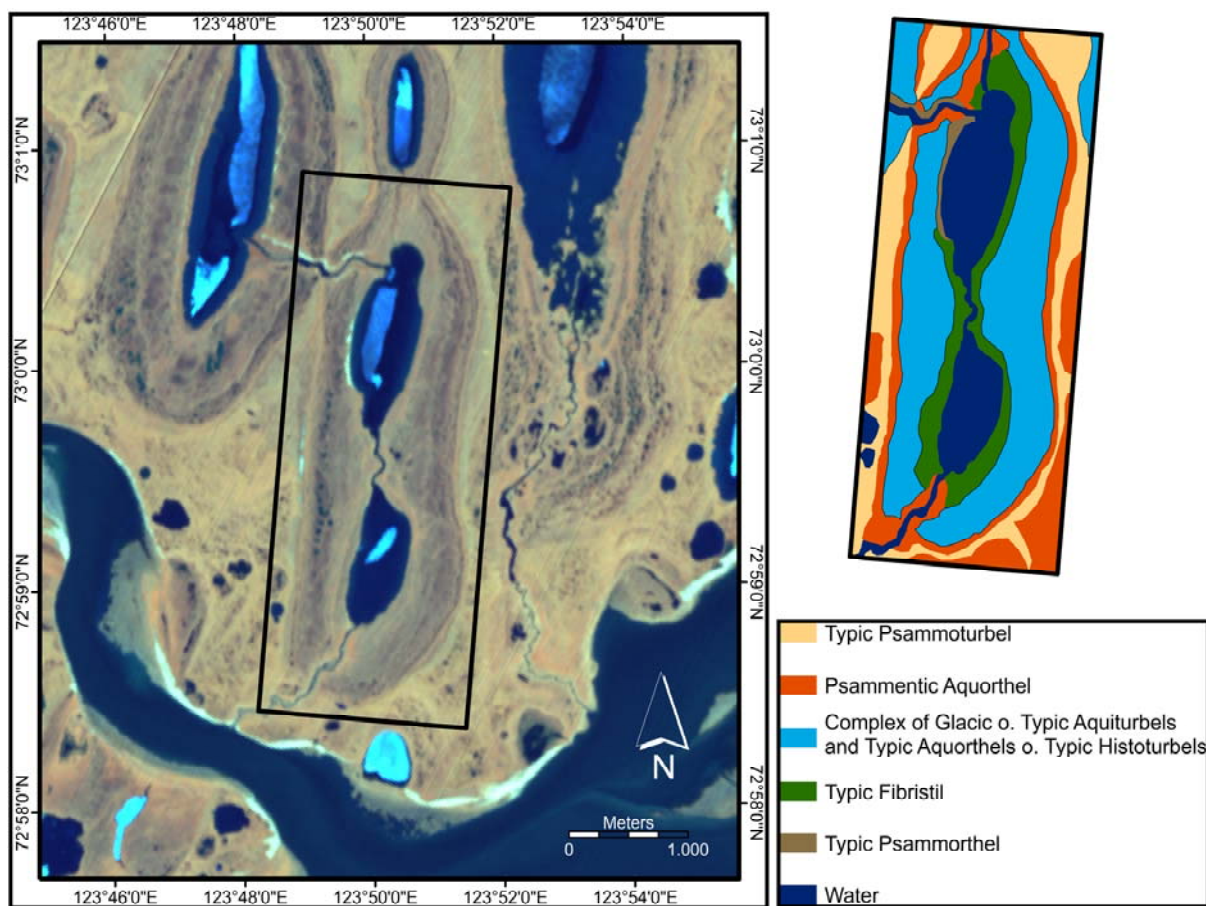


Fig.8. Left: 17/11/04 CHRIS-Proba satellite image in RGB composite. The black frame locates the soil map. Yellow stars mark sites of investigated soils. The light blue areas within the dark blue water bodies are residues of ice cover at the end of June. Right: Soil map for a typical thermokarst depression on the 2<sup>nd</sup> Lena Delta terrace.

## 5. Discussion

### 5.1. Characterization of periglacial surface features by field spectrometry

The field spectra classes, based on spectral properties of periglacial surfaces, vary considerably between the Lena Delta terraces. The surface conditions of the terraces are determined by their geomorphological, hydrological, and pedological situation as well as the vegetation cover. The most important factors influencing the spectral signatures are the type and the state of the vegetation cover, which in turn are determined largely by these surface conditions and elucidated in the VIS and NIR spectra shapes. Thus, the characterization and analysis of spectral signatures, general reflectance properties, and absorption features offer information about the individual surface characteristics and allow the spectra to be classified into specific surface classes (Fig. 4, Tab. 3). We consider the spectra from the tundra landscapes of the Lena Delta to be a mixed signal of vegetation, soils, and moisture (soil or surface).

Most acquired spectra show low general-reflectance values, probably due to both the high surface-moisture content in the Lena Delta and a decrease in vegetation vitality which

had already begun during the spectra acquisition in late summer (e.g. classes VI and X). Distinctly low reflectance associated with dry or dead vegetation is recognizable in classes V and VIII, which are additionally characterised by very dry surface conditions. However, the general reflectance also depends on the percentage vegetation cover at individual sites. In case of very moist surface conditions, the reflectance is not decreased if a closed vegetation cover dominates the general reflectance. For instance, classes VII and XII show high reflectance values even under moist to very-moist surface conditions. When the vegetation cover is decreased, the wet soil surface or the presence of surface water reduces the total reflectance (e.g. Weidong et al. 2002). Some of our field spectra show a low reflectance despite high vegetation vitality, which is possibly related to the very moist surface conditions on-site (e.g. class IX and XI) and also to a low percentage vegetation cover (e.g. class XI). Soil reflectance increases with decreasing vegetation cover for dry soils as suggested by e.g. Pinker & Karnieli 1995, and is observed here in dry elevated sandbanks which differ in vegetation cover (class IV).

Specific vegetation properties can be evaluated from individual absorption features and local maxima or minima, especially in the VIS and NIR regions of the field spectra. Spectra indicating high vegetation vitality (e.g. class II, VII, and XII) are characterized by deep chlorophyll absorptions (Fig. 5a) and high and steep red-edge slopes with a drop at 740 – 750 nm (Fig. 4), indicating a relationship between red-edge shape and chlorophyll concentration, and thus plant vitality (Horler et al. 1983, Rock et al. 1988, Curran et al. 1990, Pinar & Curran 1996). In contrast, a short or gentle red-edge bending around 730 nm is correlated with medium-to-low chlorophyll absorption; this signature is typical of classes V, VI, and X. The reflectance in the red-edge region is not significantly influenced by background surface conditions, so the red-edge characteristics can be attributed solely to the vegetation cover (Horler et al. 1983). According to Elvidge (1990), spectra with high green reflectance and deep pigment absorption in the VIS range as well as deep chlorophyll absorption characterize surfaces with fresh green vegetation (e.g. class II and XI). The spectra from surfaces with advanced phenological vegetation age show decreased green reflectance, poor chlorophyll absorption, and therefore an increased red reflectance in the VIS as well as stronger cellulose absorption features in the SWIR2 (2000 – 2400 nm). Exceptional cases are classes VII and XII with distinctly increasing curves in the VIS despite the high vitality of local vegetation. This is probably associated with the plant pigmentation of the reddish *Arctophila* sp. on wet sites (Fig. 4). Additionally, all spectra characterized by vegetation cover with high vitality show generally down-sloping curves in the NIR from 920 nm towards the long wavelengths.

The surface moisture and drainage conditions at the field spectra study sites were evaluated using the continuum-removed water absorption bands between 1120 – 1240 nm

(Fig. 5b), general reflectance of the spectra, and field knowledge of the sites. Evaluation of hydrological surface conditions from water absorption bands only is critical, because these spectral segments are also strongly connected with leaf water content (Elvidge 1990, Pu et al. 2003). This challenge is exemplified by class VI, where water-absorption depths are comparably low (Fig. 5b). Only the generally-low reflectance curve indicates the very moist to wet surface conditions typical of thermokarst depressions of the 2<sup>nd</sup> Lena Delta terrace (Fig. 4). In contrast, spectra acquired in a thermokarst basin on the 3<sup>rd</sup> terrace (class II) show strong water absorption (Fig. 5b). The relative surface dryness at this site, caused by the recent (between 1980-2000) complete drainage of the local thermokarst lake, is only recognizable in the high general reflectance of the spectra (Fig. 4). Harris et al. (2005) suggested relationships between NIR water absorption features of *Sphagnum sp.* and hydrological conditions in northern peatlands. In accordance with this result, the spectra of a marshy lake (class VIII) on the 2<sup>nd</sup> terrace vegetated with *Arctophila sp.* and *Sphagnum sp.* show strong water absorption.

In summary, the application of field spectrometry clearly offers the opportunity to identify typical micro- to meso-scale variability of arctic periglacial landscapes occurring in the Lena Delta.

## 5.2. Geomorphological characterization from remote-sensing data

The result of the Landsat ETM+ classification at the Turakh study site in the western Lena Delta consists of 15 land-cover classes, which differ in vegetation cover, drainage situation, and periglacial and geomorphological features (Fig. 6, Fig. 7). The land-cover classification was guided by detailed information collected with a field spectrometer and descriptive field data on land cover (Ulrich & Grosse 2007). For instance, the observed field spectral differences between periglacial structures (e.g. polygonal structure characteristics, thaw depression units) could be used to refine several Landsat land-cover classes (e.g. classes 9, 10, 11). Furthermore, knowledge of the detailed field-spectral properties of the Lena Delta terraces was useful for a finer differentiation of the units in the Landsat classification (e.g. sub-terrace levels, fluvial sand banks, thermo-erosional valleys). Finally, we derived comparable results for the field-spectral classification and the Landsat classification, both indicating the good spectral separation of the periglacial features and terraces in the Lena Delta (Tab. 3). Additionally, CHRIS-Proba pedological mapping was helpful for better discrimination of thermokarst depression surface properties (Fig. 8).

Comparable land-cover classifications for northeast Siberian study sites were applied by Grosse et al. (2006) and Schneider et al. (2009). Schneider et al. (2009) developed a basic land-cover classification of the entire Lena Delta with the goal of quantifying emissions of the greenhouse gas methane from distinct land-cover units. In this study, nine classes were



defined predominantly by their vegetation cover and surface moisture. Geomorphological conditions were given less consideration. The dominating distribution of wet and moist surfaces classes in the Lena Delta already suggested by Schneider et al. (2009) can be confirmed. The authors especially focused on the land-cover class '*wet-sedge and moss dominated tundra*', as these areas are a major source of methane in the delta. At our Turakh study site this class occurs predominantly within the thermokarst depressions on the 2<sup>nd</sup> terrace as well as on the Holocene alluvial plains of the 1<sup>st</sup> terrace. With our local classification, a further differentiation of their general class (wet-sedge and moss-dominated tundra) was possible with classes 11, 10, 9, and 5 representing moist, very moist with polygons, very moist without polygons, and partly marshy areas, respectively (Fig. 6). These four classes differ mainly in the type and character of polygonal structures and drainage conditions, both important parameters for accurately quantifying methane emissions (Wagner et al. 2003).

The Turakh study site (Fig. 3, Fig. 6) shows differences in distribution of thermokarst depressions for each delta terrace. Large thermokarst depressions several km in diameter cover about 53% of the 2<sup>nd</sup> terrace (Fig. 3b). The 3<sup>rd</sup> terrace with its ice-rich Ice Complex deposits shows only limited thermokarst in the studied image subset. This stands in contrast to many other Ice Complex regions in the North Siberian lowlands with often more than 50% of the area impacted by thermokarst (Grosse et al. 2005, 2006).

A possible cause could be the better drainage of the Ice Complex erosional remnants of the 3<sup>rd</sup> terrace in the delta, especially in the study area subset. The 3<sup>rd</sup> terrace unit is surrounded by delta channels and heavily incised by thermo-erosional valleys draining the uplands and hampering the formation of extended thermokarst lakes and basins (Fig. 3b). The general picture of thermokarst lake distribution in the study area agrees with data on overall lake distribution in the entire Lena Delta (Morgenstern et al. 2008). Peat soils investigated within the depressions on the 2<sup>nd</sup> terrace (Fig. 8) are linked to surface stabilization that followed Holocene thermokarst disturbance and provided the conditions for stable peat growth (Grigoriev 1993, Galabala 1987). The thermokarst depressions in the Turakh study site are predominantly covered by land-cover classes 10 and 11 represented by moist and very moist surface conditions, contrary to the adjacent uplands of the 2<sup>nd</sup> terrace which are covered predominantly by classes 12 and 13 (Fig. 6, Fig. 7). The presence of hydromorphic soils, polygonal tundra, and sedge and moss vegetation in these depressions indicate high methane emission potential (Pfeiffer et al. 2002, Wagner et al. 2003). However, actual methane emission is affected by numerous factors, e.g. soil temperature, water level, vegetation cover, pH-value, active layer depth, soil organic carbon content, and the composition of the soil microbial communities (e.g. Wagner et al. 2003, Sachs et al. 2008).

General classification uncertainties are caused by possible surface class misclassifications caused by mixed pixels consisting of at least two different land-cover classes. Such pixels, characterized by mixed spectral signatures, are likely to be classified to a wrong land-cover class (Richards & Jia 1999). Another uncertainty is caused by the limited availability of field data for this large, remote study area, which may result in the inadequate description of classes or the unrecognised presence of other land-cover types. Such misclassification probably occurs to some extent in class 8 (Upper floodplain) and class 6 (Lower floodplain and wet valley floors of the 3<sup>rd</sup> terrace). Although difficult because of the probably-similar plant communities in these classes, a more detailed assessment of the floodplain characteristics along the river channels and in the thermokarst basins might result in enhanced class differentiation, and possibly also a better separation of these wetland cover classes between the Lena Delta terraces.

Class 15 (well-drained slopes of the 3<sup>rd</sup> terrace [Ice Complex]) is characterized by a high reflectance which was interpreted and verified in the field as relatively well-drained, dry slopes with south-facing exposure and accordingly different vegetation communities and vitality. However, the high reflectance of these steep slopes could partially be a result of their exposed position, and thus the sensor viewing and illumination geometry. Another factor is the strong variation of geomorphological and hydrological conditions of the polygonal micro-relief that is not recognizable at the 30 m Landsat resolution. Simultaneous acquisitions of multi- or hyperspectral remote-sensing data and field spectral measurements will be needed to directly compare and upscale field spectra. Good classification accuracy is expected for classes 12, 13, and 14, all represented by drier surfaces. Adequate accuracy is indicated by good accordance of the classified land-cover distribution with the expected spatial distribution of these classes on the Lena Delta terraces from field knowledge. Comparison of the Landsat ETM+ land-cover classes with soil mapping field descriptions from more intensively-studied sites (Fig. 8) and field spectra acquisitions (Fig. 4) indicate a good initial accuracy for the classified land cover. A full quantitative accuracy assessment of the land-cover classification (e.g. Congalton 1991) was not achieved because site replication was lacking due to difficult field logistics in this remote Arctic region.

## **6. Conclusions**

Field spectrometry allowed a spectral differentiation of integrated landscape-scale characteristics typically emerging in vegetation, water, and soils of periglacial lowlands. Differences of individual landscape units in the delta are predominantly caused by vegetation composition, vegetation vitality, and soil and surface moisture in various micro- to meso-scale landscape units like ice wedge polygonal nets, thermokarst depressions, slopes, thermo-erosional valleys, or well-drained uplands. Distinctive surface properties can be

characterized by and related to the shape of the spectral curve, i.e. general reflectance, red edge around 690 – 740 nm, reflectance minima and maxima, and significant absorption features like that for chlorophyll at 680 nm and for water at 1140 – 1220 nm. Besides visual grouping, the continuum-removal technique was successfully applied to differentiate between individual spectral signatures.

The point acquisition of field spectral properties in high spectral and spatial resolution from periglacial features allows the interpretation of coarser resolution satellite data to be validated. The analysis of field spectral data in combination with geomorphological, pedological, and vegetation data guided the characterization and classification of periglacial surfaces and land-cover units in the Lena Delta. The field dataset provides the basis for further spectral investigations (field spectrometry, multi- and hyperspectral satellite data) in the Arctic tundra. The characterization of periglacial surface types derived from both field spectra and Landsat 7 satellite data by analysing the spectral composition and spatial distribution of the individual classes indicates significant differences in surface properties between the three main delta terraces, and thus a good spectral separation of these units. This implies that larger-scale mapping of Arctic deltaic units is possible with these techniques.

Further investigations should consider seasonal and long-term variations in spectral signatures, providing a basis for detecting and evaluating environmental changes in the periglacial landscapes of a warming Arctic. This local study will help in the efforts to calculate a delta-wide methane emission balance using remote sensing and modeling (Landsat-7: Schneider et al 2009; MERIS: Kirschke et al. 2008). Finally, the achieved spectral dataset will serve as a starting point for ongoing and future land-cover and change-detection studies with various multi- and hyperspectral sensors in this climate-sensitive Arctic wetland.

## **Acknowledgements**

Field-work was carried out within the framework of the Russian-German expedition Lena 2005. We thank all colleagues involved in the logistical and scientific support. We would like to thank Birgit Heim for fruitful discussions on field spectrometry and multi- and hyperspectral remote-sensing applications. The continuing effort and support of the European Space Agency (ESA) and SIRA electro-optics Ltd. (UK) to provide the CHRIS-Proba data is gratefully acknowledged. We appreciate the detailed and valuable comments of three anonymous reviewers that improved this article.

## **References**

- AG Boden (1994). *Bodenkundliche Kartieranleitung*. 4<sup>th</sup> ed. (pp.392). Stuttgart: E. Schweizerbart'sche Verlagsbuchgesellschaft. (in German).

- ACIA (2005). *Arctic Climate Impact Assessment*. Cambridge University Press. 1042p.
- Andreev, A., Tarasov, P., Schwamborn, G., Ilyashuk, B., Ilyashuk, E., Bobrov, A., Klimanov, V., Rachold, V. & Hubberten, H.W. (2004). Holocene paleoenvironmental records from Nikolay Lake, Lena River Delta, Arctic Russia. *Palaeogeography, Palaeoclimatology, Palaeoecology*, 209, 197 – 217.
- Are, F., & Reimnitz, E. (2000). An overview of the Lena River Delta setting: Geology, Tectonics, Geomorphology and Hydrology. *Journal of Coastal Research*, 16, 1083 – 1093.
- Boike, J., & Yoshikawa, K. (2003). Mapping of periglacial geomorphology using kite/ballon aerial photography. *Permafrost and Periglacial Processes*, 14, 81 - 85.
- Boike, J., Wille, C., & Abnizova, A. (2008). Climatology and summer energy and water balance of polygonal tundra in the Lena River Delta, Siberia. *Journal of Geophysical Research*, 113. doi:10.1029/2007JG000540
- Brown, J., Ferrians Jr., O.J., Heginbottom, J.A., & Melnikov, E.S. (1998). Circum-Arctic Map of Permafrost and Ground Ice Conditions. In Parsons, M., & Zhang, T. (Ed.). *“International Permafrost Association Standing Committee on Data Information and Communication. Circumpolar Active-Layer Permafrost System, Version 2.0”*. Bolder, Colorado. National Snow and Ice Data Center/World Data Center for Glaciology. CD-ROM, 2003.
- CAVM Team (2003). Circumpolar Arctic Vegetation Map, Scale 1:7.500.000. Conservation of Arctic Flora and Fauna (CAFF) Map No.1. U.S. Fish and Wildlife Service, Anchorage, Alaska. <http://www.geobotany.uaf.edu/cavm/finalcavm/index.html>.
- Ceccato, P., Flasse, S., Tarantola, S., Jacquemoud, S., & Gregoire, J.M. (2001). Detecting vegetation leaf water content using reflectance in the optical domain. *Remote Sensing of Environment*, 77, 22 – 33.
- Chabrillat, S., Goetz, A.F.H., Olsen, H.W., & Krosley L. (2002). Use of hyperspectral images in the identification and mapping of expansive clay soils and the role of spatial resolution. *Remote Sensing of Environment*, 82 (2-3), 431-445.
- Chavez, P.S. (1996). Image-based atmospheric corrections – revised and improved. *Photogrammetric Engineering & Remote Sensing*, 62 (9), 1025 – 1036.
- Clark, R.N., & Roush, T.L. (1984). Reflectance spectroscopy: quantitative analysis techniques for remote sensing applications. *Journal of Geophysical Research*, 89, 6329 – 6340.
- Clark, R.N. (1999). Spectroscopy of rocks and minerals, and principles of spectroscopy. In Rencz, A.N. (Ed.), *Remote sensing for the earth science - Manual of Remote Sensing* (pp.3 – 58). 3<sup>rd</sup> ed. New York, Chichester, Weinheim, Brisbane, Singapore, Toronto: John Wiley & Sons.

- Clevers, J.G.P.W., Kooistra, L. & Schalepman, M.E. (2008). Using spectral information from the NIR water absorption features for the retrieval of canopy water content. *International Journal of Applied Earth Observation and Geoinformation*, 10 (3), 388 – 397.
- Congalton, R.G. (1991). A review of assessing the accuracy of classifications of remotely sensed data. *Remote Sensing of Environment*, 37, 35 – 46.
- Curtiss, B., & Goetz, A.F.H. (1994). Field spectrometry: Techniques and instrumentation. *International Symposium on Spectral Sensing Research*, July 1994. 31 – 40.
- Curran, P.J., Dungan, J.L., & Gholz, H.L. (1990). Exploring the relationship between reflectance red edge and chlorophyll content in slash pine. *Tree Physiology*, 7, 33 – 48.
- Elvidge, C.D. (1990). Visible and near infrared reflectance characteristics of dry plant materials. *International Journal Remote Sensing*, 11, 1775 – 1795.
- Etzelmüller, B., Ødegård, R.S., Berthling, I., & Sollid, J.L. (2001). Terrain parameters and remote sensing data in the analysis of permafrost distribution and periglacial processes: Principles and examples from Southern Norway. *Permafrost and Periglacial Processes*, 12, 79 - 92.
- Everdingen, R.O.v. (Ed.) (2005). Multi-Language Glossary of Permafrost and Related Ground-Ice Terms. International Permafrost Association, Calgary. <http://nsidc.org/fgdc/glossary>.
- Frohn, R.C., Hinkel, K.M., & Eisner, W.R. (2005). Satellite remote sensing classification of thaw lakes and drained thaw lake basins on the North Slope of Alaska. *Remote Sensing of the Environment*, 97, 116-126.
- Galabala, R.O. (1987). New data on the Lena-Delta structure. *Quaternary of North-East USSR, Magadan*. 152 – 172. (in Russian).
- Goryachkin, S.V., Karavaeva, N.A., Targulian, V.O., & Glazow, M.V. (1999). Arctic Soils: Spatial distribution, zonality and transformation due to global change. *Permafrost and Periglacial Processes*, 10, 235 – 250.
- Grigoriev, M.N. (1993). *Cryomorphogenesis in the Lena Delta*. (pp.173). Yakutsk. (in Russian).
- Grigoriev, M.N., Imaev, V.S., Imaeva, L.P., Kozmin, B.M., Kunitzkiy, V.V., Lationov, A.G., Mikulenko, K.I., Skryabin, R.M., & Timirshin, K.V. (1996). *Geology, seismicity and cryogenic processes in the arctic areas of Western Yakutia*. (pp. 84). Yakut Scientific Centre SD RAS, Yakutsk. (in Russian).
- Grosse, G., Schirrmeister, L., Kunitzky, V.V., & Hubberten, H.W. (2005). The use of CORONA images in remote sensing of periglacial geomorphology: An illustration from the NE Siberian coast. *Permafrost and Periglacial Processes*, 16, 163 - 172.

- Grosse, G., Schirrmeister, L., & Malthus, T.J. (2006). Application of Landsat-7 satellite data and a DEM for the quantification of thermokarst-effected terrain types in the periglacial Lena-Anabar coastal lowland. *Polar Research*, 25, 51 - 67.
- Harris, A., Bryant, R.G., & Baird, A.J. (2005). Detecting near-surface moisture stress in *Sphagnum spp.* *Remote Sensing of Environment*, 97, 371 – 381.
- Hinkler, J., Ørbæk, J.B., & Hansen, B.U. (2003). Detection of spatial, temporal, and spectral surface changes in the Ny-Ålesund area 79° N, Svalbard, using a low cost multispectral camera in combination with spectroradiometer measurements. *Physics and Chemistry of the Earth*, 28, 1229 – 1239.
- Hope, A.S., Fleming, J.B., Stow, D.A., & Aguado, E. (1991). Tussocks tundra albedos on the north slope of Alaska: Effects of illumination, vegetation composition and dust deposition. *Journal of Applied Meteorology*, 30, 1200 – 1206.
- Hope, A.S., Kimball, J.S., & Stow, D.A. (1993). The relationship between tussock tundra spectral reflectance properties and biomass and vegetation composition. *International Journal Remote Sensing*, 14, 1861 – 1874.
- Horler, D.N.H., Dockray, M., & Barber, J. (1983). The red edge of plant leaf reflectance. *International Journal Remote Sensing*, 4, 273 – 288.
- Jago, R.A., Cutler, M.E.J., & Curran, P.J. (1999). Estimating canopy chlorophyll concentration from field and airborne spectra. *Remote Sensing of Environment*, 68, 217 – 224.
- Kade, A., Romanovsky, V.E. & Walker, D.A. (2006). The N-Factor of nonsorted circles along a climate gradient in Arctic Alaska. *Permafrost and Periglacial Processes*, 17, 279 – 289.
- Kirschke, S., Guenther, K.P., Wisskirchen, K., Sachs, T., & Dech, S. (2008). Methane Emission from Siberian Wet Polygonal Tundra on Multiple Spatial Scales: Process-based Modelling of Methane Fluxes on the Regional Scale, Lena Delta. *Proceedings of the Ninth International Conference on Permafrost (NICOP)*, June 29 - July 3, 2008, Fairbanks, Alaska, USA.
- Lantuit, H., Grigoriev, M.N., Grosse, G. & Ulrich, M. (2007). Studies of oriented lakes and thermokarst depressions. In Schirrmeister, L., Wagner, D., Grigoriev M.N. & Bolshiyarov, D.Yu. (Ed.). Russian-German Cooperation SYSTEM LAPTEV SEA - The Expedition Lena- 2005. *Reports on Polar and Marine Research*, 550, 87 – 99, hdl:10013/epic.26642.d001.
- Milton, E.J. (1987). Principles of field spectroscopy - Review article. *International Journal Remote Sensing*, 8, 1807 – 1827.

- Milton, E.J., Rollin, E.M., & Emery, D.R. (1995). Advances in field spectroscopy. In Danson, F.M. & Plummer, S.E. (Ed.). *Advances in environmental remote sensing*. (pp.9 – 32). Chichester, New York, Brisbane, Toronto, Singapore: John Wiley & Sons.
- Morgenstern, A., Grosse, G., & Schirmer, L. (2008). Genetic, Morphological, and Statistical Characterization of Lakes in the Permafrost-dominated Lena Delta. *Proceedings of the Ninth International Conference on Permafrost (NICOP)*, June 29 - July 3, 2008, Fairbanks, Alaska, USA.
- Nelson, F. E., Anisimov, O. A., & Shiklomanov, N. I. (2002). Climate change and hazard zonation in the circum-Arctic permafrost regions. *Natural Hazards*, 26, 203 - 225.
- Okin, G.S., Roberts, D.A. Murray, B., & Okin, W.J. (2001). Practical limits on hyperspectral vegetation discrimination in arid and semiarid environments. *Remote Sensing of Environment*, 77, 212 – 225.
- Olthof, I., & Fraser, R.H. (2007). Mapping northern land cover fractions using Landsat ETM+. *Remote Sensing of Environment*, 107, 496 - 509.
- Peddle, D.R., & Franklin, S.E. (1993). Classification of permafrost active layer depth from remotely sensed and topographic evidence. *Remote Sensing of Environment*, 44, 67 – 80.
- Petzold, D.E., & Rencz, A.N. (1975). The Albedo of selected subarctic surfaces. *Arctic and Alpine Research*, 7, 393 – 398.
- Pfeiffer, E.-M., Wagner, D., Kobale, S., Kutzbach, L., Kurchatova, A., Stoof, G., & Wille, C. (2002). Modern processes in permafrost affected soils. In Pfeiffer, E.-M. & Grigoriev, M.N. (Ed.). *Russian-German Cooperation SYSTEM LAPTEV SEA 2000 - The Expedition LENA 2001*. (pp. 21 – 41).
- Pinar, A., & Curran, P.J. (1996). Grass chlorophyll and the reflectance red edge, Technical note. *International Journal Remote Sensing*, 17(2), 351 – 357.
- Pinker, R.T., & Karnieli, A. (1995). Characteristic spectral reflectance of semi-arid environment. *International Journal of Remote Sensing*, 16(7), 1341 – 1363.
- Pu, R., Ge, S., Kelly, N.M., & Gong, P. (2003). Spectral absorption features as indicators of water status in coast live oak (*Quercus agrifolia*) leaves. *International Journal Remote Sensing*, 24, 1799 – 1810.
- Rees, W.G., Williams, M., & Vitebsky, P. (2003). Mapping land cover change in a reindeer herding area of the Russian Arctic using Landsat TM and ETM+ imagery and indigenous knowledge. *Remote Sensing of Environment*, 85, 441 - 452.
- Rees, W.G., Tutubalina, O.V., & Golubeva, E.I. (2004). Reflectance spectra of subarctic lichens between 400 and 2400 nm. *Remote Sensing of Environment*, 90, 281- 292.
- Richards, J.A., & Jia, X. (1999). *Remote sensing digital image analysis - An introduction*. 3<sup>rd</sup> ed. (pp. 363). Berlin, Heidelberg, New York: Springer.

- Riedel, S.M., Epstein, H.E., & Walker, D.A. (2005). Biotic controls over spectral reflectance of arctic tundra vegetation. *International Journal of Remote Sensing*, 26, 2391-2405
- Rock, B.N., Hoshizaki, T., & Miller, J.R. (1988). Comparison of *In Situ* and airborne spectral measurements of the Blue Shift associated with forest decline. *Remote Sensing of Environment*, 24, 109 – 127.
- Sachs, T., Wille, C., Boike, J., & Kutzbach, L. (2008). Environmental controls on ecosystem-scale CH<sub>4</sub> emission from polygonal tundra in the Lena River Delta, Siberia, *Journal of Geophysical Research*, 113, G00A03. doi:10.1029/2007JG000505
- Sazonova, T.S., Romanovsky, V.E., Walsh, J.E., & Sergueev, D.O. (2004). Permafrost dynamics in 20th and 21st centuries along the East-Siberian Transect, *Journal of Geophysical Research*, 109, D01108. doi:10.1029/2003JD003680, 2004
- Schirrmeister, L., Kunitsky, V.V., Grosse, G., Schwamborn, G., Andreev, A.A., Meyer, H., Kuznetsova, T., Bobrov, A., & Oezen, D. (2003). Late Quaternary history of the accumulation plain north of the Chekanovsky Ridge (Lena Delta, Russia): A multidisciplinary approach. *Polar Geography*, 27, 277 – 319.
- Schmidt, K.S., & Skidmore, A.K. (2003). Spectral discrimination of vegetation types in a coastal wetland. *Remote Sensing of Environment*, 85, 92 – 108.
- Schneider, J., Grosse, G., & Wagner, D. (2009). Land cover classification of tundra environments in the Arctic Lena Delta based on Landsat 7 ETM+ data and its application for upscaling of methane emission. *Remote Sensing of Environment*, 113, 380 – 391.
- Schwamborn, G., Andreev, A.A., Rachold, V., Hubberten, H.-W., Grigoriev, M.N., Tumskey, V., Pavlova, E.Yu., & Dorozhkina, M.V. (2000). Evolution of Lake Nikolay, Arga Island, Western Lena River Delta, during Late Pleistocene and Holocene time. *Polarforschung*, 70, 69 – 82.
- Schwamborn, G., Rachold, V., & Grigoriev, M.N. (2002). Late Quaternary sedimentation history of the Lena Delta. *Quaternary International*, 89, 119 – 134.
- Seelig, H.-D., Hoehn, A., Stodieck, L.S., Klaus, D.M., Adams III, W.W. & Emery, W.J. (2008). The assessment of leaf water content using leaf reflectance ratios in the visible, near-, and short-wave-infrared. *International Journal of Remote Sensing*, 29 (13), 3701 – 3713.
- Soil Survey Staff (2003). *Keys to Soil Taxonomy*. 9<sup>th</sup> ed. (pp. 332). United States Department of Agriculture, Natural Resources Conservation Service.
- Stow, D.A., Burns, B.H., & Hope, A.S. (1993). Spectral, spatial and temporal characteristics of Arctic tundra reflectance. *International Journal Remote Sensing*, 14, 2445 – 2462.
- Stow, D.A., Hope, A., McGuire, D., Verbyla, D., Gamon, J., Huemmrich, F., Houston, S., Racine, C., Sturm, M., Tape, K., Hinzman, L., Yoshikawa, K., Tweedie, C., Noyle, B.,



- Silapaswan, C., Douglas, D., Griffith, B., Jia, G., Epstein, H., Walker, D., Daeschner, S., Petersen, A., Zhou, L., & Myneni, R. (2004). Remote sensing of vegetation and land-cover in arctic tundra ecosystems. *Remote Sensing of Environment*, 89, 281 – 308.
- Tou, J.T., & Gonzalez, R.C. (1974). *Pattern Recognition Principles*. Addison-Wesley Publishing Company, Reading, Massachusetts.
- Ulrich, M., & Grosse, G. (2007). Characteristics and spectral properties of periglacial landforms. In Schirrmeyer, L., Wagner, D., Grigoriev M.N. & Bolshiyakov, D.Yu. (Ed.). Russian-German Cooperation SYSTEM LAPTEV SEA - The Expedition Lena-2005. *Reports on Polar and Marine Research*, 550, 100 – 103, Appendix 4-1, 4-3, hdl:10013/epic.26642.d001.
- van Til, M., Bijmer, A., & de Lange, R. (2004). Seasonal variability in spectral reflectance of coastal dune vegetation. *EARSel eProceedings*, 3, 154 – 165.
- van der Meer, F. (2004). Analysis of spectral absorption features in hyperspectral imagery. *International Journal of Applied Earth Observation and Geoinformation*, 5, 55 – 68.
- Vierling, L.A., Deering, D.W., & Eck, T.F. (1997). Differences in arctic tundra vegetation type and phenology as seen using bidirectional radiometry in the early growing season. *Remote Sensing of Environment*, 60, 71 – 82.
- Wagner, D., Kobabe, S., Pfeiffer, E.M., & Hubberten, H.W. (2003). Microbial controls on methane fluxes from polygonal tundra of the Lena Delta, Siberia. *Permafrost and Periglacial Processes*, 14, 173 – 185.
- Wagner, D., Gattinger, A., Embacher, A., Pfeiffer, E.-M., Schloter, M., & Lipski, A. (2007). Methanogenic activity and biomass in Holocene permafrost deposits of the Lena Delta, Siberian Arctic and its implication for the global methane budget. *Global Change Biology*, 13, 1089–1099. doi: 10.1111/j.1365-2486.2007.01331.x
- Walter, K.M., Zimov, S.A., Chanton, J.P., Verbyla, D., & Chapin III, F.S.. (2006). Methane Bubbling from Siberian Thaw Lakes as a Positive Feedback to Climate Warming. *Nature*, 443, 71-75.
- Walter, K.M., Edwards, M.E., Grosse, G., Zimov, S.A., and Chapin III, F.S. (2007). Thermokarst Lakes as a Source of Atmospheric CH<sub>4</sub> During the Last Deglaciation. *Science*, 318, 633-636.
- Weidong, L., Baret, F., Xingfa, G., Qingxi, T., Lanfen, Z. & Bing, Z. (2002). Relating soil moisture to reflectance. *Remote Sensing of Environment*, 81, 238 – 246.
- Wetterich, S., Kuzmina, S., Andreev, A.A., Kienast, F., Meyer, H., Schirrmeyer, L., Kuznetsova, T., & Sierralta, M. (2008). Palaeoenvironmental dynamics inferred from late Quaternary permafrost deposits on Kurungnakh Island (Lena Delta, Northeast Siberia, Russia), *Quaternary Science Reviews* 27, 1523–1540.

- WWIS (2006). World Weather Information Service. <http://www.worldweather.org/107/c01040.html>.
- Zhang, T., Barry, R.G., Knowles, K., Heginbottom, J.A., & Brown, J. (1999). Statistics and characteristics of permafrost and ground ice distribution in the Northern Hemisphere. *Polar Geography*, 23, 132 - 154.
- Zhang, T., Roger, G.B., & Armstrong, R.L. (2004). Application of satellite remote sensing techniques to frozen ground studies. *Polar Geography*, 28, 163 - 196.
- Zimov, S.A., Schuur, E.A.G., & Chapin III, F.S. (2006). Permafrost and the global carbon budget. *Science*, 312, 1612 – 1613.