



Originally published as:

Weber, M., Abu-Ayyash, K., Abueladas, A., Agnon, A., Alasonati-Tašárová, Z., Al-Zubi, H., Babeyko, A., Bartov, Y., Bauer, K., Becken, M., Bedrosian, P. A., Ben-Avraham, Z., Bock, G., Bohnhoff, M., Bribach, J., Dulski, P., Ebbing, J., El-Kelani, R., Förster, A., Förster, H.-J., Frieslander, U., Garfunkel, Z., Goetze, H. J., Haak, V., Haberland, C., Hassouneh, M., Helwig, S., Hofstetter, A., Hoffmann-Rothe, A., Jäckel, K. H., Janssen, C., Jaser, D., Kesten, D., Khatib, M., Kind, R., Koch, O., Koulakov, I., Laske, G., Maercklin, N., Masarweh, R., Masri, A., Matar, A., Mechie, J., Meqbel, N., Plessen, B., Möller, P., Mohsen, A., Oberhänsli, R., Oreshin, S., Petrunin, A., Qabbani, I., Rabba, I., Ritter, O., Romer, R. L., Rümpker, G., Rybakov, M., Ryberg, T., Saul, J., Scherbaum, F., Schmidt, S., Schulze, A., Sobolev, S. V., Stiller, M., Stromeyer, D., Tarawneh, K., Trela, C., Weckmann, U., Wetzell, U., Wylegalla, K. (2010): Correction to 'Anatomy of the Dead Sea Transform from lithospheric to microscopic scale'. - Reviews of Geophysics, 48, RG1003

DOI: 10.1029/2010RG000325



CORRECTION TO “ANATOMY OF THE DEAD SEA TRANSFORM FROM LITHOSPHERIC TO MICROSCOPIC SCALE”

M. Weber, K. Abu-Ayyash, A. Abueladas, A. Agnon, Z. Alasonati-Tašárová, H. Al-Zubi, A. Babeyko, Y. Bartov, K. Bauer, M. Becken, P. A. Bedrosian, Z. Ben-Avraham, G. Bock, M. Bohnhoff, J. Bribach, P. Dulski, J. Ebbing, R. El-Kelani, A. Förster, H.-J. Förster, U. Frieslander, Z. Garfunkel, H. J. Goetze, V. Haak, C. Haberland, M. Hassouneh, S. Helwig, A. Hofstetter, A. Hoffmann-Rothe, K. H. Jäckel, C. Janssen, D. Jaser, D. Kesten, M. Khatib, R. Kind, O. Koch, I. Koulakov, G. Laske, N. Maercklin, R. Masarweh, A. Masri, A. Matar, J. Mechie, N. Meqbel, B. Plessen, P. Möller, A. Mohsen, R. Oberhänsli, S. Oreshin, A. Petrunin, I. Qabbani, I. Rabba, O. Ritter, R. L. Romer, G. Rumpker, M. Rybakov, T. Ryberg, J. Saul, F. Scherbaum, S. Schmidt, A. Schulze, S. V. Sobolev, M. Stiller, D. Stromeyer, K. Tarawneh, C. Trela, U. Weckmann, U. Wetzels, and K. Wylegalla

Received 8 January 2010; published 24 March 2010.

Citation: Weber, M., et al. (2010), Correction to “Anatomy of the Dead Sea Transform from lithospheric to microscopic scale,” *Rev. Geophys.*, 48, RG1003, doi:10.1029/2010RG000325.

[1] In the paper “Anatomy of the Dead Sea Transform from lithospheric to microscopic scale” by M. Weber et al. (*Reviews of Geophysics*, 47, RG2002, doi:10.1029/2008RG000264, 2009), an error occurred in Figure 1. In Figure 1, the pair of

arrows indicating the shear motion along the left-lateral Dead Sea Transform suggests the wrong shear sense. The corrected version (left-lateral) is given here.

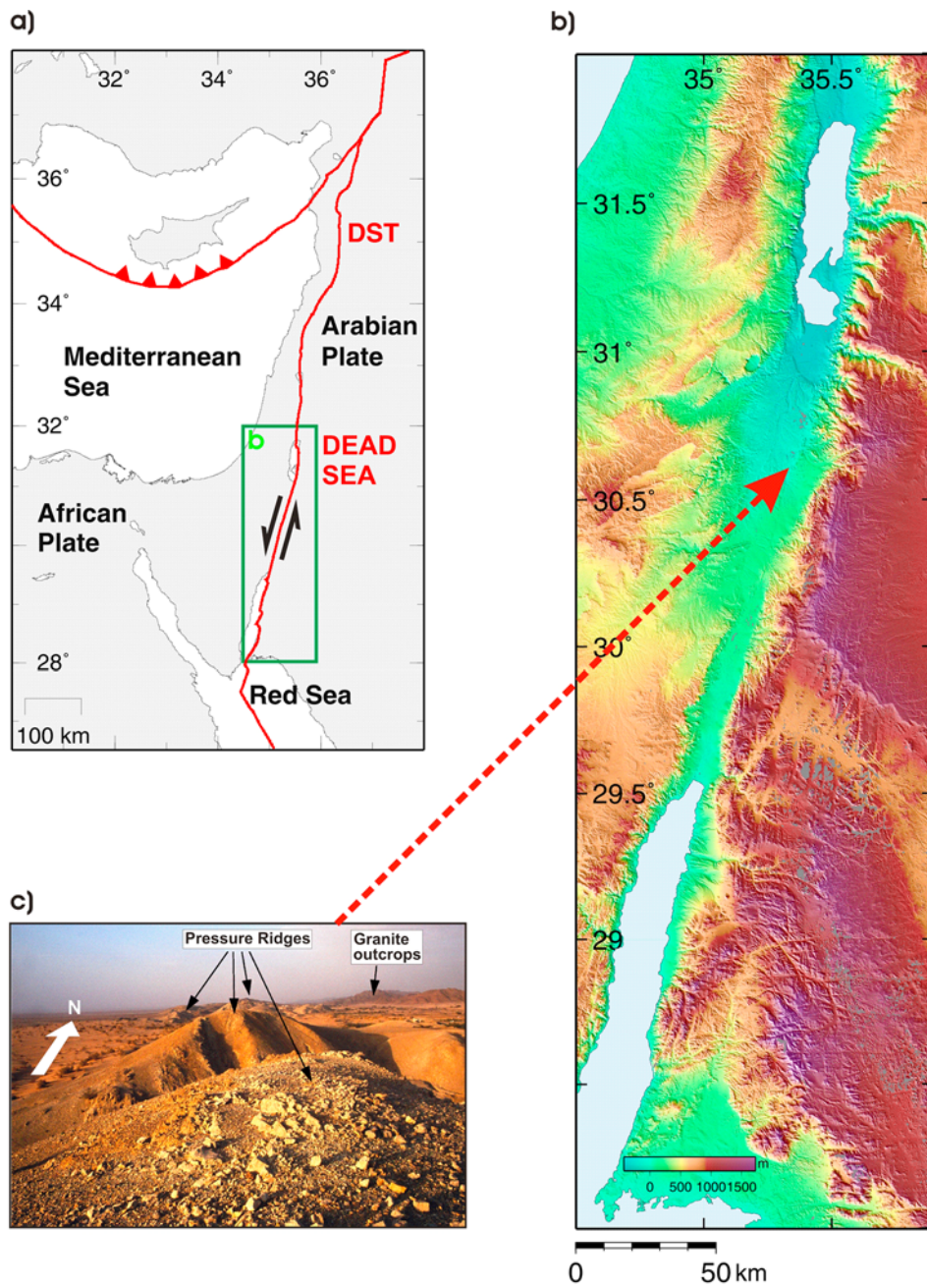


Figure 1. (a) Tectonic setting of the Levant. DST, Dead Sea Transform. (b) Relief map of the region between the Dead Sea and the Red Sea (green box in Figure 1a). (c) Pressure ridges in the Arava/Araba Valley between lines P9 and P10 in Figure 2f and at line 5 in Figure 2g.