

Twitter als schnelle Informationsquelle nach Erdbeben

S. Eggert, Sekt. 2.1, J. Fohringer, Sekt. 1.5
eggert@gfz-potsdam.de



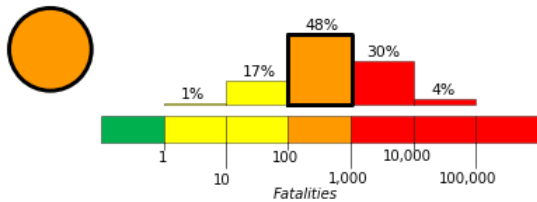
GISday

Einleitung

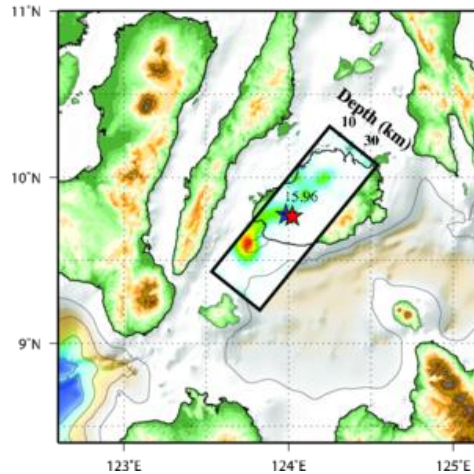
Bohol/ Philippinen, 15.10.2013, Mw 7.1



estimated fatalities

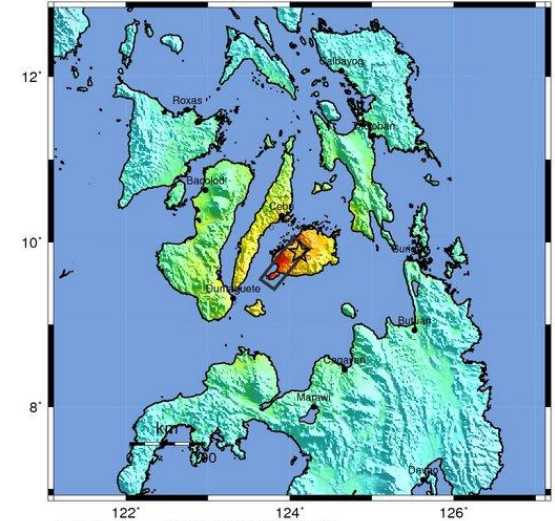


finite fault model



shakemap

USGS ShakeMap : BOHOL, PHILIPPINES
 OCT 15 2013 12:12:32 AM GMT M 7.1 N9.88 E124.12 Depth: 20.6km ID:b000kdb4



Map Version 6 Processed Thu Nov 14, 2013 07:29:56 PM MST

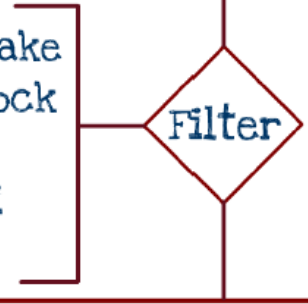
PERCEIVED SHAKING	Not felt	Weak	Light	Moderate	Strong	Very strong	Severe	Violent	Extreme
POTENTIAL DAMAGE	none	none	none	Very light	Light	Moderate	Mod./Heavy	Heavy	Very Heavy
PEAK ACC.(%)	<0.05	0.3	2.8	6.2	12	22	40	75	>139
PEAK VEL.(cm/s)	<0.02	0.1	1.4	4.7	9.6	20	41	86	>178
INSTRUMENTAL INTENSITY	I	II-III	IV	V	VI	VII	VIII	IX	X+

Scale based upon Worden et al. (2011)

Methode



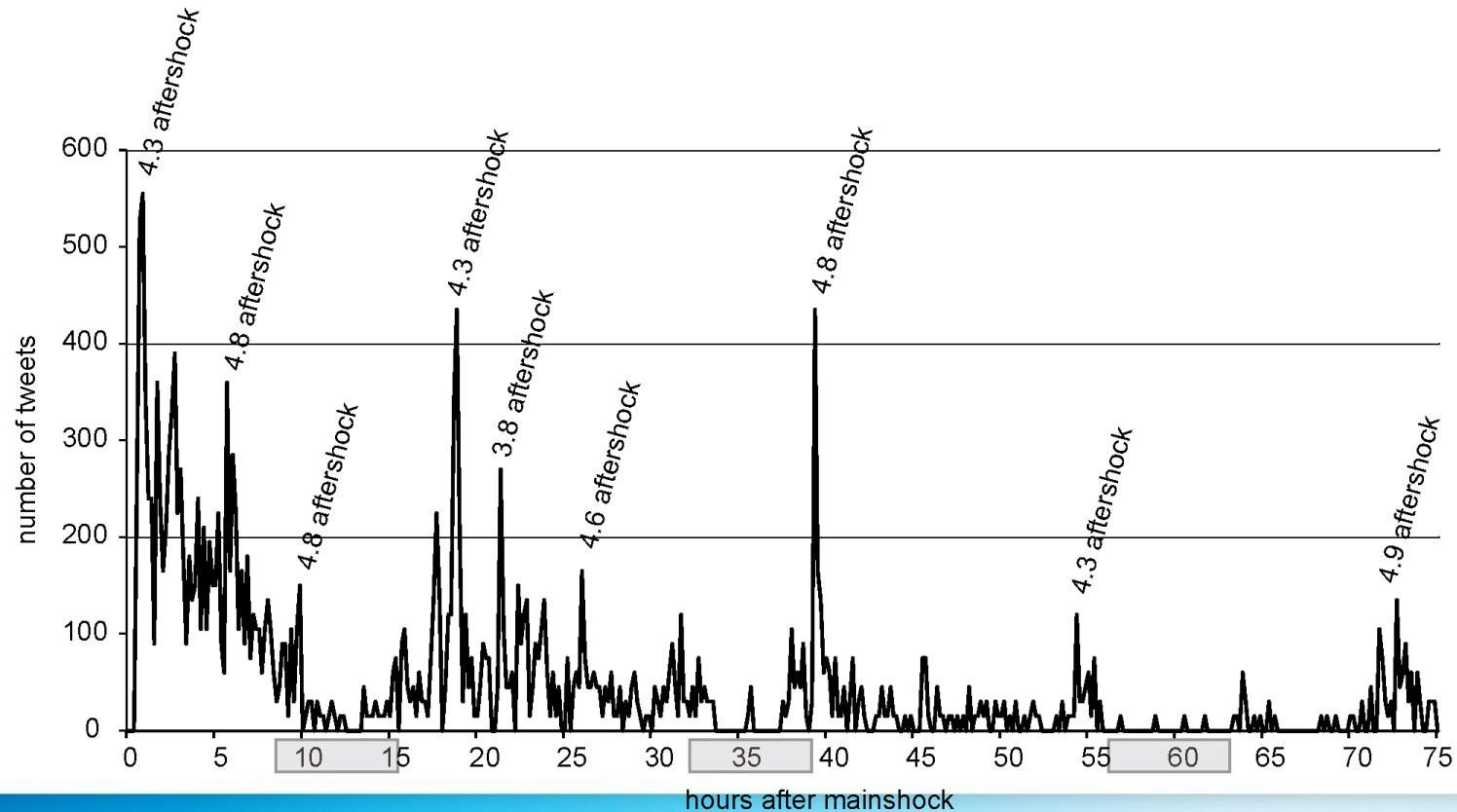
earthquake
aftershock
shaking
tsunami
...



Sender	Datum	Zeit	Ort	Nachricht			
User	Time	Time	Lat	Long	Text	Time ID	Source
sebastiand	06 Sep 2012	14:03:31	10.4811	85.2623	from que 20 #epicentro de	753687643	http://twitter.com/quest/agg...
superciti	06 Sep 2012	14:03:22	10.450	70.030	did you hear that #quake	753687492	http://twitter.com/quest/agg...
maria_chen	06 Sep 2012	14:03:20	10.360	89.480	#shaking really and really!	753687041	http://twitter.com/quest/agg...
arec	06 Sep 2012	14:03:31	10.471	86.511	mean here had no warning	753687010	http://twitter.com/quest/agg...
RichardRub	06 Sep 2012	14:03:30	10.212	85.149	no ambo el 3.1 en #rptar...	753686296	http://www.twevids.com/84...
highfiveDad	06 Sep 2012	14:03:44	10.166	85.220	maloson veeerde en caso f...	753686959	http://www.twevids.com/ve...
Rocheidad	06 Sep 2012	14:03:45	10.250	75.145	#quake #shaking #rptar g...	753686495	http://twitter.com/quest/agg...
Danny1	06 Sep 2012	14:03:55	10.305	78.265	#shaking #yesterday	753687120	http://twitter.com/quest/agg...
RichardRub	06 Sep 2012	14:03:57	10.260	85.030	corrocion... 3 6 #shaking	753686381	http://www.twevids.com/ve...
DR123	06 Sep 2012	14:04:00	10.419	114.84	any but not any time?	753686373	http://twitter.com/quest/agg...
terro	06 Sep 2012	14:04:02	10.081	85.284	immi Thought I had someth...	753686563	http://twitter.com/quest/agg...
gigamonster	06 Sep 2012	14:04:15	10.005	85.280	IT was detected #tremor de G...	753687235	http://www.twevids.com/ve...
negro	06 Sep 2012	14:04:51	10.070	85.281	Puente Alto cerrado despu...	753720419	http://twitter.com/quest/agg...
baubo	06 Sep 2012	14:04:52	10.059	85.168	Si te encuentras en la calle...	753672104	http://twitter.com/quest/agg...

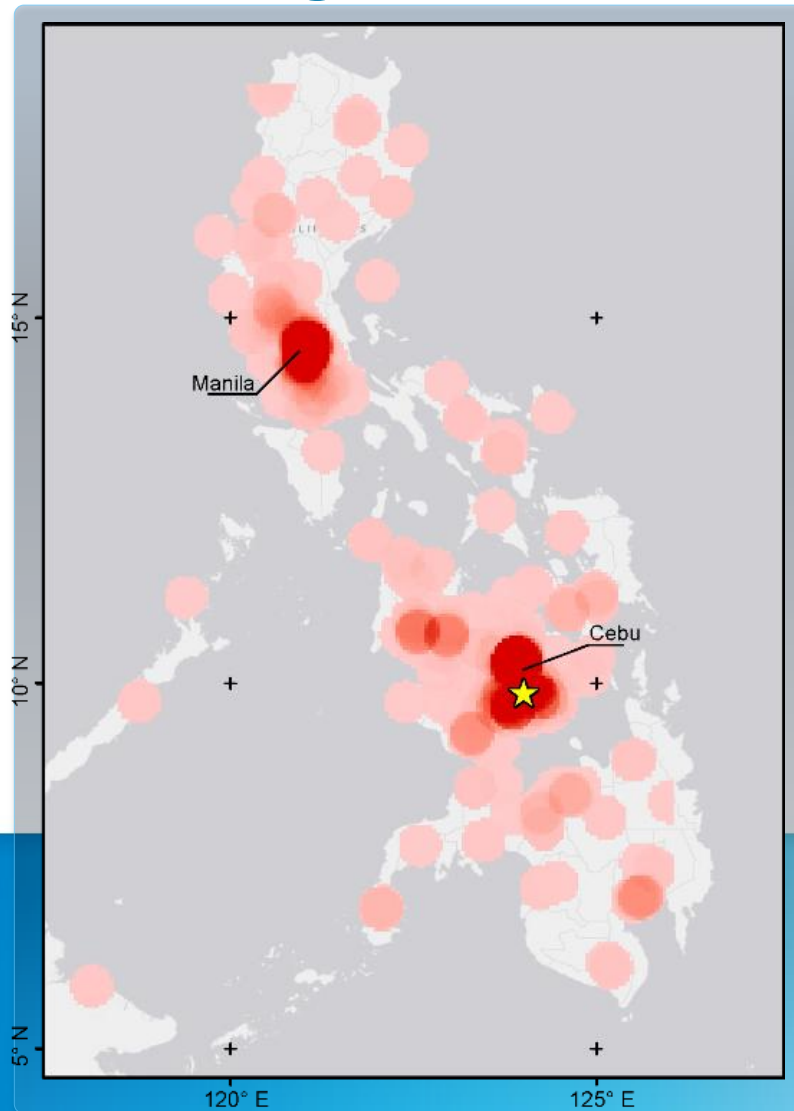
Beispiel: Bohol/ Philippinen, 15.10.2013, Mw 7.1

Wann wird getwittert?

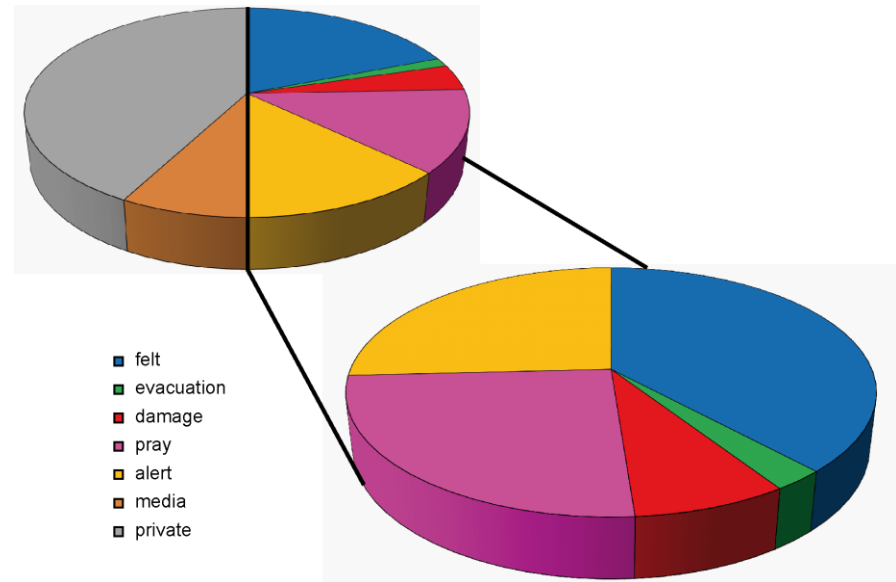


Beispiel: Bohol/ Philippinen, 15.10.2013, Mw 7.1

Wo wird getwittert?

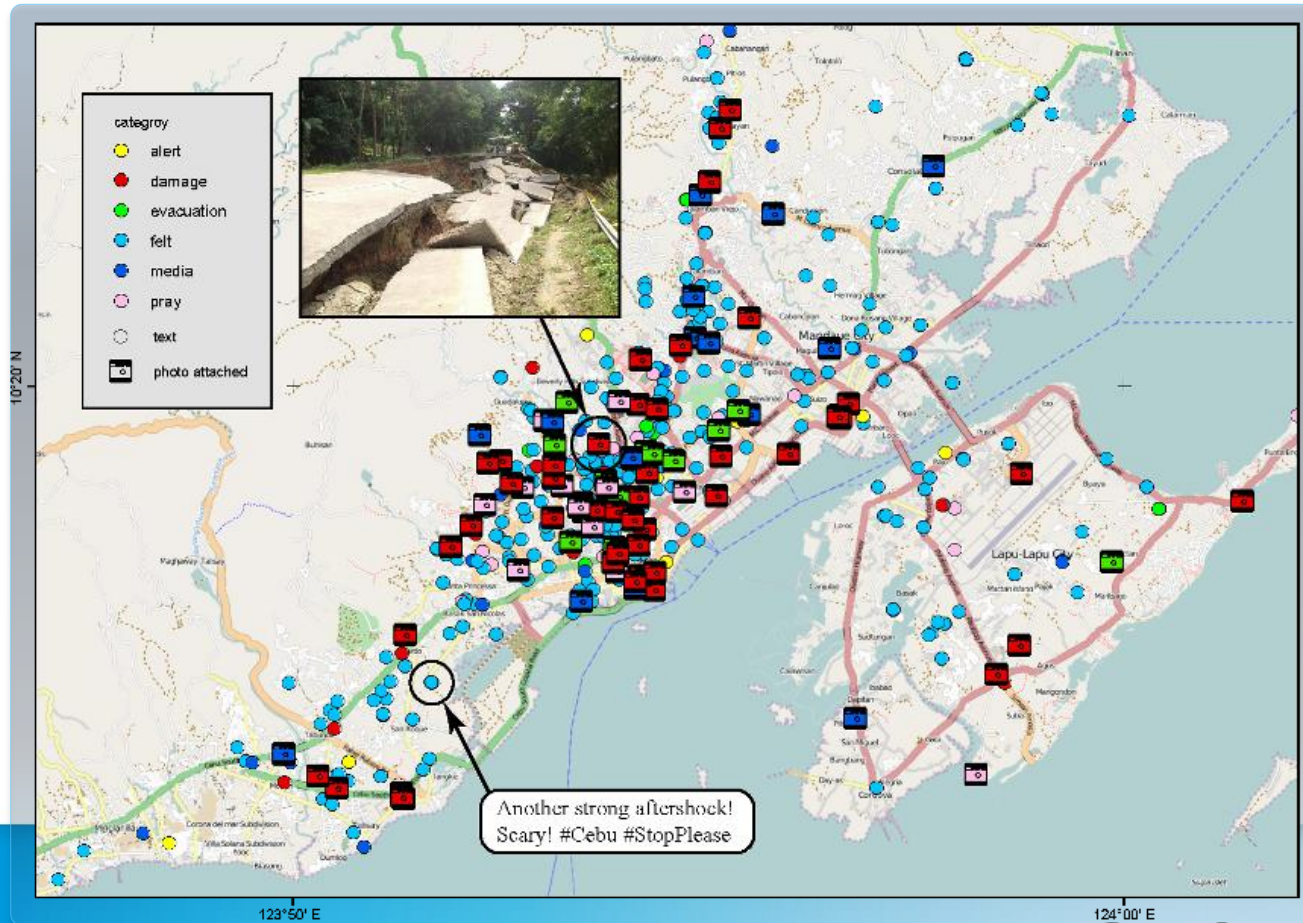


Was wird getwittert?



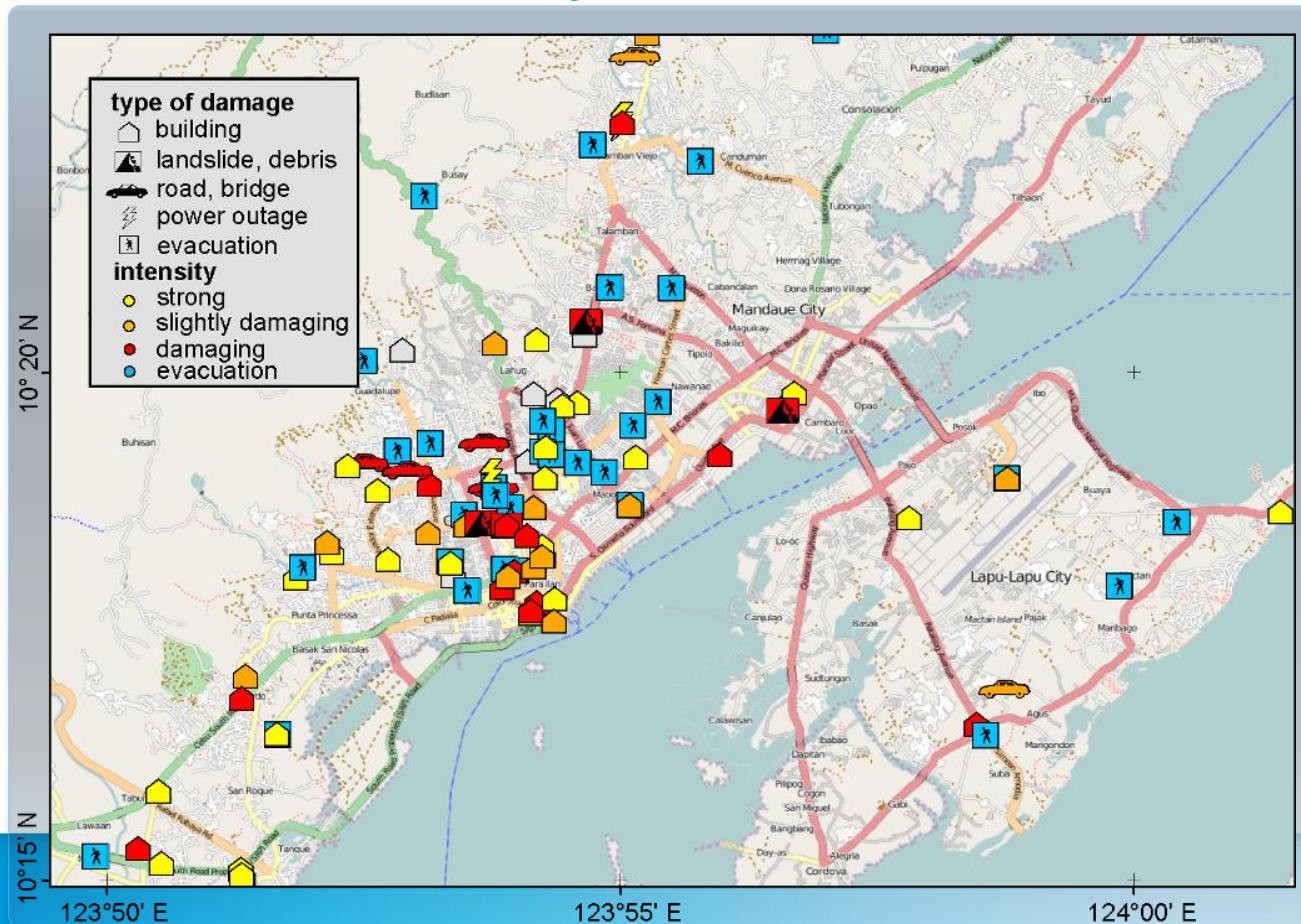
Beispiel: Bohol/ Philippinen, 15.10.2013, Mw 7.1

Nahaufnahme Cebu City



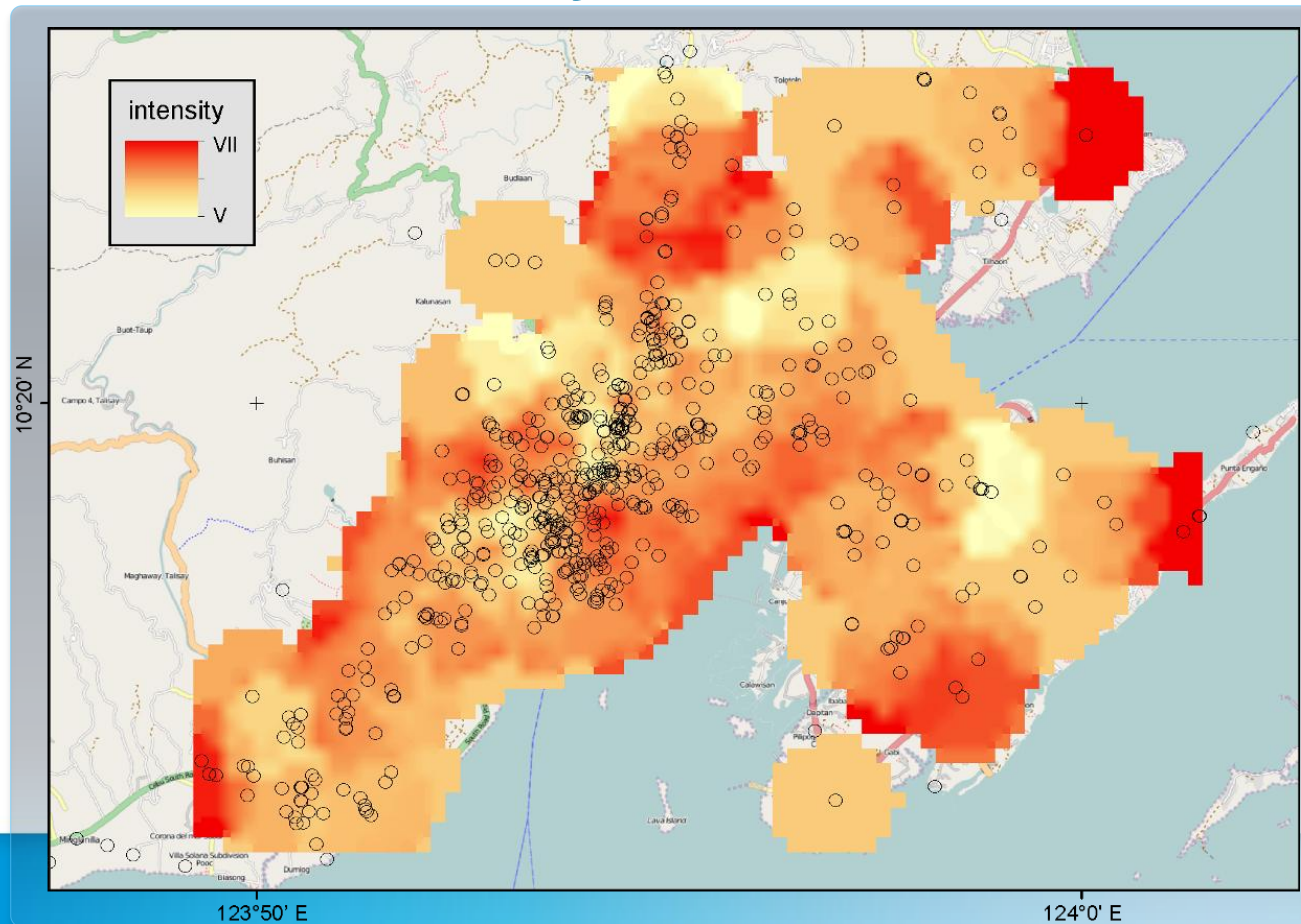
Beispiel: Bohol/ Philippinen, 15.10.2013, Mw 7.1

Nahaufnahme Cebu City



Beispiel: Bohol/ Philippinen, 15.10.2013, Mw 7.1

Nahaufnahme Cebu City



SWOT : strengths – weaknesses – opportunities - threats

Chancen	Hindernisse
<p>Stärken</p> <ul style="list-style-type: none">- Große Datenmenge- Schnell und leicht zugängliche Daten- Unabhängig von Zeit und Ort- Verdichtung von vorhandenen Netzwerken- Daten von Augenzeugen- Text, Bilder, Videos	<p>Schwächen</p> <ul style="list-style-type: none">- Auswertung unstrukturierter Daten- Automatisierung der Datenauswertung- Identifizierung zweideutiger Angaben
<p>Möglichkeiten</p> <ul style="list-style-type: none">- Automatisierte Datenauswertung- Ergänzung zu traditionellen Daten- Einsatz im Katastrophenmanagement- Übertragbar auf andere Naturkatastrophen	<p>Risiken</p> <ul style="list-style-type: none">- Nur wenige Tweets lokalisierbar- Datenmanipulation- Infrastrukturelle Voraussetzungen- Kulturelle Aspekte- Legaler Aspekt