

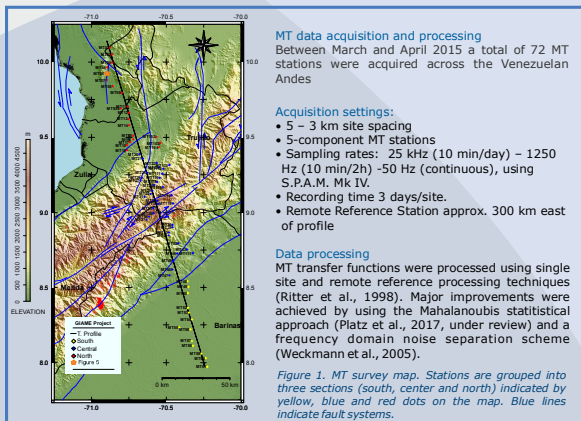
The Mérida Andes of Venezuela: Magnetotelluric forward modelling and comparison with real data

Cruces-Zabala, J.^{1,2,3}, Ritter, O.^{1,3}, Weckmann, U.^{1,4}, Tietze, K.^{1,3}, Schmitz, M.²

1 GeoForschungsZentrum Potsdam. 2 Venezuelan Foundation for Seismological Research. 3 Freie Universität Berlin. 4 Potsdam University

The GIAME Project:

The interaction of the Caribbean and South American plates in the western part of Venezuela and its relationship with the Venezuelan Andes, is not well understood from a geophysical point of view. The aim of the project is to develop a geodynamic model of the Mérida Andes and Western Venezuela, employing a wide range of geophysical methods such as gravity, seismology, seismic, GPS, MT and others.



Dimensionality and directionality analysis:

- Phase tensors (PT) (Caldwell et al., 2004) were used to describe the surface complexity of the area.
- PT beta values deviating from zero and variable orientation of PT ellipses indicate a 3D response for most of the sites towards medium/long periods
- A strike analysis using the algorithm of Becken & Burkhart (2004) suggest a regional electrical strike of 55°NW.
- Data indicates that there is more than one strike direction varying from north to south along the profile.

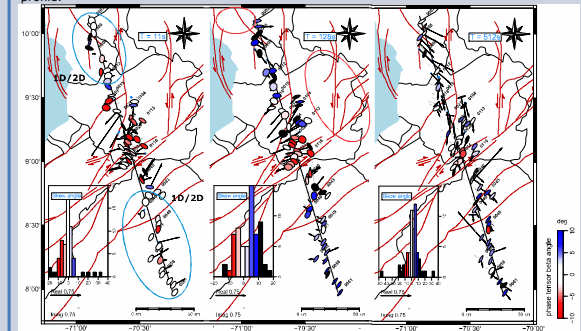
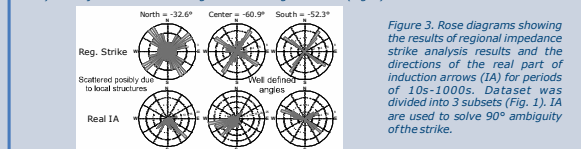


Figure 2. Phase tensor (PT) ellipses with real and imaginary induction arrows in Wiese convention, including Quaternary fault systems and histogram of skew angles. For longer periods, most PT major axis show a tendency of NE-SW strike direction but generally a 3D behaviour (high PT beta values indicated by dark colors). PT major axis in the South agree with the regional strike (Fig. 3).



Acknowledgements

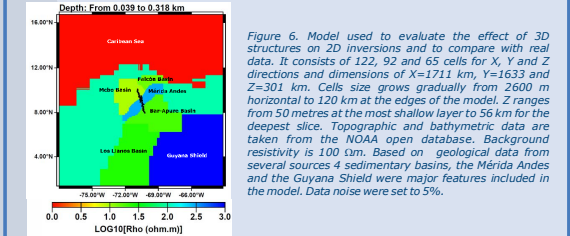
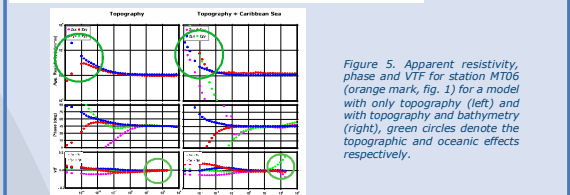
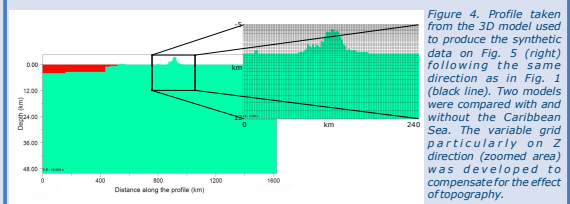
This project was carried out with the funding of the Integrated Geosciences of the Mérida Andes Project (GIAME) (FONACIT 2012002202) and the specific agreement PDVSA – FUNVISIS (12/09/2012), as well as a cooperation agreement between GFZ-Potsdam – FUNVISIS (07/12/2014). Field work would have not been possible without all the hard work from the students and personal from USF, UCV, PDVSA, FUNVISIS and GFZ-Potsdam. The equipment for this campaign was supplied by the Geophysical Instrument Pool of Potsdam (GIPP) which was fundamental for the success of the measurements. JC is funded by DAAD

Summary:

- Off-profile structures have strong influence on MT profile data: Inversion strategy based on 2D modelling with 3D control and 3D inversion with geological control.
- 3D forward modelling indicates that the Caribbean Sea has little influence (Fig. 5)
- Considering topography is important.

3D forward modelling:

- 3D forward models were developed to better understand the influence of far away structures and the effect of topography.
- Models were created on 3D grid (version 2.1.4) and ModEM (Egbert & Kelbert 2012, Meqbel 2009, Kelbert et al. 2014) with varying structural and topographic complexity.
- Topography in the survey area varies from 0 m to 3600 m asl.



2D Inversions:

- 2D Inversions were run with the MARE2DEM (Key & Ovall, 2011)
- Data sets were rotated into profile direction (-17°, black line fig. 1) for better comparison with the 3D forward modelling (FM)
- RMS values are 6.26 for FM data after 36 iterations, and 7.27 for real data after 17 iterations

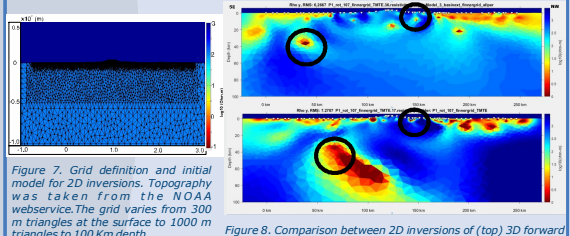


Figure 8. Comparison between 2D inversions of (top) 3D forward modelling responses with (bottom) real data inversion. Black circles denote possible off-profile 3D effects.

References

• Becken, M. & Burkhart, H. 2004. An ellipticity Criterion in magnetotelluric tensor analysis. *Geophys. J. Int.*, 159, 69-82.
 • Caldwell, G., Bibby, H., & Brown, C. 2004. The magnetotelluric phase tensor. *Geophys. J. Int.*, 158, 457-489.
 • Egbert, G. D. & A. Kelbert, 2012. Computational Recipes for Electromagnetic Inverse Problems. *Geophys. J. Int.* 189, 251-267.
 • Kelbert, A., Meqbel, N., Egbert, G. D. & Tandon, K., 2014. ModEM: A modular system for inversion of electromagnetic geophysical data. *Computers & Geosciences*, 66, 40-53.
 • Key, K., and Ovall, J. (2011). A parallel goal-oriented adaptive finite element method for 2.5-D electromagnetic modelling. *Geophysical Journal International*, 186(1), 137-154.
 • Meqbel, N. 2009. The electrical conductivity structure of the Dead Sea Basin derived from 2D and 3D inversion of magnetotelluric data. PhD thesis, Free University of Berlin, Berlin, Germany.
 • Platz, A., Weckmann, U. 2017. The Mahalanobis distance: A new measure to detect outliers in Magnetotelluric data. In Preparation.
 • Ritter, O., Junge, A., & Daves, G.J.K. 1998. New equipment and processing for magnetotelluric remote reference observations. *Geophys. J. Int.*, 132, 535-543.
 • Weckmann, U., Maguina, A., & Ritter, O., 2005. Effective noise separation for magnetotelluric single site data processing using a frequency domain selection scheme. *Geophys. J. Int.*, 161, 635-652.