



Originally published as:

Nash, M. V., Anesio, A. M., Barker, G., Tranter, M., Varliero, G., Eloë-Fadrosh, E. A., Nielsen, T., Turpin-Jelfs, T., Benning, L. G., Sánchez-Baracaldo, P. (2018): Metagenomic insights into diazotrophic communities across Arctic glacier forefields. - *FEMS Microbiology Ecology*, 94, 9.

DOI: <http://doi.org/10.1093/femsec/fiy114>

## RESEARCH ARTICLE

# Metagenomic insights into diazotrophic communities across Arctic glacier forefields

Maisie V. Nash<sup>1,\*</sup>, Alexandre M. Anesio<sup>1</sup>, Gary Barker<sup>2</sup>, Martyn Tranter<sup>1</sup>, Gilda Varliero<sup>2</sup>, Emiley A. Eloë-Fadrosch<sup>3</sup>, Torben Nielsen<sup>3</sup>, Thomas Turpin-Jelfs<sup>1</sup>, Liane G. Benning<sup>4,5,6</sup> and Patricia Sánchez-Baracaldo<sup>1</sup>

<sup>1</sup>School of Geographical Sciences, University of Bristol, UK, <sup>2</sup>School of Life Sciences, University of Bristol, UK, <sup>3</sup>DOE Joint Genome Institute, 2800 Mitchell Drive, Walnut Creek, CA 94598, US, <sup>4</sup>GFZ German Research Centre for Geosciences, Telegrafenberg, 14473 Potsdam, Germany, <sup>5</sup>School of Earth and Environment, University of Leeds, LS2 9JT, Leeds, UK and <sup>6</sup>Department of Earth Sciences, Free University of Berlin, Malteserstr, 74-100, Building A, 12249, Berlin, Germany

\*Corresponding author: School of Geographical Sciences, University Road, University of Bristol, UK, BS8 1SS. E-mail: [maisie.nash@bristol.ac.uk](mailto:maisie.nash@bristol.ac.uk) Tel: 07919382003

**One sentence summary:** Diverse communities of nitrogen fixing bacteria are identified across Arctic glacier forefields, revealed using community genomic sequencing.

**Editor:** Marek Stibal

## ABSTRACT

Microbial nitrogen fixation is crucial for building labile nitrogen stocks and facilitating higher plant colonisation in oligotrophic glacier forefield soils. Here, the diazotrophic bacterial community structure across four Arctic glacier forefields was investigated using metagenomic analysis. In total, 70 soil metagenomes were used for taxonomic interpretation based on 185 nitrogenase (*nif*) sequences, extracted from assembled contigs. The low number of recovered genes highlights the need for deeper sequencing in some diverse samples, to uncover the complete microbial populations. A key group of forefield diazotrophs, found throughout the forefields, was identified using a *nifH* phylogeny, associated with *nifH* Cluster I and III. Sequences related most closely to groups including Alphaproteobacteria, Betaproteobacteria, Cyanobacteria and Firmicutes. Using multiple *nif* genes in a Last Common Ancestor analysis revealed a diverse range of diazotrophs across the forefields. Key organisms identified across the forefields included *Nostoc*, *Geobacter*, *Polaromonas* and *Frankia*. Nitrogen fixers that are symbiotic with plants were also identified, through the presence of root associated diazotrophs, which fix nitrogen in return for reduced carbon. Additional nitrogen fixers identified in forefield soils were metabolically diverse, including fermentative and sulphur cycling bacteria, halophiles and anaerobes.

**Keywords:** nitrogen fixation; metagenomics; forefield; Arctic; diversity; diazotrophs

## INTRODUCTION

Arctic glaciers are undergoing fast retreat, exposing soils that have been locked under ice for thousands of years (Bradley,

Singarayer and Anesio 2014). Microbial communities have been identified as the primary colonisers of these newly exposed soils (Schmidt et al. 2008; Bradley et al. 2015) and are important for

Received: 27 October 2017; Accepted: 11 June 2018

© FEMS 2018. This is an Open Access article distributed under the terms of the Creative Commons Attribution License (<http://creativecommons.org/licenses/by/4.0/>), which permits unrestricted reuse, distribution, and reproduction in any medium, provided the original work is properly cited.

building up initial carbon and nitrogen pools, enhancing soil stability through the release of exopolymeric substances, and mediating forefield soil pH (Sattin et al. 2009; Schulz et al. 2013; Bradley, Singarayer and Anesio 2014). However, there is a lack of coherent understanding on the diversity and biogeochemical importance of these bacterial communities in relation to nitrogen fixation (Brankatschk et al. 2011). Bacterial nitrogen fixation uses the enzyme nitrogenase to convert atmospheric nitrogen ( $N_2$ ) into fixed ammonia ( $NH_3$ ) for biological uptake by non-diazotrophic organisms (Brill 1975). As nitrogen is a key nutrient for microbe and plant growth, nitrogen limited forefield soils may place restrictions on heterotroph colonisation, productivity and succession (Duc et al. 2009a). Subsequently, diazotrophic organisms have been proposed as crucial facilitators of succession in newly exposed forefield soils (Knelman et al. 2012). Nitrogen fixing Cyanobacteria have been identified as key in building these initial nitrogen stocks, and therefore expediting the establishment of heterotrophic organisms (Kaštovská et al. 2005; Schmidt et al. 2008; Duc et al. 2009a).

Whilst the importance of early diazotrophs is evident, similarities and variations in the nitrogen-fixing communities across forefields, in terms of both diversity and phylogeny, have received limited attention. The majority of research to date has focused on understanding changes in nitrogen fixation within individual forefields, along transects or chronosequences of soil development (Duc et al. 2009a; Brankatschk et al. 2011). Thus far, the taxonomic diversity and abundance of the *nifH* gene has been shown to decrease with soil age and distance from the glacier terminus, in line with increasing fixed nitrogen in soils, and a reduced need for diazotrophy (Duc et al. 2009a; Brankatschk et al. 2011). The dominant diazotrophic community composition in forefields is likely to be influenced by factors such as soil physicochemical status, climate, topography, the establishment of plants and any disturbances, such as water flow pathways, which may elicit both similarities and differences in diazotrophy between sites (Hodkinson, Coulson and Webb 2003; Nicol et al. 2005; Schütte et al. 2010; Liu et al. 2012). Furthermore, the current body of evidence surrounding microbial succession in forefields has a limited geographical range, with most studies conducted in the Damma Glacier forefield in Switzerland (Duc et al. 2009a; Frey et al. 2010; Bernasconi et al. 2011; Brankatschk et al. 2011; Brunner et al. 2011; Zumsteg et al. 2012, 2013; Bradley et al. 2015). Investigation across multiple glacier forefields is needed to fully explore similarities and differences between forefields in terms of diazotrophic community composition and their phylogenetic relations (Schütte et al. 2010). This will help highlight the microbial community diversity involved in nitrogen fixation among glacier forefields.

Bacterial nitrogen fixation is encoded by clustered nitrogenase genes, typically through an enzyme containing an iron (Fe) cofactor and a molybdenum-iron (Mo-Fe) cofactor (Dixon and Kahn 2004). Overall, the abundance of bioavailable nitrogen controls the transcription of nitrogenase genes, whilst the variant of nitrogenase transcribed is regulated by the presence of molybdenum (Oda et al. 2005; Teixeira et al. 2008). In the absence of Mo, nitrogenase is transcribed with vanadium (Fe-V co-factor), or exclusively with iron (Fe-Fe cofactor) in the absence of both Mo and V (Raymond et al. 2004; Teixeira et al. 2008). These nitrogenases are in turn encoded by the *nifHDK*, *vnfH-vnfD* and *anfHDK* operons (Dixon and Kahn 2004; Teixeira et al. 2008). The phylogenetically conserved *nifH* gene can be used to classify bacterial diazotrophs into Clusters I-IV based on the nitrogenase (Chien and Zinder 1996). Cluster I covers the typical Mo *nifH*, whilst Cluster II covers the alternative *vnfH* and Cluster III

generally includes a diverse range of anaerobic bacteria (Zehr et al. 2003). Furthermore, Cluster IV contains organisms with 'nif-like' sequences, as opposed to conventional *nif* genes (Zehr et al. 2003).

Previous research conducted on microbial succession in glacial forefields, including those on functional genes, has mostly focused on marker gene data, such as 16s rRNA and amplified *nifH* (Schmidt et al. 2008; Brankatschk et al. 2011; Rime, Hartmann and Brunner 2015). However, studies are now applying alternative methods, such as metagenomics, to study microbial communities (Wooley, Godzik and Friedberg 2010). This is because metagenomics provides gene sequences for the entire microbial community gene pool, rather than target sequences (Handelsman 2004; Daniel 2005). Thus, both microbial diversity and functional potential can be inferred using one approach (Wooley, Godzik and Friedberg 2010; Thomas, Gilbert and Meyer 2012). In order to maximise the quality of the output metagenome, the short DNA fragments from next generation sequencing should be assembled (Vázquez-Castellanos et al. 2014). This generates longer continuous DNA reads (contigs), which provide more accurate functional and taxonomic annotations (Howe et al. 2014; Vázquez-Castellanos et al. 2014).

In this study, we investigated 70 soil metagenomes spanning transects and chronosequences across four Arctic forefields in N-Sweden, Greenland and Svalbard. The datasets have been assembled separately and subsequently annotated for use in a comparative metagenomics analysis. Here, we present an investigation into the taxonomy and phylogenetic relationships of the functional genes recovered relating to bacterial nitrogen fixation in the four forefields. This analysis aims to contribute to the existing knowledge on pioneer microbial communities, helping to identify key genera of diazotrophic bacteria, which may have a key role building labile nitrogen stocks and soil development in oligotrophic forefield soils.

## MATERIALS AND METHODS

### Field sampling

Four Arctic glacier forefields were selected for sampling and analysis, in front of Rabots glacier (Rb), N-Sweden (67° 54' 25.6284" N, 18° 26' 51.0792" E); Storglaciaren (St), N-Sweden (67° 52' 21.1116" N, 18° 34' 2.676" E); Midtre Lovenbreen (Ml), Svalbard (79° 6' 1.8" N, 12° 9' 21.996" E) and Russell Glacier (Rl), Greenland (67° 9' 23.4324" N, 50° 3' 50.342" W). Samples were obtained in July 2013 (Midtre Lovenbreen) and July 2014 (Russell, Rabots and Storglaciaren). Surface soil from each site was sampled using a chronosequence/transect-based approach, constructing three parallel transects along the forefield moving away from the terminus (Bradley, Singarayer and Anesio 2014). Chronosequence-based sampling was used to capture the diversity in nutrient concentration and microbial taxonomy of each forefield, to make more holistic comparisons between glacial forefields. Bulk surface samples were collected into sterile Whirlpak bags, and frozen at  $-20^{\circ}\text{C}$ . Observationally, the sites comprised soils at very different development stages. A 'typical' smooth successional chronosequence from bare ground, to more developed, plant colonised soil was observed in the Ml forefield. However, the other sites sampled had a more heterogeneous chronosequence, with earlier and often more patchy plant colonisation.

## Soil organic carbon and total nitrogen content

Soil total nitrogen (TN) and total organic carbon (TOC) were determined using mass spectrometry on a FlastEA 1112 nitrogen and carbon elemental analyser. The protocol described in Hedges and Stern (1984) was used for sample preparation. In brief, for TN analysis soil samples were weighed and dried at 50°C overnight, before subsamples were transferred into tin capsules. For TOC analysis, 2 ml of 1 M HCL was incrementally added to 0.1 g of sample (Wo) until effervescence stopped. Subsequently samples were again dried overnight at 50°C, left to equilibrate with hygroscopic salts, and re-weighed (Wf). Finally, subsamples were transferred into tin vials for analysis. The percentage of TOC in each sample was calculated using a correction for acidification induced weight change (Equation 1, Supporting Information). Where possible, three environmental replicates were analysed for each TN and TOC per sampling site.

## DNA extraction, library preparation and sequencing

As this study was focused on the microbial diversity in bulk surface soil, DNA was extracted using a Mo-Bio DNAeasy PowerSoil DNA extraction kit (QIAGEN, UK), with DNA yield quantified using a Qubit 2.0 fluorometer. Samples that yielded less than 50 ng of DNA during extractions were pooled with their field replicates prior to sequencing. This method has been previously shown to obtain high DNA yields from soils and has been used for soil microbial diversity analysis in a number of studies, including root microbiomes (Fierer et al. 2007; Allison et al. 2008; Inceolu et al. 2010; Carvalhais et al. 2013; Vishnivetskaya et al. 2014). However, as this approach is not directly targeting the soil rhizosphere communities, there may be limitations to DNA extraction from this subset of the microbial community. Metagenomes were sequenced using an Illumina Next-Seq 500 (Rb, St and Rl) and an Illumina-Mi Seq (Ml), with a TruSeq library prep kit at the University of Bristol Genomics facility. A total of 70 metagenomes were sequenced across the four sites using 2x 150bp (Rb, ST, Rl) and 2x 100bp (Ml) paired-end reads (Table S1, Supporting Information). Sequencing read output for each site can be identified in Table S2 (Supporting Information), ranging between 3 817 852 and 10 510 0186 reads per metagenome.

## Metagenome assembly and annotation

The 70 sequenced datasets were quality trimmed and subsequently assembled individually using the SPAdes 3.10.0-dev assembler (Bankevich et al. 2012). These assemblies were carried out in collaboration with the DOE Joint Genome Institute (Walnut Creek, CA), using the BFC algorithm for read error correction (Li 2015), and the `-meta` and `-only-assembler` flags. Furthermore, incremental Kmer lengths were used (22, 33, 55 and 77) to identify the most appropriate value for assembly. Assembly size for each metagenome ranged between 241660 and 429543524 bases (Table S2, Supporting Information). Functional annotation of the 70 metagenomes was subsequently carried out using the Integrated Microbial Genomes with Microbiome Samples (IMG/M) system (Chen et al. 2017). Rarefaction curves were created in MG-RAST 4.0.3 for each metagenome (Figs S1–S4, Supporting Information; Meyer et al. 2008). Each metagenome was evaluated based on the number of contigs assembled and species obtained, to highlight metagenomes that may be under sampled through sequencing. Under sampling can occur in highly diverse metagenomes, where the sequencing is not adequate to reveal all taxa present in the sample (Torsvik, Øvreås and Thingstad

2002). Consequently, in under sampled datasets, some organisms, particularly those which are less abundant, may not be included in the output metagenome (Rodriguez and Konstantinidis 2014).

For each metagenome, the *nifH* gene for nitrogen fixation was searched using the Basic Local Alignment Search Tool for Proteins (BLAST-p) with an *e*-value of  $1e^{-5}$  and extracted. As *nifH* genes are generally found in a phylogenetically conserved nitrogenase cluster (with *nifD*, *nifK*, *nifN* and *nifE*), these genes were also searched for and extracted (Howard and Rees 1996). *Nif* genes were dereplicated, removing duplicate copies, using *vsearch* 2.6.0, leaving a total of 185 assembled *nif* genes for subsequent analysis (Rognes et al. 2016). The *nif* genes used for the analysis have been deposited in GenBank, under accession numbers MH551286 - MH551470. Gene abundance was calculated as a combined value of *nifHDKNE*, normalised in relation to the abundance of the bacterial single copy housekeeping gene, *rpoB*, for each site (Vos et al. 2012; Ishii et al. 2015). As this method relies on sequencing unamplified genes, the *nif* gene counts are limited and may not be exhaustive for individual samples. This is particularly the case for unamplified sequencing of complex microbiome datasets, such as soil samples (Rodriguez and Konstantinidis 2014). Additionally, diazotrophs can contain multiple different *nif* genes, and several copies of a single variant, so should not be used as a measure to enumerate the explicit number of diazotrophs in each sample (Zehr et al. 2003). Finally, the raw sequencing reads were mapped to the extracted *nif* contigs for each metagenome using the BWA-MEM algorithm (Li and Durbin 2009). The alignment score (AS) of each read/contig is reported, which numerically indicates the quality of the alignments.

## Nif taxonomy

The taxonomic distribution of all *nif* sequences (*HDKNE*) was carried out using a Last Common Ancestor (LCA) analysis in MEGAN 6.9.0 (Huson et al. 2016). For each forefield, *nifHDKNE* sequences were nucleotide BLAST (BLASTn) searched against an NCBI GenBank database of complete bacterial genomes. The sequences were subsequently binned based on the NCBI taxonomy, using an LCA algorithm, and visualised at the genus level for each forefield (Huson et al. 2016).

## Gene phylogeny

A phylogeny for *nifH*, based on clusters identified in Zehr et al. (2003), was carried out, as this gene is supported by the largest body of research. Sample *nifH* sequences were aligned to sequences of cultured isolates, largely derived from the phylogeny by Deslippe and Egger (2006). GenBank and UniProtKB accession numbers for cultured isolates are available in Table S3 (Supporting Information). DNA sequence alignments were generated in SATé 2.2.7, using MAFT, MUSCLE and FASTTREE (Liu et al. 2011). The GTR+CAT model was implemented, with the decomposition set to longest (to minimise long branch attraction) and a maximum number of iterations set to 8. Alignments were manually edited in Mesquite, alongside generating Nexus and Phylip format files (Maddison and Maddison 2017). Maximum likelihood phylogenies were carried out using the CIPRES implementation of RAXML-HPC2 8.2.10 on XSEDE<sup>1</sup>, with 1000 bootstrap iterations (Stamatakis 2014). The GTR+G

<sup>1</sup> <https://www.phylo.org/>

**Table 1.** Summary statistics for TN and TOC across the four forefields (Midtre Lovenbreen Ml, Russell Rl, Storglaciaren St and Rabots Rb). The average, minimum, maximum and standard deviation (SD) across each forefield is given. The detection limit for both TN and TOC was 0.1 mg g<sup>-1</sup>. Sites recording values below detection (b.d.) are shown.

TN (mg g <sup>-1</sup> )	Average	Minimum	Maximum	SD
Ml	b.d.	b.d.	4.90	1.56
Rl	1.95	b.d.	6.94	2.15
St	b.d.	b.d.	4.19	0.93
Rb	1.04	b.d.	3.35	1.33
TOC (mg g <sup>-1</sup> )	Average	Minimum	Maximum	SD
Ml	10.56	b.d.	72.36	21.14
Rl	26.36	b.d.	82.70	26.35
St	2.78	b.d.	27.89	6.25
Rb	6.81	b.d.	22.90	9.66

model of nucleotide substitutions was implemented, as identified with j model test (Guindon and Gascuel 2003; Darriba et al. 2012). Trees were evaluated using Figtree 1.4.3<sup>2</sup>, before annotation with EvolView v2<sup>3</sup> (He et al. 2016). Graphical enhancements were made using Inkscape 0.92.4<sup>4</sup>. Comparisons between nifH sample sequences and cultured isolates were made using NCBI BLASTn<sup>5</sup>, to identify nearest cultured relatives.

## RESULTS AND DISCUSSION

### Soil carbon and nitrogen

The range of values obtained within and between forefields for TOC and TN for samples from each forefield is listed in Table 1. These values include TOC and TN from both microbial and plant sources. Looking at average nutrient contents, comparing across the forefields, TN content ranges from averages below detection to 1.95 mg g<sup>-1</sup>, between St and Rl, respectively (Table 1). TOC content follows the same trend, increasing from the two Swedish glaciers (St and Rb), to Ml and Rl. Results from a one-way ANOVA analysis for each nutrient did not show any statistically significant differences in the TN measured between forefields ( $P > 0.05$ ). However, concentrations of TOC were found to vary significantly ( $P = 0.002$ ) (Table S4, Supporting Information). Additional analysis of the TOC variance between forefields using a post-hoc Tukey analysis revealed the significant difference was between the St and Rl forefields, with Rl containing almost 10 times the TOC content of St on average ( $P < 0.01$ , Table 1; Table S5, Supporting Information).

Samples from the Rl forefield revealed the widest range in both TOC (below detection–82.70 mg g<sup>-1</sup>) and TN (below detection–6.94 mg g<sup>-1</sup>), respectively (Table 1). This contrasts with the Rb forefield, where TOC and TN values expressed a smaller range, from below detection to 22.90 mg g<sup>-1</sup> and below detection up to 3.35 mg g<sup>-1</sup>, respectively. A range of values is expected across sites within each forefield, due to soil development which takes place over successional chronosequences and given variations in sources of autochthonous and allochthonous material (Bradley, Singarayer and Anesio 2014), for example, in

the deposition of aeolian material (such as soot), or the presence of ancient *in situ* organic pools, exposed by glacier retreat (Tranter et al. 2005; Schulz et al. 2013; Bradley et al. 2015). For example, across the Ml chronosequence TN and TOC increase from below detection and 2.85 mg g<sup>-1</sup>, to 4.4 mg g<sup>-1</sup> and 14.5 mg g<sup>-1</sup>, in line with expected soil development (Table S6, Supporting Information; Bradley et al. 2016). However, whilst differences in soil nutrient content do occur between sites, the values fall into the general range observed from other forefields (1–2 mg g<sup>-1</sup> nitrogen, and 0.1–40 mg g<sup>-1</sup> carbon) (Bradley, Singarayer and Anesio 2014) and are indicative of a generally oligotrophic environment.

### Rarefaction analysis

Rarefaction analysis was used to investigate the coverage of diversity in each metagenome, identifying any datasets where species content may be under sampled (Figs S1–S4, Supporting Information). For each forefield, an assortment of both adequately sequenced and under sampled metagenomes was obtained (Figs S1–S4, Supporting Information). Metagenomes that show rarefaction curves to reach saturation are likely to adequately profile the microbial diversity in the samples, for example metagenomes Ml 7, Rl 15, St 16 and St 17 (Figs S1, S2 and S3, Supporting Information). However, those metagenomes in which species number does not reach saturation are most likely to exclude taxa, for example Ml1, Ml 20, Rl 14 and Rl 20 (Fig. S1 and S2, Supporting Information). In these metagenomes, the least abundant taxa are most probably excluded from the dataset, due to the reduced abundance of DNA for sequencing from these organisms (Rodriguez and Konstantinidis 2014). Whilst this does not detract from conclusions drawn on the organisms present in the samples, the full depth of diversity in under sampled metagenomes cannot be highlighted. This issue is often prevalent in highly complex datasets such as soil and can only be resolved through continued deeper sequencing of those metagenomes (Rodriguez and Konstantinidis 2014).

### Nif genes recovered

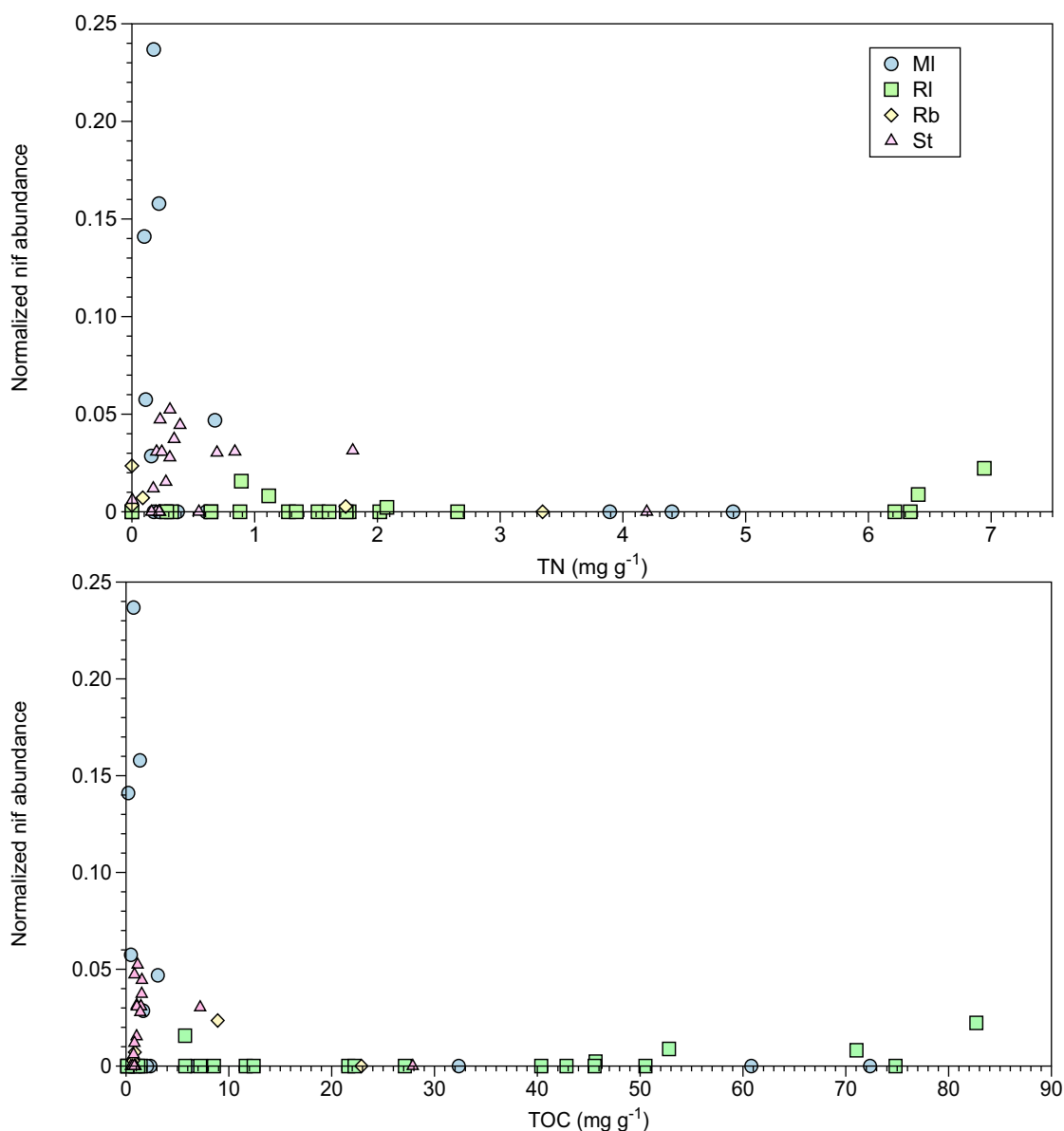
The total abundance of dereplicated *rpoB* normalised contigs containing nif genes (nifHDKNE), in relation to the variation of TN and TOC, spanning all sampling sites is shown in Fig. 1. A total of 185 nif genes contained on assembled contigs were recovered from the datasets. In 75% of samples where nif genes were detected, the TN and TOC concentrations fell below 1 and 5 mg g<sup>-1</sup>, respectively (Fig. 1). Conversely, in samples where nif genes were not detected, 61% and 49% measured below 1 and 5 mg g<sup>-1</sup>, of TN and TOC, respectively (Fig. 1). As sequencing output varied substantially between metagenomes, further sequencing may reveal additional genes due to the complex nature of soil microbiome samples (Table S2, Supporting Information; Rodriguez and Konstantinos 2014). However, this may indicate that samples with limited TN/TOC could have a larger relative abundance of genes for diazotrophy, as these were recovered through the sequencing effort undertaken. Interestingly, a similar trend between nitrogen fixation and TN has been reflected by the assays carried out by Telling et al. (2011), whereby fixation rates on Arctic glaciers were negatively correlated with total inorganic nitrogen content. Additionally, a link between nif gene abundance and activity is supported theoretically, as fixation becomes less metabolically beneficial when labile nitrogen stocks increase (Gutschink et al. 1978). When applied to forefield soils, both TN and TOC have been shown to increase over successional chronosequences, indicating nitrogen fixation may

<sup>2</sup> <http://tree.bio.ed.ac.uk/software/figtree/>

<sup>3</sup> <http://www.evolgenius.info/evolview/>

<sup>4</sup> <https://inkscape.org/en/>

<sup>5</sup> <https://blast.ncbi.nlm.nih.gov/>



**Figure 1.** Relationship between normalised *nif* gene abundance (*nifHDKNE*) and concentration of TOC and TN per gram of soil, across all sampling sites. *Nif* gene abundance values are normalised against the bacterial single copy housekeeping gene, *tpoB*, for each metagenome. Values across the different forefields are noted, including: Midtre Lovenbreen (MI), Russel (RI), Rabots (Rb) and Storglaciaren (St).

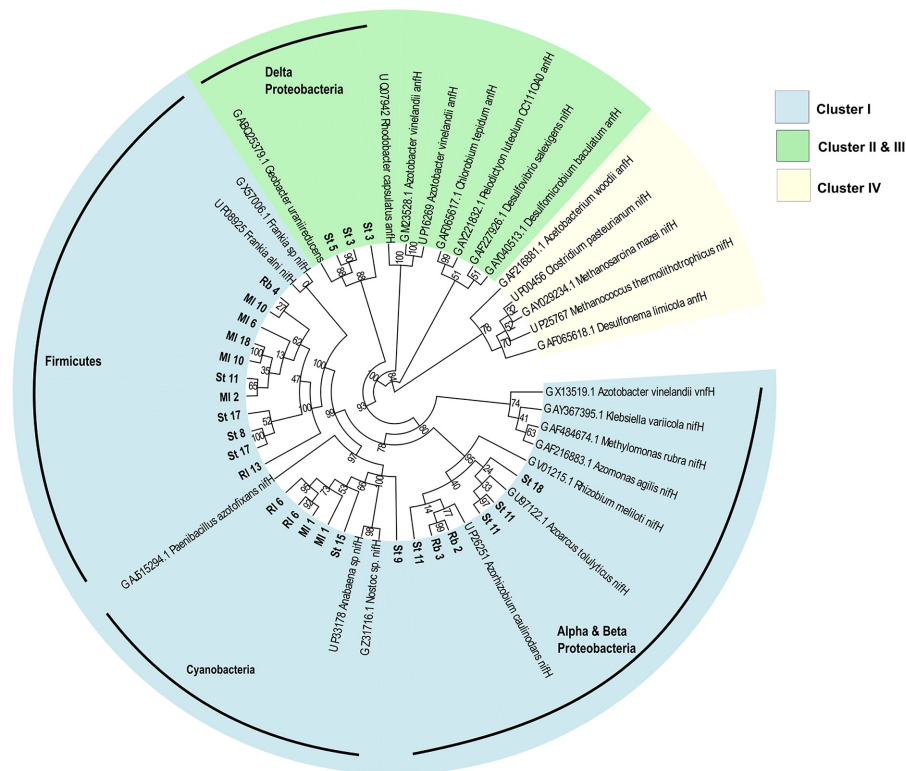
become less profitable with soil development (Duc et al. 2009a; Brankatschk et al. 2011; Bradley, Singarayer and Anesio 2014). Furthermore, research by Brankatschk et al. (2011) identified a link between *nif* gene abundance and enzyme activity, indicating sites with high numbers of *nif* genes, such as Storglaciaren, would have enhanced nitrogen fixation activities. However, the relationship between gene abundance and nitrogen fixation activity is not always fully defined, as areas with low nitrogenase activity have previously been linked to high gene abundance in the Damma Glacier (Swiss Alps) (Duc et al. 2009a).

The results of mapping sequencing reads to the *nif* genes is provided in Table S7 (Supporting Information). This highlights the Alignment Score (AS), which indicates the alignment quality between reads and contigs (Table S7, Supporting Information). The number of *nif* genes for each score threshold is provided, alongside the percentage of reads with AS over 60. The Alignment Score ranges between 0 and the maximum length of the

reads (0–100 for MI dataset and 0–150 for Rb, St and RI datasets). For each forefield, the percentage of alignments with an AS greater than 60 was  $1.06 \times 10^{-3}$  (MI),  $4.23 \times 10^{-5}$  (RI),  $2.38 \times 10^{-4}$  (Rb) and  $9.56 \times 10^{-4}$  (St). Plots of the normalised *nif* genes recovered and the number of reads aligning to genes with an AS over 60, for each metagenome, are available in Figs S5–S8 (Supporting Information).

### Nitrogenase clusters

Our newly sampled bacteria were analysed and grouped with previously published relatives, as shown in Zehr et al. (2003). Forefield sequences were distributed across Cluster I (23 sample sequences) and III (3 sample sequences), with no representatives in Cluster II or IV (Fig. 2). Thus, 88.5% of sample sequences were attributed to Cluster I, which contains the typical Mo *nifH*,



**Figure 2.** *nifH* maximum likelihood phylogeny of sample sequences (bold) and sequenced samples derived from NCBI GenBank and UniProtKB. Most sample sequences were obtained from the *nifH* phylogeny of Deslippe and Egger (2006). For study samples, the Sample ID is given, corresponding to Table S1 (Supporting Information). For sequenced samples, the database, organism name and gene are given. Bootstrap support values are given, based on 1000 tree iterations. The *nifH* clusters (derived from Zehr et al. 2003) are denoted by leaf colours (Cluster I-IV). The tree is rooted on Cluster IV, as this group contains divergent 'nif-like' sequences (Zehr et al. 2003). Key groups containing sample sequences are noted, including Firmicutes, Cyanobacteria, Alphaproteobacteria, Betaproteobacteria and Deltaproteobacteria.

indicating the presence of plentiful molybdenum in soils for the nitrogenase cofactor (Zehr et al. 2003).

Environmental samples in Cluster I included the groups Alphaproteobacteria, Betaproteobacteria, Cyanobacteria and Firmicutes (Fig. 2). The first group, associated with Alphaproteobacteria and Betaproteobacteria, incorporated five environmental samples that clustered most closely with *Azorhizobium caulinodans* and *Azarcus tolulyticus*. These are plant-associated diazotrophs, important for establishing stocks of fixed nitrogen for legume uptake, supporting plant growth (Hurek and Hurek 1995; Dreyfus, Garcia and Gillis 1988). The second group was comprised of six sample sequences, clustering with the Cyanobacteria, *Nostoc* and *Anabaena*, which are free living nitrogen fixers (Zehr et al. 2003). Cyanobacteria have been proposed as crucial for building labile nitrogen pools in newly exposed soils, important for facilitating heterotroph colonisation, and have been identified in other forefields using SSU rRNA amplicon sequencing (Schmidt et al. 2008; Duc et al. 2009a; Frey et al. 2013). Group 3 contained 11 highly related sample *nifH* sequences, grouping closely to *Frankia*. This genus is composed of nitrogen fixing bacteria that are symbionts of actinorhizal plant roots, and again provides evidence for bacterial support of plant growth and establishment, through supplies of fixed nitrogen (Benson and Silvester 1993). Whilst the forefields may have a low diversity of root symbiotic diazotrophs, this may also relate to sub-optimal cell lysis and separation of root-associated cells during the DNA extraction process, or that these organisms were at a low abundance and thus not captured through sequencing.

Environmental samples were also present in Cluster III, which is attributed to a group of anaerobic bacteria (Zehr et al.

2003). The three sample sequences clustered most closely to *Geobacter uraniireducens*, an anaerobe common in sediments under metal reducing conditions, capable of dissimilatory Fe(III) reduction (Shelobolina et al. 2008). However, no sample sequences were linked to Cluster II, which is associated with organisms containing the alternative *anfH*, containing an Fe-Fe cofactor, used in the absence of molybdenum and Vanadium (Zehr et al. 2003).

These results reflect those of Duc et al. (2009a), who used clone libraries to evaluate the phylogeny of diazotrophs across the Damma Glacier, Switzerland. Interestingly, *nifH* sequences from their analysis also grouped with nitrogenase Clusters I and III (Duc et al. 2009a). Additionally, genera identified by Duc et al. (2009a) included the key genera identified in this analysis, such as *Geobacter*, *Nostoc* and *Anabaena*, suggesting that these organisms are common across forefields (Duc et al. 2009a). The prevalence of these organisms may be due to adaptations or attributes to cold environments, such as cold or UV tolerance, and the release of protective exudates (Tamaru et al. 2005; Chattopadhyay 2006; Pattanaik, Schumann and Karsten 2007). Cyanobacteria such as *Nostoc* have been shown to produce extracellular polysaccharides (EPS) which are important for desiccation and freeze-thaw tolerance in Arctic environments (Tamaru et al. 2005). *Geobacter* are commonly found in anaerobic environments, and therefore may tolerate any anoxia in forefield soils created by frequent meltwater flooding and the formation of melt pools (Duc et al. 2009a). The consistent identification of *Geobacter*, *Nostoc* and *Frankia* in forefield soils using *nifH* analysis indicates that a core group of diazotrophs may be present across

Arctic forefields. These diazotrophs may be important for facilitating plant colonisation and establishment, either by building labile pools in newly exposed soils (Cyanobacteria) or through symbiosis (*Frankia*, *Azorhizobium*).

Results from BLASTn searching each *nifH* sequence against cultured isolates revealed forefield sample sequences were divergent, with sequence identity ranging between 80%–95% (Table S8, Supporting Information). This indicates that the diazotrophs present in the samples are novel compared to those which have been previously identified and may be unique or contain adaptations to cold oligotrophic forefield conditions. However, as less abundant organisms will contribute to a minor proportion of the unamplified sequenced DNA and *nifH* gene pool, using additional *nif* genes may help highlight the presence of rare organisms in samples (Cowan et al. 2005). This may be especially helpful for metagenomes where sequencing coverage was not sufficient to profile the complete community structure, and thereby some low abundance organisms may not have been represented in the final dataset (Figs S1–S4, Supporting Information).

### Diazotroph community structure

LCA analysis with multiple *nif* genes (HDKNE) identified the key organisms consistent between two or more forefields, including *Geobacter*, *Frankia* and *Nostoc*, which were also highlighted in the *nifH* analysis. Additional genera, for example *Polaromonas*, *Pelobacter* and *Microcoleus* were also identified here through the inclusion of additional *nif* genes (*nifDKNE*) (Fig. 3). This suggests including multiple nitrogenase genes provides a more holistic view of the diazotroph community structure in each forefield, due to the low copy number of these genes in unamplified samples. This is a particular issue of highly diverse metagenome samples, such as those from soils, as sequencing depth may not profile the complete community structure (Rodríguez and Konstantinidis 2014).

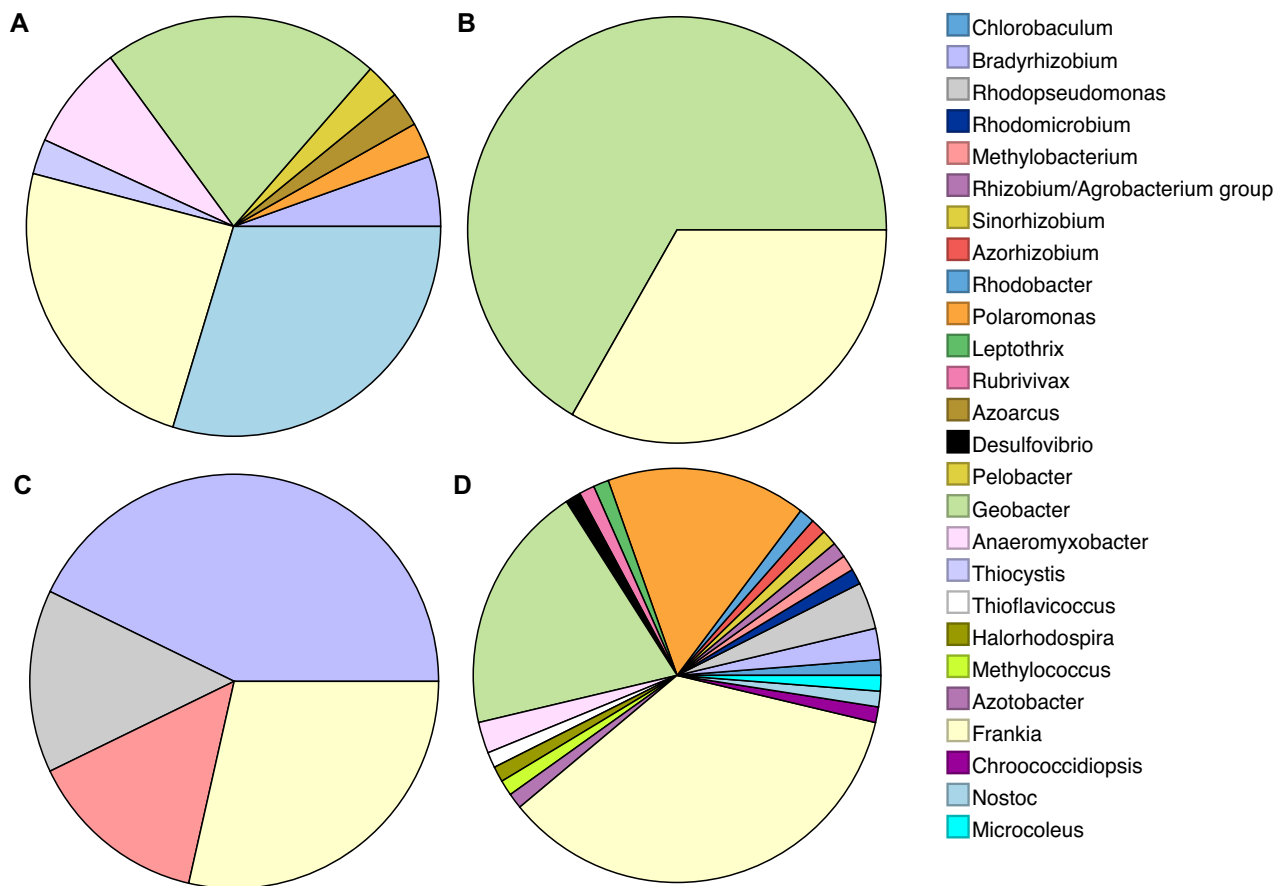
The assignment of *nif* genes in the Rl forefield covers two key genera, *Geobacter* and *Frankia*. Limited research has been conducted into the presence of *Frankia* in Greenland; however, these organisms are typically associated with common actinorhizal plants (Benson and Silvester 1993; Chaia, Wall and Huss-Danell 2010). This group forms nitrogen fixing root nodules with *Frankia* in exchange for reduced carbon and therefore are commonly found as early colonisers of undeveloped, oligotrophic soils (Wall 2000; Schwinter 2012). This is in agreement with the limited nitrogen content detected in this forefield, at 2.04 TN g<sup>-1</sup> (Fig. 1 and Table 1). Additionally, the presence of plants has been identified as a key control on microbial community structure over the Damma Glacier forefield, Switzerland (Miniaci et al. 2007). Furthermore, the identification of the anaerobic *Geobacter* indicates the presence of periodically saturated and anoxic conditions along the forefield, possibly attributed to meltwater flooding (Duc et al. 2009a). *Geobacter* are dissimilatory metal and sulphur reducing bacteria and have been proposed as key players in sediment nutrient cycles, oxidation of organic matter, bioremediation and soil gleying (Lovley 1993; Childers et al. 2002; Methe et al. 2003). *Geobacter* have been consistently identified across glacier forefield soils, which may relate to their metabolic diversity, thereby making these organisms well suited to fluctuating environmental conditions in forefield soils (Duc et al. 2009a,b; Edwards and Cook 2015; Rime, Hartmann and Brunner 2015). This group has been shown to use chemotaxis to access Fe(III) oxides as an electron acceptor, which may explain their

prevalence over other non-motile Fe(III) reducers (Rime, Hartmann and Brunner 2015). Whilst deeper sequencing in some metagenomes may highlight additional rare diazotrophic bacteria in Rl samples, it is likely that *Geobacter* and *Frankia* were the most dominant nitrogen fixers present, as these were identified through direct sequencing of unamplified DNA (Cowan et al. 2005; Fig. S2, Supporting Information).

Similarly to Rl, the taxonomic diversity detected in the N-Swedish Rb forefield was largely comprised of root associated diazotrophs, including the genera *Bradyrhizobium*, *Frankia*, *Methylobacterium* and *Rhodopseudomonas* (Fig. 3). This may relate to the lack of bare soil observed at this forefield, and therefore limited requirement for free living diazotrophs (Miniaci et al. 2007). This site also had a low average soil nitrogen content, at 1.04 mg g<sup>-1</sup> (Fig. 1 and Table 1), which, alongside the detection of *Rhizobia*, Fabaceae root-nodule symbionts, indicates that nitrogen limitation for plant growth may have been occurring in soils (Mylona, Pawlowski and Bisseling 1995). Actinorhizal and legume plants, which directly benefit from biological nitrogen fixation through symbiosis, such as Clover, are likely to prevail in developing forefield soils (Fagerli and Svenning 2005; Chaia, Wall and Huss-Danell 2010). This is because they maintain a competitive advantage over other plants in nitrogen limited conditions, typical of newly exposed soils (Menge and Hedin 2009; Bradley, Singarayer and Anesio 2014). Additionally, Rb had a lower average soil TOC content than other forefields, at 6.8 mg g<sup>-1</sup> (Fig. 1 and Table 1). Thus, *Rhizobia* are likely to benefit from symbiosis with plants through the supply of reduced carbon (Denison and Kiers 2004). Plants may therefore be acting as a control on the forefield microbial community structure, endorsing the presence of root-associated diazotrophs (Miniaci et al. 2007). Rarefaction curves for Rb sites were shown to be nearing saturation, indicating much of the microbial community structure was profiled (Fig. S4, Supporting Information). Additional sequencing for these samples may reveal further low abundance taxa; however, it is likely that the most dominant fraction of diazotrophs have been identified adequately through our analysis.

The *nif* genes recovered from the Ml forefield showed a wider taxonomic diversity of diazotrophs and contained sequences linked to the genera *Nostoc*, *Polaromonas*, *Bradyrhizobium*, *Pelobacter*, *Azoarcus* and *Anaeromyxobacter*. The presence of the Cyanobacteria, *Nostoc*, was expected due to the greater extent of bare soil observed in this forefield, enhancing the need for early colonisers (Frey et al. 2013). Additionally, EPS production enables this group to resist harsh freeze-thaw cycles, common in Arctic environments (Tamaru et al. 2005). Given the high latitude of this forefield, it is also not surprising to find *Polaromonas*, which are known psychrophiles (Irgens, Gosink and Staley 1996). The presence of *Bradyrhizobium* and *Frankia* indicate plants may require additional fixed nitrogen through symbiosis, corresponding with the low nitrogen stocks detected (Benson and Silvester 1993; Mylona, Pawlowski and Bisseling 1995; Chaia, Wall and Huss-Danell 2010; Fig. 1 and Table 1). Additionally, the presence of legume symbiotic diazotrophs is interesting, as Fabaceae are non-native to Svalbard, having been introduced over the 20th Century (Fagerli and Svenning 2005). The absence of early plant colonisation in the forefield may also have been a control on overall microbial community structure, endorsing a range of non-symbiotic diazotrophs (Knelman et al. 2012). Alongside *Geobacter*, the identification of *Pelobacter*, *Thiocystis* and *Anaeromyxobacter*, again indicates permanent or periodic anaerobic conditions in the glacier forefield, similarly to Rl (Schink and Stieb 1983; Sanford et al. 2002). *Pelobacter* are anaerobic organisms containing diverse fermentative





**Figure 3.** Taxonomic distribution of *nif* (HDKNE) genes for each forefield at the genus level: Midtre Lovenbreen Ml (A), Russell Rl (B), Rabots Rb (C), Storglaciaren St (D). The total *nif* gene sequence count for each site was 42, 15, 13 and 91, respectively.

metabolisms, which may make this group well suited to the rapidly changing conditions in forefield soils (Schink 2006). For example, *Pelobacter* have been shown to ferment acetylene using acetylene hydratase to acetate for cell growth or using nitrogenase to ethylene through nitrogen fixation (Akob et al. 2017). The genomic results for the Ml forefield falls in line with 16s amplicon data presented by Bradley et al. (2016). This study also found *Frankia*, *Rhizobium*, *Nostoc* and *Geobacter* in the Ml forefield (Bradley et al. 2016). The identification of additional organisms such as *Devosia*, *Sphingomonas* and *Rhodoplanes* may relate to the use of amplification in their methodology, thereby aiding the discovery of low abundance organisms (Bradley et al. 2016). Additionally, some metagenomes from this forefield would have benefitted from greater sequencing depth in order to completely profile the microbial community composition (Fig. S1, Supporting Information). Therefore, deep sequencing of these samples may reveal additional low abundance diazotrophs, unidentified in this analysis.

Finally, the St forefield contained sequences relating to *Nostoc*, *Geobacter*, *Rhizobium*, *Polaromonas* and *Frankia*, in line with the other forefields sampled (Fig. 3). This supports the identification of a core group of diazotrophs present across Arctic glacier forefields. However, several diazotrophs detected at this site may also have importance in sulphur cycling, alongside nitrogen fixation (Fig. 3). The detection of the anaerobic diazotrophs *Geobacter* and *Desulfovibrio* indicates the potential for sulphur reduction, whereby energy is gained through reducing sulphur (S) or

sulphate ( $\text{SO}_4^{2-}$ ) to hydrogen sulphide ( $\text{H}_2\text{S}$ ), with the oxidation of organic carbon (Boopathy and Kulpa 1993; Caccavo et al. 1994). However, inorganic S and  $\text{SO}_4$  have been found to be limiting for both plants and microbes in newly exposed glacier forefield soils (Allison et al. 2007; Prietzel et al. 2013). Nevertheless, desulphonating bacteria, whom metabolise organically bound sulphur to labile sulphates, have been found in forefield soils, and may therefore help overcome S limitation (Schmalenberger and Noll 2009; Prietzel et al. 2013). Additionally, suitable anaerobic growth conditions for sulphur reducing bacteria may occur frequently in stagnated proglacial meltwater pools and during periods of meltwater flushing (Duc et al. 2009a). Furthermore, the detection of organisms such as *Chlorobaculum*, *Thioflaviccoccus*, *Halorhodospira* and *Thiocystis* indicates the potential for St forefield bacteria to carry out both nitrogen fixation and sulphur oxidation (Fig. 3). These organisms have the potential to oxidise  $\text{H}_2\text{S}$  to S and  $\text{SO}_4$ , alongside gaining fixed nitrogen through diazotrophy (Imhoff and Pfenning 2001; Chan, Morgan-Kiss and Hanson 2008; Peduzzi et al. 2011; Challacombe et al. 2013). The ability of these organisms to overcome nitrogen limitation through fixation, and to respire anaerobically in anoxic soils, may make this group well suited to harsh forefield environments. Additionally, as *Halorhodospira* is also halophilic, this may indicate resistance to high salinity environments, such as ice brine channels, or evaporation ponds in the St forefield (DasSarma and DasSarma 2006).

The diazotroph community composition observed using LCA nifHDKNE analysis was again largely consistent with those found at the Damma Glacier, Switzerland (Duc et al. 2009a,b; Frey et al. 2013). This includes genera such as *Methylobacterium*, *Bradyrhizobium*, *Azotobacter*, *Anabaena*, *Nostoc* and *Geobacter* (Duc et al. 2009a). This supports the results from the nifH phylogeny, indicating the presence of consistent genera across forefields, which may be well adapted to the cold, oligotrophic and high UV conditions. Plant colonisation has also been identified as an influence on the diazotrophic community composition, in agreement with studies on the Damma Glacier, Switzerland (Miniaci et al. 2007; Duc et al. 2009a; Zumsteg et al. 2012). However, it is important to acknowledge that additional factors, such as latitude, bedrock mineralogy, organic matter and aeolian nitrogen deposition, may also have an influence on diazotroph community structure and abundance (Duc et al. 2009a; Zumsteg et al. 2012). Some genera found by Duc et al. (2009a), such as *Oscillatoria*, *Ideonella* and *Paenibacillus* were not identified in this study (Fig. 3). This may relate to the absence of these organisms in the four forefields in this analysis, but also may relate to the alternate approach used. As this analysis uses unamplified nifH sequences, some low abundance organisms may not be sequenced due to incomplete sequencing depth in highly complex samples (Rodriguez and Konstantinos 2014; Figs S1–S4, Supporting Information). Thus, it cannot be ruled out that these organisms were also not present in the forefields, but at a lower abundance than those captured by the sequencing effort (Prakash and Taylor 2012). In order to profile the complete community of some metagenomes, including low abundance organisms, deeper sequencing would be required, due to the diverse nature of soil samples (Rodriguez and Konstantinos 2014). Despite this, this analysis has been able to capture a diverse group of diazotrophs that appear to be common across glacier forefields and are likely the most abundant fraction of the nitrogen fixing community, as these were captured by unamplified DNA sequencing (Rodriguez and Konstantinos 2014).

Overall, this study has used a nifH phylogeny to identify a key group of diazotrophs across four Arctic forefields, associated with both Cluster I and III nitrogenase, linked to aerobic and anaerobic organisms containing the typical Mo nifH (Zehr et al. 2003). Incorporating multiple nif genes (HDKNE) revealed additional organisms from unamplified metagenome samples, compared to using the nifH gene exclusively. This may relate to the complex nature of soil metagenome samples, whereby sequencing depth is not always adequate to profile the complete microbial community diversity. Thus, to reveal all low abundance diazotrophs, some metagenomes would require additional deep sequencing. Key diazotrophs were found to be metabolically diverse, including genera such as *Geobacter*, *Frankia*, *Nostoc*, *Polaromonas* and *Bradyrhizobium*. A range of diazotrophic organisms outside the key group were also highlighted, including halophiles, psychrophiles and bacteria associated with fermentative metabolisms and sulphur cycling. Therefore, this analysis has shown a diverse group of diazotrophic bacteria present in Arctic forefield soils, including a consistent core subset. These diazotrophs have the potential to build labile nitrogen stocks in forefield soils, which may support further colonisation and soil development.

## SUPPLEMENTARY DATA

Supplementary data are available at [FEMSEC](https://academic.oup.com/femsec) online. The nif sequences used for analysis have been deposited in GenBank under accession numbers MH551286 - MH551470.

## ACKNOWLEDGEMENTS

We would like to thank Katherine Wright, Joshua Blacker and James Bradley for assistance with field sampling, Jane Coghill and Christy Waterfall at the Bristol Genomics Facility for DNA sequencing and Nathan Christmas for data analysis support. We also acknowledge the NERC facilities in Ny-Ålesund and the Tarfala Research Station, which aided fieldwork sampling. We would like to thank the two reviewers, whose comments have helped to refine the manuscript.

## FUNDING

This work was carried out as part of the NERC GW4+ Doctoral Training Partnership, awarded to MN. Funding support was provided through NERC grants NE/J02399X/1, awarded to AA and NE/J022365/1 awarded to LGB. Funding support for PS-B came from a Royal Society University Research Fellowship and LGB also acknowledges the financial support through the Helmholtz Recruiting Initiative. Funding support for GV came from the European Union's Horizon 2020 research and innovation programme under the Marie Skłodowska-Curie grant agreement No 675546 – MicroArctic. The work conducted by the U.S. Department of Energy Joint Genome Institute, a DOE Office of Science User Facility, is supported by the Office of Science of the U.S. Department of Energy under Contract No. DE-AC02-05CH11231.

**Conflict of interest.** None declared.

## REFERENCES

- Akob, DM, Baesman SM, Sutton JM et al. Detection of diazotrophy in the acetylene-fermenting anaerobe *Pelobacter* sp. strain SFB93. *Appl Environ Microb* 2017;**83**:e01198–17.
- Allison SD, Treseder KK. Warming and drying suppress microbial activity and carbon cycling in boreal forest soils. *Global Change Biol* 2008;**14**:2898–909.
- Allison VJ, Condron LM, Peltzer DA et al. Changes in enzyme activities and soil microbial community composition along carbon and nutrient gradients at the Franz Josef chronosequence, New Zealand. *Soil Biol Biochem* 2007;**39**:1770–81.
- Bankevich A, Nurk S, Antipov D et al. SPAdes: a new genome assembly algorithm and its applications to single-cell sequencing. *J Comput Biol* 2012;**19**:455–77.
- Benson DR, Silvester WB. Biology of *Frankia* strains, actinomycete symbionts of actinorhizal plants. *Microbiol Rev* 1993;**57**:293–319.
- Bernasconi SM, Bauder A, Bourdon B et al. Chemical and biological gradients along the Damma glacier soil chronosequence, Switzerland. *Vadose Zone J* 2011;**10**:867–83.
- Boopathy R, Kulpa CF. Nitroaromatic compounds serve as nitrogen source for *Desulfovibrio* sp.(B strain). *Can J Microbiol* 1993;**39**:430–3.
- Bradley J, Singarayer J, Anesio A. Microbial community dynamics in the forefield of glaciers. *Proc Royal Soc B* 2014;**28**:1–9
- Bradley JA, Anesio AM, Singarayer JS et al. SHIMMER (1.0): a novel mathematical model for microbial and biogeochemical dynamics in glacier forefield ecosystems. *Geosci Model Dev Discussions* 2015;**8**:6143–216.
- Bradley JA, Arndt S, Sabacká M et al. Microbial dynamics in a High Arctic glacier forefield: a combined field, laboratory, and modelling approach. *Biogeosciences* 2016;**13**:5677.

- Brankatschk R, Töwe S, Kleineidam K et al. Abundances and potential activities of nitrogen cycling microbial communities along a chronosequence of a glacier forefield. *ISME J* 2011;**5**:1025–37.
- Brill WJ. Regulation and genetics of bacterial nitrogen fixation. *Annu Rev in Microb* 1975;**29**:109–29.
- Brunner I, Plötze M, Rieder S et al. Pioneering fungi from the Damma glacier forefield in the Swiss Alps can promote granite weathering. *Geobiology* 2011;**9**:266–79.
- Caccavo F, Loneragan DJ, Lovley DR et al. *Geobacter sulfurreducens* sp. nov., a hydrogen-and acetate-oxidizing dissimilatory metal-reducing microorganism. *Appl Environ Microb* 1994;**60**:3752–9.
- Carvalhais LC, Dennis PG, Badri DV et al. Activation of the jasmonic acid plant defence pathway alters the composition of rhizosphere bacterial communities. *PLoS One* 2013;**8**:e56457.
- Chaia EE, Wall LG, Huss-Danell K. Life in soil by the actinorhizal root nodule endophyte *Frankia*. A review. *Symbiosis* 2010;**51**:201–26.
- Challacombe JF, Majid S, Deole R et al. Complete genome sequence of *Halorhodospira halophila* SL1. *Stand Genomic Sci* 2013;**8**:206.
- Chan LK, Morgan-Kiss R, Hanson TE. Sulfur oxidation in *Chlorobium tepidum* (syn. *Chlorobaculum tepidum*): genetic and proteomic analyses. In: Dahl C., Friedrich C.G., Springer, Berlin Heidelberg (eds). *Microbial Sulfur Metabolism* 2008;117–26.
- Chattopadhyay MK. Mechanism of bacterial adaptation to low temperature. *J Biosci* 2006;**31**:157–65.
- Chen I-MA, Markowitz VM, Chu K et al. IMG/M: integrated genome and metagenome comparative data analysis system. *Nucleic Acids Res.* 2017;**45**:D507–16.
- Chien YT, Zinder SH. Cloning, functional organization, transcript studies, and phylogenetic analysis of the complete nitrogenase structural genes (*nifHDK2*) and associated genes in the archaeon *Methanosarcina barkeri* 227. *J Bacteriol* 1996;**178**:143–8.
- Childers Susan E, Ciuffo Stacy, Lovley Derek R. *Geobacter* metal-reducing accesses insoluble Fe (III) oxide by chemotaxis. *Nature* 2002;**416**:767–9.
- Cowan D, Meyer Q, Stafford W et al. Metagenomic gene discovery: past, present and future. *TRENDS Biotechnol* 2005;**23**:321–9.
- Daniel R. The metagenomics of soil. *Nat Rev Microb* 2005;**3**:470–8.
- Darriba D, Taboada GL, Doallo R et al. jModelTest 2: more models, new heuristics and parallel computing. *Nat Methods*, 2012;**9**:772.
- DasSarma S DasSarma P. Halophiles, In: Encyclopedia of Life Sciences, John Wiley & sons. 2006.
- Denison RF, Kiers ET. Why are most rhizobia beneficial to their plant hosts, rather than parasitic?. *Microbes Infection* 2004;**6**:1235–9.
- Deslippe JR, Egger KN. Molecular diversity of *nifH* genes from bacteria associated with high arctic dwarf shrubs. *Microb Ecol* 2006;**51**:516–25.
- Dixon R, Kahn D. Genetic regulation of biological nitrogen fixation. *Nature Reviews Microbiology* 2004;**2**:621–31
- Dreyfus B, Garcia JL, Gillis M. Characterization of *Azorhizobium caulinodans* gen. nov., sp. nov., a stem-nodulating nitrogen-fixing bacterium isolated from *Sesbania rostrata*. *Int J Syst Evolut Microb* 1988;**38**:89–98.
- Duc L, Neuenschwander S, Rehrauer H et al. Development and experimental validation of a *nifH* oligonucleotide microarray to study diazotrophic communities in a glacier forefield. *Environ Microb*, 2009b;**11**:2179–89.
- Duc L, Noll M, Meier, B. E et al. High diversity of diazotrophs in the forefield of a receding alpine glacier. *Microbial Ecol* 2009a;**57**:179–90.
- Edwards A, Cook S. Microbial dynamics in glacier forefield soils show succession is not just skin deep. *Mol Ecol* 2015;**24**:963–6.
- Fagerli IL, Svenning MM. Arctic and subarctic soil populations of *Rhizobium leguminosarum* biovar *trifolii* nodulating three different clover species: characterisation by diversity at chromosomal and symbiosis loci. *Plant Soil* 2005;**275**:371–81.
- Fierer N, Breitbart M, Nulton J et al. Metagenomic and small-subunit rRNA analyses reveal the genetic diversity of bacteria, archaea, fungi, and viruses in soil. *Appl Environ Microb* 2007;**73**:7059–66.
- Frey B, Bühler L, Schmutz S et al. Molecular characterization of phototrophic microorganisms in the forefield of a receding glacier in the Swiss Alps. *Environ Res Lett* 2013;**8**:015033.
- Frey B, Rieder S.R., Brunner I et al. Weathering-associated bacteria from the Damma glacier forefield: physiological capabilities and impact on granite dissolution. *Applied and environmental Microbiology* 2010;**76**(14):4788–96.
- Guindon S, Gascuel O. A simple, fast and accurate method to estimate large phylogenies by maximum-likelihood. *Syst Biol* 2003;**52**:696–704.
- Gutschick PV. Energy and nitrogen fixation, *BioScience*, 1978;**28**:571–5,
- Handelsman J. Metagenomics: application of genomics to uncultured microorganisms. *Microbiol Mol Biol R* 2004;**68**:669–85.
- Hedges JI, Stern JH. Carbon and nitrogen determinations of carbonate-containing solids. *Limnol Oceanogr* 1984;**29**:657–63.
- He Z, Zhang H, Gao S et al. Evolvview v2: an online visualization and management tool for customized and annotated phylogenetic trees. *Nucleic Acids Res* 2016;**44**:W236–41.
- Hodkinson ID, Coulson SJ, Webb NR. Community assembly along proglacial chronosequences in the high Arctic: vegetation and soil development in north-west Svalbard. *J Ecol* 2003;**91**:651–63.
- Howard JB, Rees DC. Structural basis of biological nitrogen fixation. *Chem Rev* 1996;**96**:2965–82.
- Howe AC, Jansson JK, Malfatti SA et al. Tackling soil diversity with the assembly of large, complex metagenomes. *Proc Natl Acad Sci* 2014;**111**:4904–9.
- Hurek T, Reinhold-Hurek B. Identification of grass-associated and toluene-degrading diazotrophs, *Azoarcus* spp., by analyses of partial 16S ribosomal DNA sequences. *Appl Environ Microb* 1995;**61**:2257–61.
- Huson DH, Beier S, Flade I et al. MEGAN community edition: interactive exploration and analysis of large-scale microbiome sequencing data. *PLoS Comput Biol* 2016;**12**:e1004957.
- Imhoff JF, Pfennig N. *Thioflavococcus mobilis* gen. nov., sp. nov., a novel purple sulfur bacterium with bacteriochlorophyll b. *Int J Syst Evolut Microbiol* 2001;**51**:105–10.
- Irgens RL, Gosink JJ, Staley JT. *Polaromonas vacuolata* gen. nov., sp. nov., a psychrophilic, marine, gas vacuolate bacterium from Antarctica. *Int J Syst Evolut Microbiol* 1996;**46**:822–6.
- Ishii SI, Suzuki S, Tenney A et al. Microbial metabolic networks in a complex electrogenic biofilm recovered from a stimulus-induced metatranscriptomics approach. *Sci Rep* 2015;**5**:14840.
- Inceolu Ö, Hoogwout EF, Hill P et al. Effect of DNA extraction method on the apparent microbial diversity of soil. *Appl Environ Microb* 2010;**76**:3378–82.

- Kaštovská K, Elster J, Stibal M et al. Microbial assemblages in soil microbial succession after glacial retreat in Svalbard (High Arctic). *Microbial Ecol* 2005;**50**:396–407.
- Knelman JE, Legg TM, O'Neill SP et al. Bacterial community structure and function change in association with colonizer plants during early primary succession in a glacier forefield. *Soil Biol Biochem* 2012;**46**:172–80.
- Li H, Durbin R. Fast and accurate short read alignment with Burrows-Wheeler Transform. *Bioinformatics*, 2009;**25**:1754–60.
- Li H. BFC: correcting Illumina sequencing errors. *Bioinformatics* 2015;**31**:2885–87.
- Liu GX, Hu P, Zhang W et al. Variations in soil culturable bacteria communities and biochemical characteristics in the Dongkemadi glacier forefield along a chronosequence. *Folia Microbiol* 2012;**57**:485–94.
- Liu K, Warnow TJ, Holder MT et al. SATe-II: very fast and accurate simultaneous estimation of multiple sequence alignments and phylogenetic trees. *Syst Biol* 2011;**61**:90–106.
- Lovley DR, Giovannoni SJ, White DC et al. *Geobacter metallireducens* gen. nov. sp. nov., a microorganism capable of coupling the complete oxidation of organic compounds to the reduction of iron and other metals. *Arch Microbiol* 1993;**159**:336–44.
- Maddison WP, Maddison DR. *Mesquite: a modular system for evolutionary analysis*. Version 3.2 2017. <http://mesquiteproject.org> [Accessed 08-10-17].
- Menge DN, Hedin LO. Nitrogen fixation in different biogeochemical niches along a 120 000-year chronosequence in New Zealand. *Ecology* 2009;**90**:2190–201.
- Methe BA, Nelson KE, Eisen JA et al. Genome of *Geobacter sulfurreducens*: metal reduction in subsurface environments. *Science* 2003;**302**:1967–9.
- Meyer F, Paarmann D, D'Souza M et al. The metagenomics RAST server—a public resource for the automatic phylogenetic and functional analysis of metagenomes. *BMC Bioinformatics* 2008;**9**:386.
- Miniaci C, Bunge M, Duc L et al. Effects of pioneering plants on microbial structures and functions in a glacier forefield. *Biol Fertility Soils* 2007;**44**:289–97.
- Mylona P, Pawlowski K, Bisseling T. Symbiotic nitrogen fixation. *Plant Cell* 1995;**7**:869.
- Nicol GW, Tschirko D, Embley TM et al. Primary succession of soil Crenarchaeota across a receding glacier foreland. *Environ Microbiol* 2005;**7**:337–47.
- Oda Y, Samanta SK, Rey FE et al. Functional genomic analysis of three nitrogenase isozymes in the photosynthetic bacterium *Rhodospseudomonas palustris*. *J Bacteriol* 2005;**187**:7784–94.
- Pattanaik B, Schumann R, Karsten U. Effects of ultraviolet radiation on cyanobacteria and their protective mechanisms. *Algae Cyanobacteria Extreme Environ* 2007;**11**:29–45.
- Peduzzi S, Welsh A, Demarta A et al. *Thiocystis chemoclinalis* sp. nov. and *Thiocystis cadagnonensis* sp. nov., motile purple sulfur bacteria isolated from the chemocline of a meromictic lake. *Int J Syst Evol Microbiol* 2011;**61**:1682–7.
- Prakash T, Taylor TD. Functional assignment of metagenomic data: challenges and applications. *Briefings Bioinform* 2012;**13**:711–27.
- Prietzl J, Wu Y, Dümig A et al. Soil sulphur speciation in two glacier forefield soil chronosequences assessed by SK-edge XANES spectroscopy. *Eur J Soil Sci* 2013;**64**:260–72.
- Raymond J, Siefert JL, Staples CR et al. The natural history of nitrogen fixation. *Mol Biol Evol* 2004;**21**:541–54.
- Rime T, Hartmann M, Brunner I. Vertical distribution of the soil microbiota along a successional gradient in a glacier forefield. *Mol Ecol*, 2015;**24**:1091–108.
- Rodriguez-r LM, Konstantinidis KT. Estimating coverage in metagenomic data sets and why it matters. *ISME J* 2014;**8**:2349.
- Rognes T, Flouri T, Nichols B et al. VSEARCH: a versatile open source tool for metagenomics. *Peer J* 2016;**4**:e2584.
- Sanford RA, Cole JR, Tiedje JM. Characterization and description of *Anaeromyxobacter dehalogenans* gen. nov., sp. nov., an aryl-halo-respiring facultative anaerobic myxobacterium. *Appl Environ Microb* 2002;**68**:893–900.
- Sattin SR, Cleveland CC, Hood E et al. Functional shifts in unvegetated, perhumid, recently-deglaciated soils do not correlate with shifts in soil bacterial community composition. *J Microbiol* 2009;**47**:673–81.
- Schink B, Stieb M. Fermentative degradation of polyethylene glycol by a strictly anaerobic, gram-negative, nonsporeforming bacterium, *Pelobacter venetianus* sp. nov. *Appl Environ Microb* 1983;**45**:1905–13.
- Schink B. The genus *Pelobacter*. In: Dworkin M, Falkow S, Rosenberg E et al. (eds). *The Prokaryotes: Volume 7: Proteobacteria: Delta, Epsilon Subclass*. New York: Springer, 2006;5–11.
- Schmalenberger A, Noll M. Shifts in desulfonating bacterial communities along a soil chronosequence in the forefield of a receding glacier. *FEMS Microbiol Ecol*, 2009;**71**:208–17.
- Schmidt SK, Reed SC, Nemergut DR et al. The earliest stages of ecosystem succession in high-elevation (5000 metres above sea level), recently deglaciated soils. *Proc Royal Soc Lond B: Biol Sci* 2008;**275**:2793–802.
- Schulz S, Brankatschk R, Dümig A et al. The role of microorganisms at different stages of ecosystem development for soil formation. *Biogeosciences* 2013;**10**:3983–96.
- Schwintzer CR. *The Biology of Frankia and Actinorhizal Plants*. Netherlands: Elsevier, 2012.
- Schütte UM, Abdo Z, Foster J et al. Bacterial diversity in a glacier foreland of the high Arctic. *Mol Ecol* 2010;**19**:54–66.
- Shelobolina ES, Vrionis HA, Findlay RH et al. *Geobacter uraniireducens* sp. nov., isolated from subsurface sediment undergoing uranium bioremediation. *Int J Syst Evol Microb* 2008;**58**:1075–8.
- Stamatakis A. RAxML version 8: a tool for phylogenetic analysis and post-analysis of large phylogenies. *Bioinformatics* 2014;**30**:1312–13.
- Tamaru Y, Takani Y, Yoshida T et al. Crucial role of extracellular polysaccharides in desiccation and freezing tolerance in the terrestrial cyanobacterium *Nostoc commune*. *Appl Environ Microb* 2005;**71**:7327–33.
- Teixeira RLF, Von Der Weid I, Seldin L et al. Differential expression of *nifH* and *anfH* genes in *Paenibacillus durus* analysed by reverse transcriptase-PCR and denaturing gradient gel electrophoresis. *Lett Appl Microbiol* 2008;**46**:344–9.
- Telling J, Anesio AM, Tranter M et al. Nitrogen fixation on Arctic glaciers, Svalbard. *J Geophys Res: Biogeosci* 2011;**116**:1–8.
- Thomas T, Gilbert J, Meyer F. Metagenomics—a guide from sampling to data analysis. *Microb Inform Exp* 2012;**2**:1–12.
- Torsvik V, Øvreås L, Thingstad TF. Prokaryotic diversity—magnitude, dynamics, and controlling factors. *Science* 2002;**296**:1064–6.
- Tranter M, Skidmore M, Wadham J. Hydrological controls on microbial communities in subglacial environments. *Hydrological Processes* 2005;**19**(4):995–8.

- Vishnivetskaya TA, Layton AC, Lau MC et al. Commercial DNA extraction kits impact observed microbial community composition in permafrost samples. *FEMS Microbiol Ecol* 2014;**87**:217–30.
- Vos M, Quince C, Pijl AS et al. A comparison of rpoB and 16S rRNA as markers in pyrosequencing studies of bacterial diversity. *PLoS One* 2012;**7**:e30600.
- Vázquez-Castellanos JF, García-López R, Pérez-Brocal V et al. Comparison of different assembly and annotation tools on analysis of simulated viral metagenomic communities in the gut. *BMC Genomics* 2014;**15**:37.
- Wall LG. The actinorhizal symbiosis. *J Plant Growth Regulat* 2000;**19**:167–82.
- Wooley JC, Godzik A, Friedberg I. A primer on metagenomics. *PLoS Comput Biol* 2010;**6**:e1000667.
- Zehr JP, Jenkins BD, Short SM et al. Nitrogenase gene diversity and microbial community structure: a cross-system comparison. *Environ Microbiol* 2003;**5**:539–54.
- Zumsteg A, Bååth E, Stierli B et al. Bacterial and fungal community responses to reciprocal soil transfer along a temperature and soil moisture gradient in a glacier forefield. *Soil Biol Biochem* 2013;**61**:121–32.
- Zumsteg A, Luster J, Göransson H et al. Bacterial, archaeal and fungal succession in the forefield of a receding glacier. *Microb Ecol* 2012;**63**:552–64.