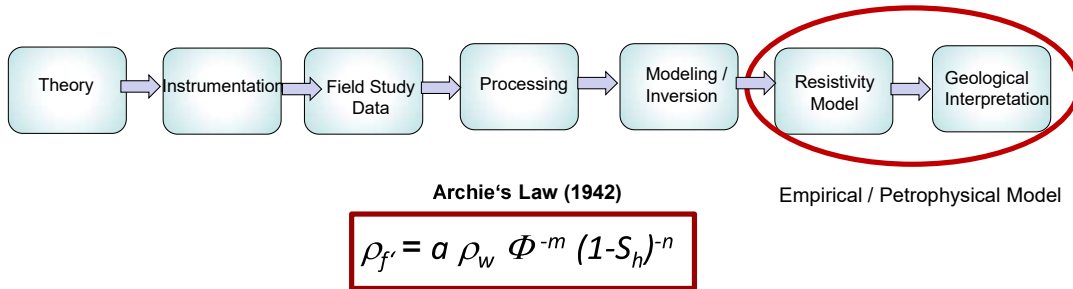


Archie's Law - Boon or Bane? An approach to estimate gas hydrate saturations

Katrin Schwalenberg (BGR) & Romina Gehrmann (University of Southampton)



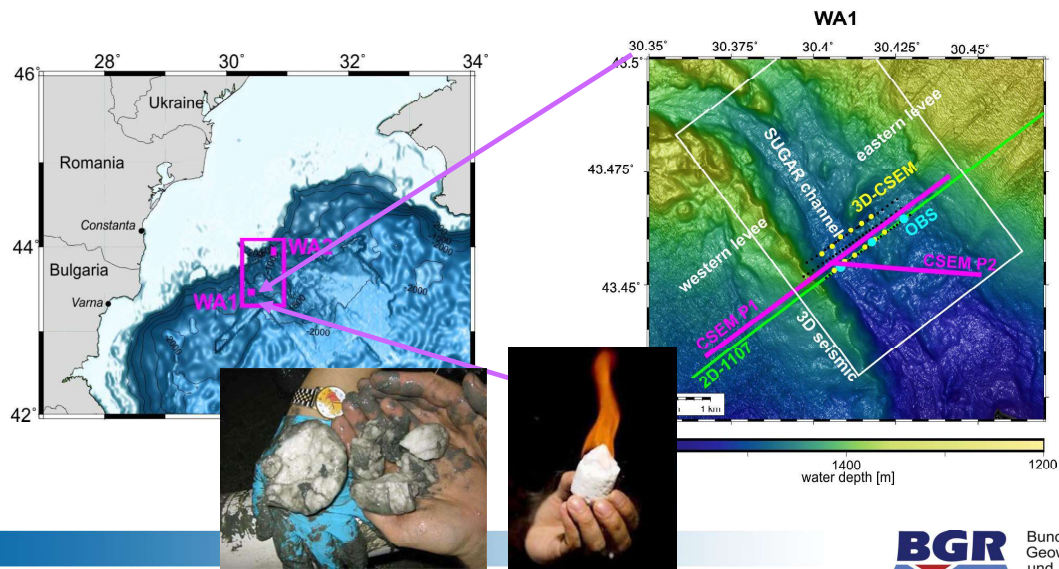
The Boon: A practical tool to relate resistivity to porosity, salinity, saturation estimates

The Bane: Often used standard coefficients may lead to over- / underestimated saturation estimates

EMTF 2019 Haltern, K. Schwalenberg, Archie's Law



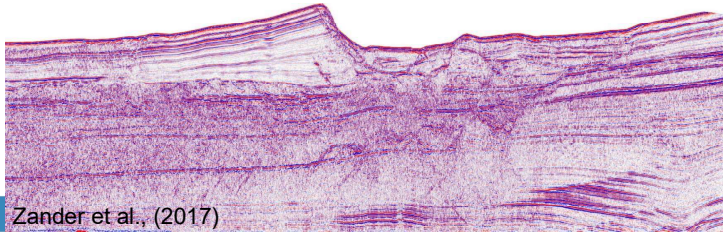
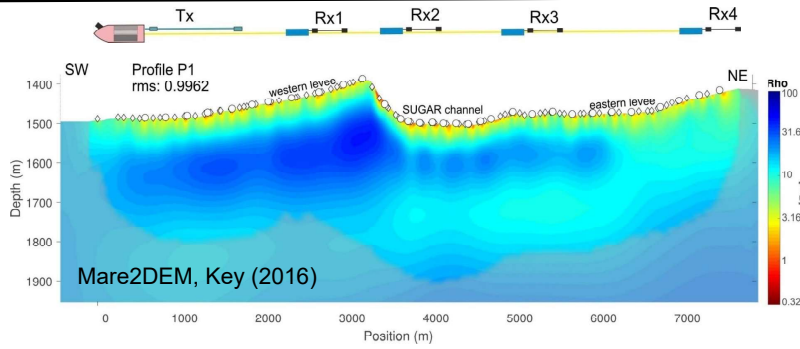
Daube Delta, Western Black Sea



EMTF 2019 Haltern, K. Schwalenberg



Resistivity model, Gas Hydrates, Black Sea



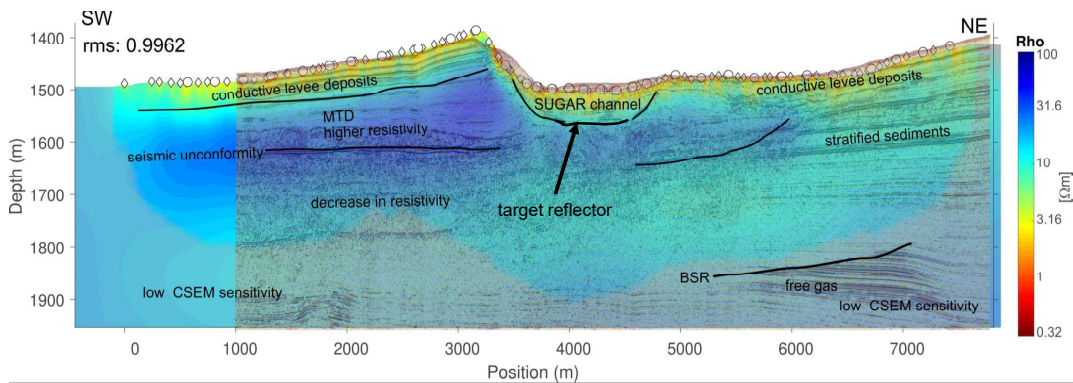
Zander et al., (2017)



EMTF 2019 Haltern, K. Schwalenberg

Resistivity Model, Gas Hydrates, Black Sea

what is the gas hydrate saturation?



EMTF 2019 Haltern, K. Schwalenberg



Archie's Law, parameters

$$\rho_f = a \rho_w \Phi^{-m}$$

ρ_f = formation resistivity
 a = constant, tortuosity factor

$$\rho_{f'} = a \rho_w \Phi^{-m} (1-S_h)^{-n}$$

ρ_w = pore water resistivity
 Φ = porosity
 m = cementation factor

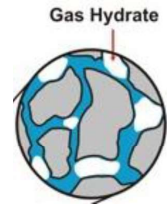
$$\rho_{f'} = \rho_f (1-S_h)^{-n}$$

S_h = gas hydrate saturation
 n = saturation exponent
 ρ_f / ρ_w = formation factor

$$\frac{1}{R} = \frac{\phi^m}{a R_w (1 - V_{cl})} S_w^n + \frac{V_{cl}}{R_{cl}} S_w^{n-1}$$

R_{cl} = clay resistivity
 V_{cl} = clay volume fraction

Simandoux, 1963, Lee & Collett, 2006

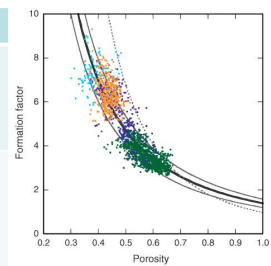


EMTF 2019 Haltern, K. Schwalenberg



Archie coefficients :

Parameter	Typical Range / Description	Source / Reference	Notes
a	1 for $\Phi = 100\%$ $\neq 1$ Intercept of the $\log \rho / \log \Phi$ at $\Phi = 100\%$	Winsauer 1952	Better fit
m	1.8 - 2.0 unconsolidated sands 1.4 - 1.9 sand to shell 2.0 - 2.3 clean sands 1.8 - 3.0 compacted sandstone 1.945	Archie, 1942 Jackson et al, 1978 Salem & Chilingariam, 1999 Riedel et al., 2019	Depends on shape rather than grain size and sorting; Varies with clay content
n	~ 2 1.9386 0.5 - 4 2.5 +/- 0.5	Archie, 1942 Pearson et al, 1983 Spangenberg 2001 Cook & Waite, 2018	Depends on m, Φ , grain size and distribution, saturation



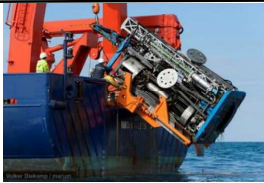
m: slope
 a: intercept at $\Phi = 100\%$

a = 1, m = 2, n = 2 are often used standard Archie coefficients

EMTF 2019 Haltern, K. Schwalenberg

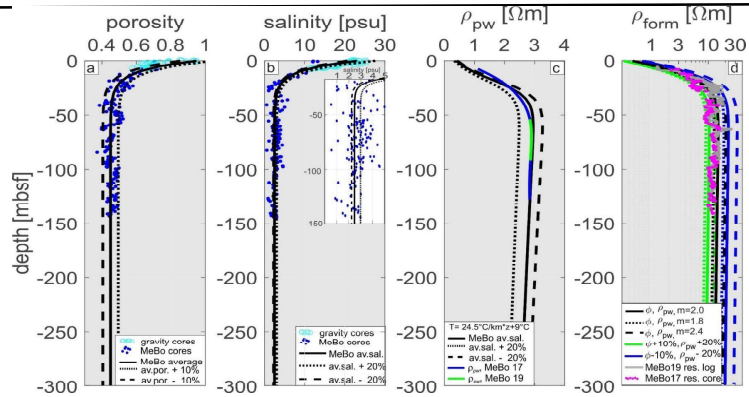


MeBo Drilling:



$$\rho_f = a \rho_w \Phi^{-m}$$

a = 0,988, m = 1,945
Riedel et al., 2019

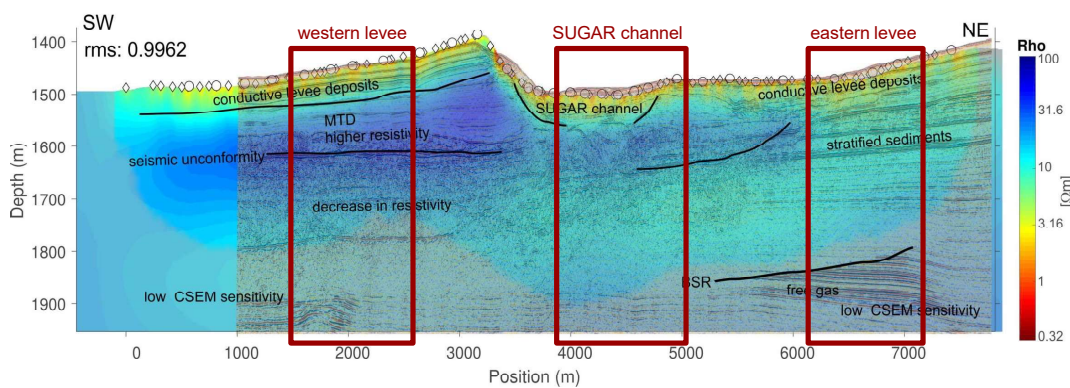


- **porosity decrease** from ~70% at seafloor to ~45% below 30m
- **salinity decrease** from 22 psu at seafloor to 2.5 (4.0, Popescu et al., 2006) psu below 30m
- **pore water resistivity increase** to 2.86 Ωm (2.5 psu) below 30m (Fofonoff, 1983)
- **MeBo res. log** is within the range of derived background resistivities

EMTF 2019 Haltern, K. Schwalenberg



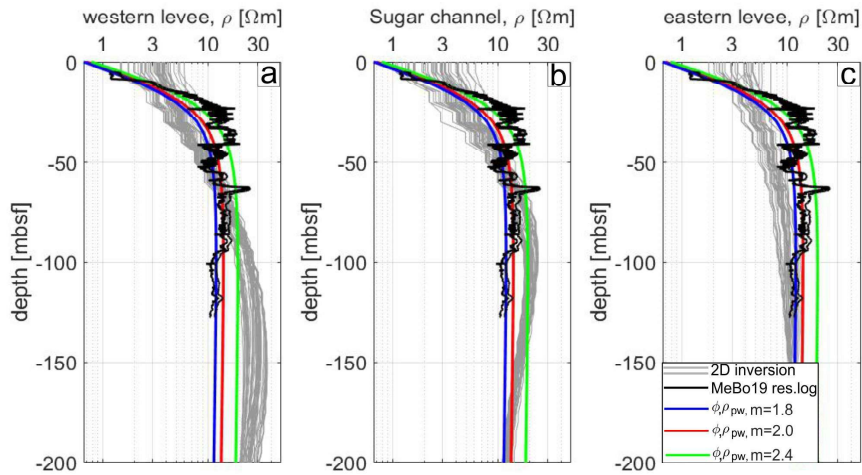
Model selection:



EMTF 2019 Haltern, K. Schwalenberg

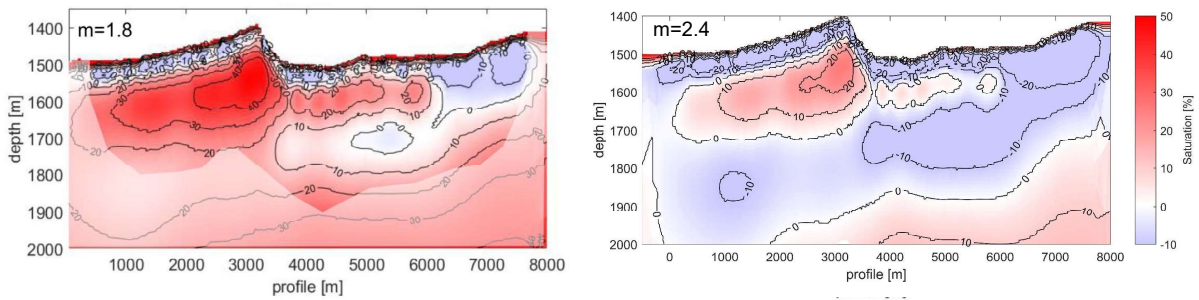


MeBo resistivity compared to inverted resistivity:



EMTF 2019 Haltern, K. Schwalenberg

Saturation Models



- Average porosity: 75 % \rightarrow 45% below 40 m
- Average pore water resistivity: 0.4 Ω m \rightarrow 2.86 Ω m below 40 m
- $a=1$, $n=2.5$

Does the same set of Archie coefficients hold for the entire model?

EMTF 2019 Haltern, K. Schwalenberg

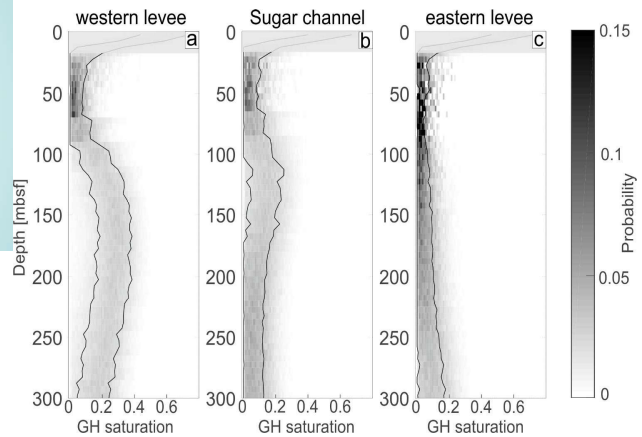
Stochastic Approach, 1D

Input parameter ranges:

- Log ρ ranges (Gaussian)
 - Average porosity +/- 20% (Gaussian)
 - Average pore water resistivity, salinity +/- 10% (uniform)
 - $a = [0.9 \ 1.1]$; $m = [1.8 \ 2.5]$; $n = [2.0 \ 2.5]$ (uniform)
- 5000 realizations of Archie's Law
 → sorting (rms < 1), GH binning [0 1]

$$S_h = 1 - \left[a \rho_w \phi^{-m} / \rho_f \right]^{1/n}$$

After Sava and Hardage, 2007

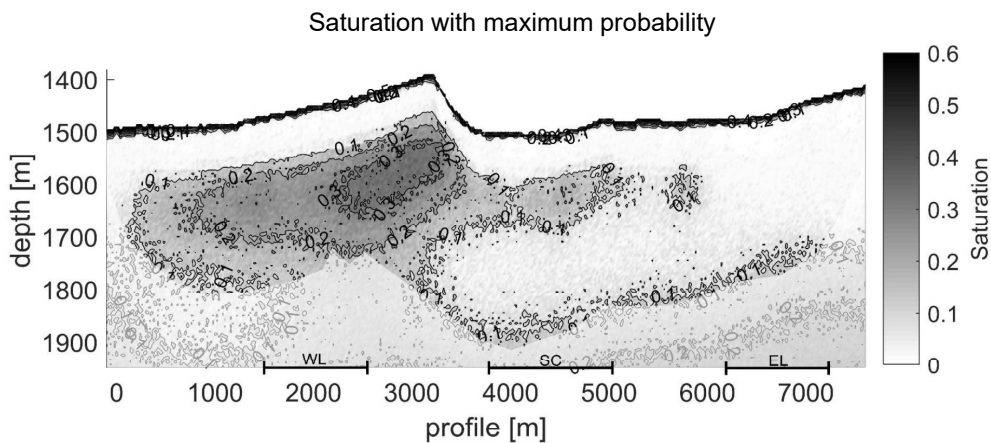


68% confidence intervals

EMTF 2019 Haltern, K. Schwalenberg



Stochastic Approach, 2D



Schwalenberg et al., soon submitted to *SI MarPotGeo*

EMTF 2019 Haltern, K. Schwalenberg



Conclusions

Archie's Law (1942)

$$\rho_{fr} = a \rho_w \Phi^{-m} (1-S_h)^{-n}$$

- **The Boon:** A practical tool to relate resistivity to porosity, salinity, saturation estimates
- **The Bane:** Often used standard coefficients may lead to over- / underestimated saturation estimates
- The stochastic approach can help to define saturation ranges based on probability and credibility intervals

EMTF 2019 Haltern, K. Schwalenberg

BGR Bundesanstalt für
Geowissenschaften
und Rohstoffe
GEOZENTRUM HANNOVER

Acknowledgements

- The SUGAR project which was jointly funded by the German Federal Ministry of Education and Research (BMBF) and the German Federal Ministry of Economic Affairs and Energy (BMWi) (grants 03G0688A, 03SX320Z).
- We acknowledge the captain and crew of R/V Maria S. MERIAN voyage MSM 35 for their excellent support to collect the CSEM data. The German Science Foundation (DFG) provided the ship time on R/V MARIA S MERIAN.
- The MeBo drilling data used in this study were kindly provided by Michael Riedel und Matthias Haeckel.
- We thank Kerry Key for making MARE2DEM available to the community.

EMTF 2019 Haltern, K. Schwalenberg

BGR Bundesanstalt für
Geowissenschaften
und Rohstoffe
GEOZENTRUM HANNOVER